

7. **WEST**

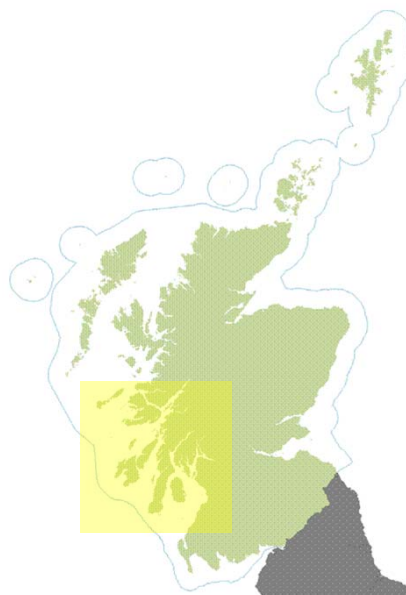
The West Region includes two Plan Options and four Scoping Area Search.

The Plan Options are:

- Argyll Array; and
- Islay.

The Scoping Areas of Search are:

- W1-3 (Argyll);
- W4 (Kintyre);
- W5 (Kintrye);
- W6 (Kintyre); and
- W7 (Argyll).



This Region represented by two maps, Argyll and Kintyre in order to increase the visual detail.

7.1 **Resource**

7.1.1 There are already two agreements for lease in this sector. Both are at least partially included in area of search W1-3. This is the largest area of search (4,406 Km²) identified during the offshore wind scoping study and provides a plentiful wind resource given its exposure.

7.1.2 Figure 1.2 shows the location of the areas of search and the agreed leases.

7.1.3 Wind resource in area W1-W3 is good with maximum mean annual wind power of 1.4 kWm⁻² and an annual mean wind speed of 10 ms⁻¹. In summer the wind power is 0.7 kWm⁻² and the wind speed 8.8 ms⁻¹ which increases to 2.4 kWm⁻² in winter with top mean speeds of 13.3 ms⁻¹.

7.1.4 Area of search W5 to the south could potentially harvest mean wind power of 1 kWm⁻² from mean annual wind speeds of 9 ms⁻¹. Summer and winter resource varies from 0.4 kWm⁻² and 7 ms⁻¹ wind speed to 1.7 kWm⁻² and 11.8 ms⁻¹

Figure 7.1 Argyll Wind Energy Resource (Areas of Search)(Annual Mean Power)

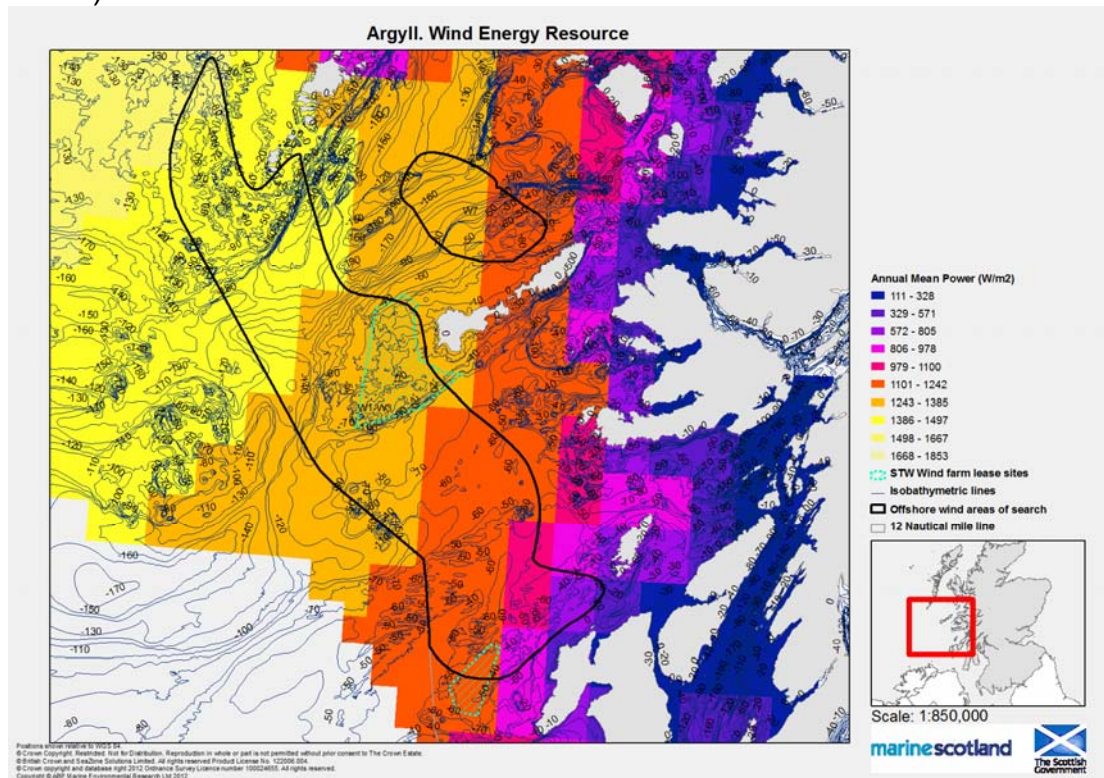


Figure 7.2 Argyll Wind Energy Resource (Areas of Search)(Annual Mean Wind Speed)

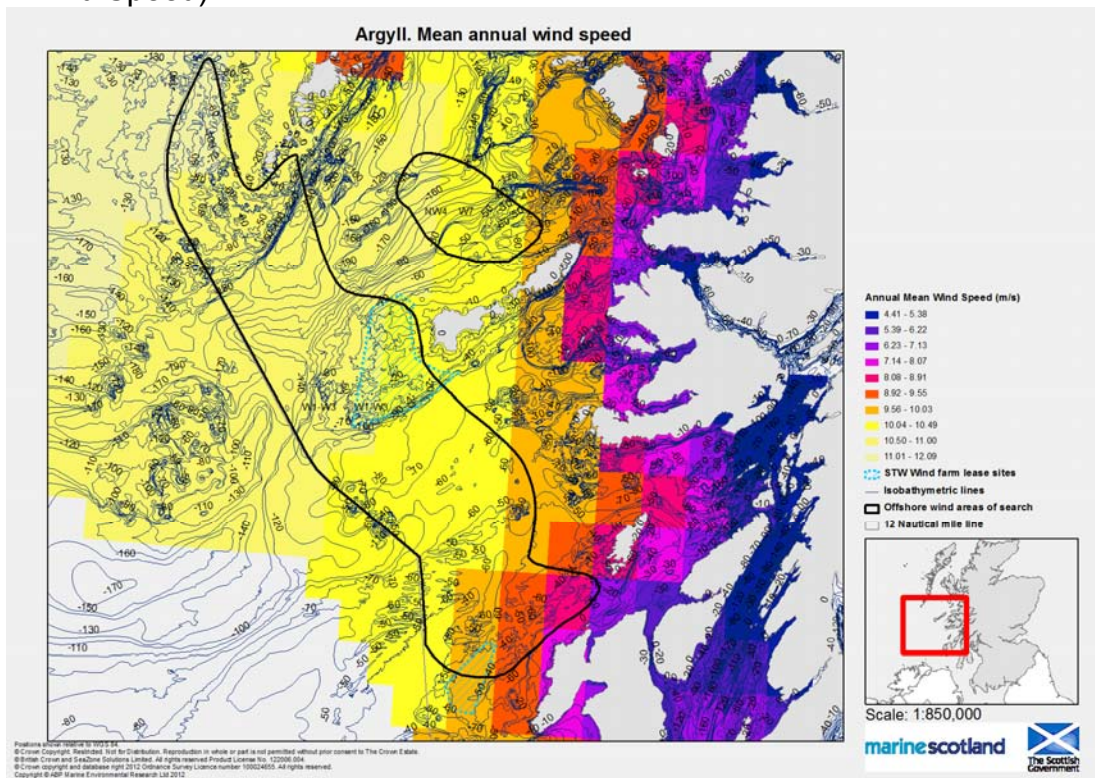


Figure 7.3 Kintyre Wind Energy Resource (Annual Mean Power)

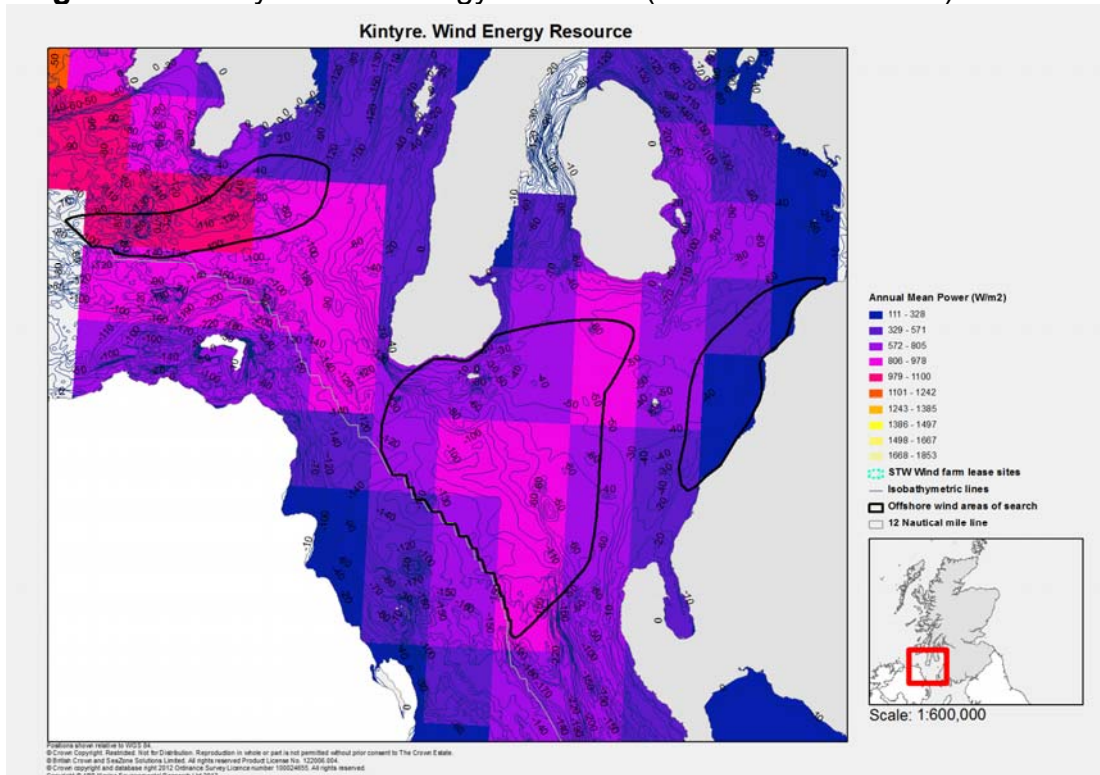
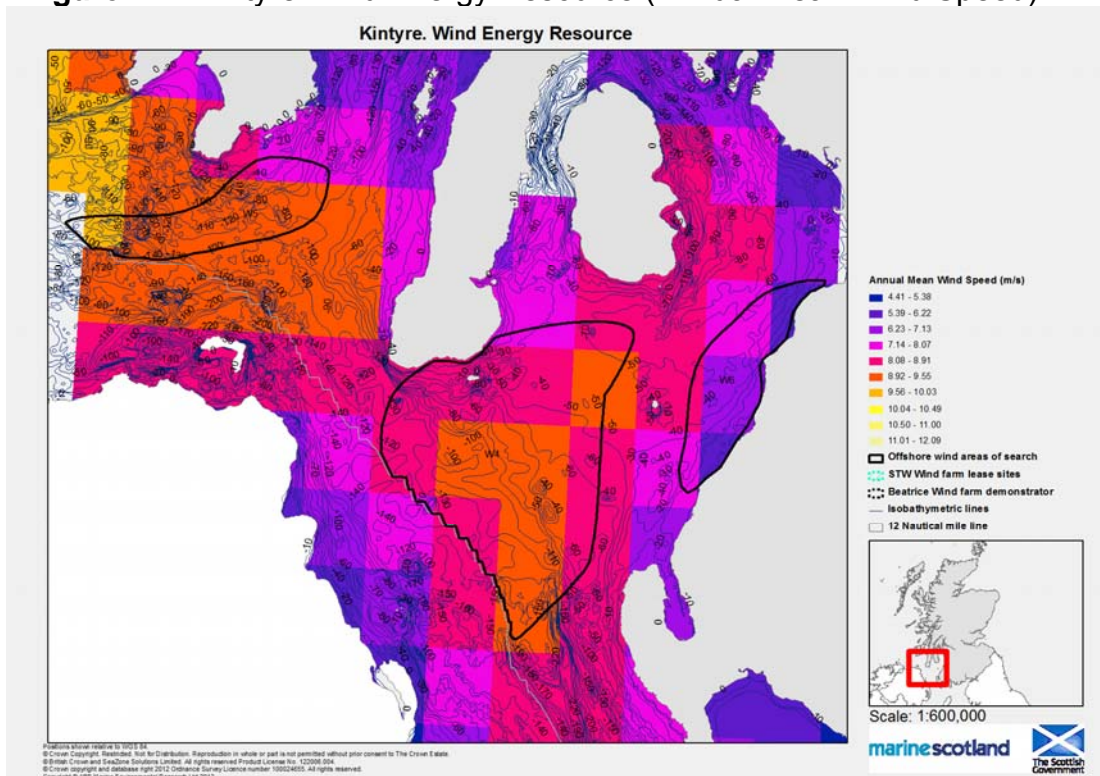


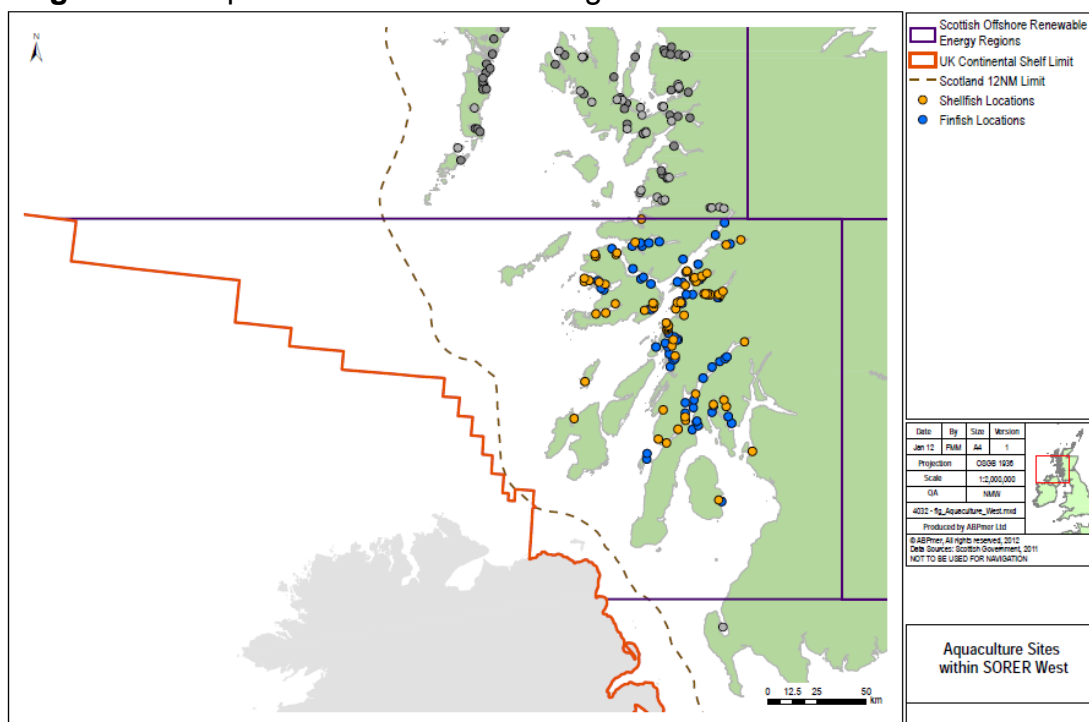
Figure 7.4 Kintyre Wind Energy Resource (Annual Mean Wind Speed)



7.2 Aquaculture

- 7.2.1 Marine aquaculture sites within the West Region are shown in Figure 7.5. There are 67 finfish and 72 shellfish sites. The figure reveals that aquaculture sites are widespread along the coastline within this region, with particular concentrations in Loch Fyne, the Firth of Lorn and around the Isle of Mull.

Figure 7.5 Aquaculture in the West Region



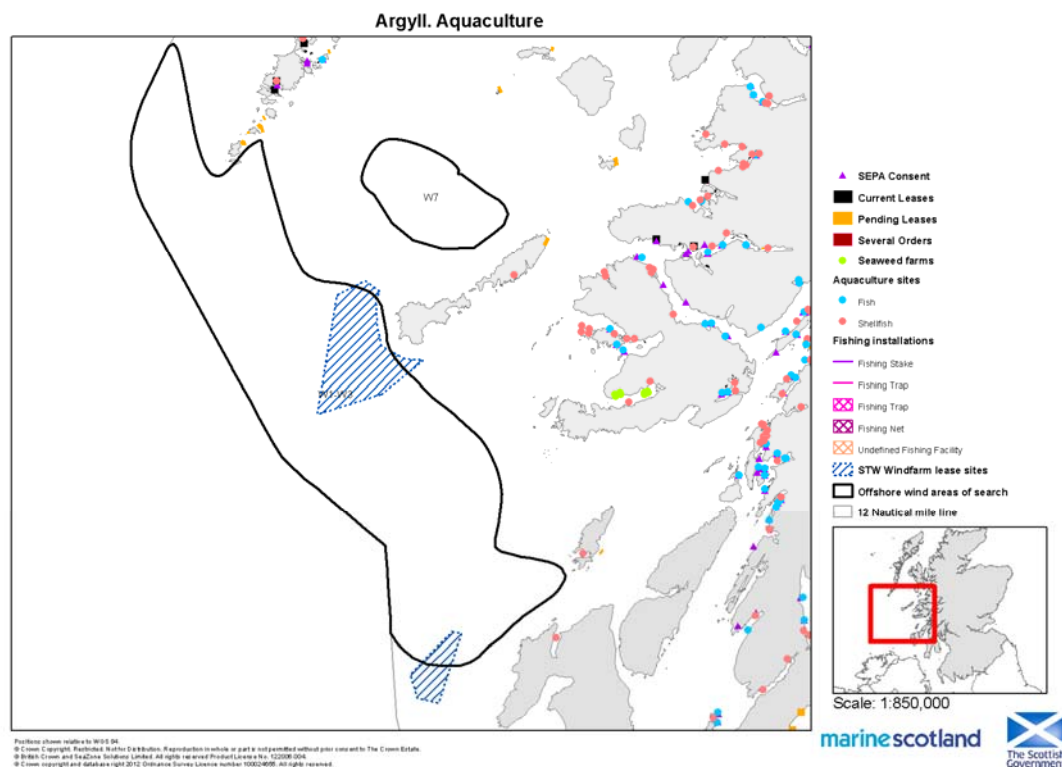
- 7.2.2 In 2010, there were 230 full-time and 39 part-time employees in the Marine Aquaculture industry in the West Region of Scotland.

Argyll

- 7.2.3 There are no aquaculture facilities within the areas of potential development. The surrounding area contains numerous finfish and shellfish aquaculture sites. In addition there are a number of potential applications for developments around the small isles (Rum and Eigg). The area straddles the South West, Strathclyde, North West, Highland and Western Isles regions.
- 7.2.4 The South West region is responsible for the production of 18% of Atlantic salmon, 100% of marine rainbow trout and 100% of halibut. The **Strathclyde Region** (most relevant to the West SORER) responsible for 11% of mussels for the table, 1% of mussels for on-growing, 84% of Pacific oysters for the table, 3% of Pacific oysters for on-growing, 100% of native oysters for the table and on-growing and 93% of queen scallops for the table. The North West region is responsible for 31% of Atlantic salmon production. The Highland region is responsible for 10% of mussels for the table, 27% of mussels for on-growing, 15% of Pacific oysters for the table, 97% of Pacific

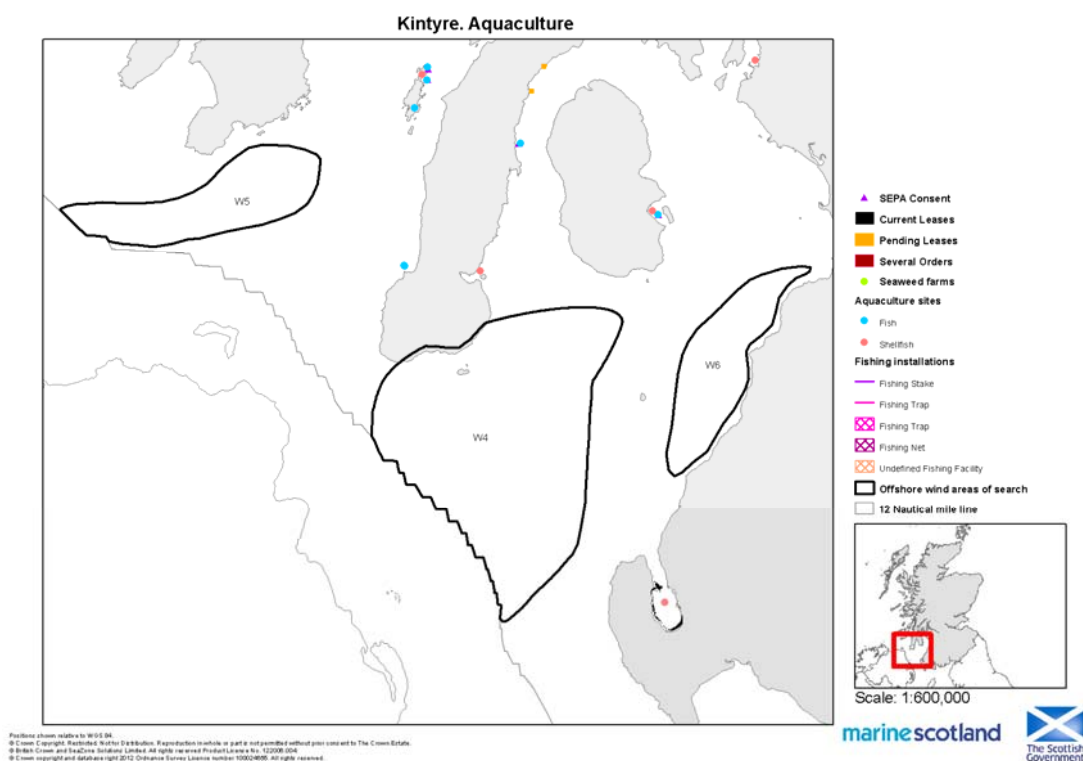
oysters for on-growing, 7% of queen scallops for the table and 100% of scallops for table and on-growing. The Western Isles region is responsible for 16% of Atlantic salmon production, 14% of mussels for the table, 9% of mussels for on-growing, and 0.5% of Pacific oysters for the table.

Figure 7.6 Aquaculture activities in Argyll (Areas of Search)



Kintyre

7.2.5 There are no aquaculture facilities within the areas of potential development. There are numerous finfish and shellfish aquaculture sites within the surrounding area. The area falls within the South West and Strathclyde regions responsible for the following production 18% of Atlantic salmon, 100% of marine rainbow trout, 100% of halibut, 11% of mussels for the table, 1% of mussels for on-growing, 84% of Pacific oysters for the table, 3% of Pacific oysters for on-growing, 100% of native oysters for the table and on-growing and 93% of queen scallops for the table.

Figure 7.7 Aquaculture activities in the Kintyre (Areas of Search)

7.3 Aviation

7.3.1 Airports in this region include the major airports Glasgow and Glasgow Prestwick. In addition, there are minor airports at Campbeltown and on Coll, Colonsay, Tiree and Islay.

7.3.2 The principal airport on the West coast is Glasgow International that operates an extensive range of domestic flights as well as international flights to a wide range of European destinations with some long haul flights, in particular to the American Eastern seaboard and Caribbean (ABPmer, RPA and SQW, 2011). Glasgow Prestwick airport international traffic is limited to European destinations and is Scotland's most significant scheduled freight airport (Glasgow Prestwick Airport, 2008). The Highlands and Islands Airports Ltd. (HIAL) Campbeltown airport offers a twice daily scheduled service to Glasgow airport.

7.3.3 NATS provides air traffic control services to aircraft flying in UK airspace, and over the Eastern part of the North Atlantic from two locations, one of which is Prestwick in Ayrshire (SSE Renewables, 2010).

7.3.4 Tiree Airport is not serviced by on-site Air Traffic Control. The airspace above Tiree Airport is classified as 'uncontrolled airspace' (ScottishPower Renewables, 2010). The airspace around this airport is divided into airport avoidance surfaces with associated maximum height restrictions (Anderson, 2005 cited in ScottishPower Renewables, 2010). The NATS En Route (NERL) Tiree Radar Site is located on Ben Hynish. The site is used to control the airspace in the East Atlantic (ScottishPower Renewables, 2010).

Campbeltown does not have a civilian radar system (Anne Phillips, HIAL, pers.com. cited in ABPmer, RPA and SQW).

7.3.5 Figures 7.8 and 7.9 identifies the potential interactions between Areas of Search W1-3 and aviation activities in the North West Region.

Figure 7.8 Aviation activities in Argyll (Areas of Search)

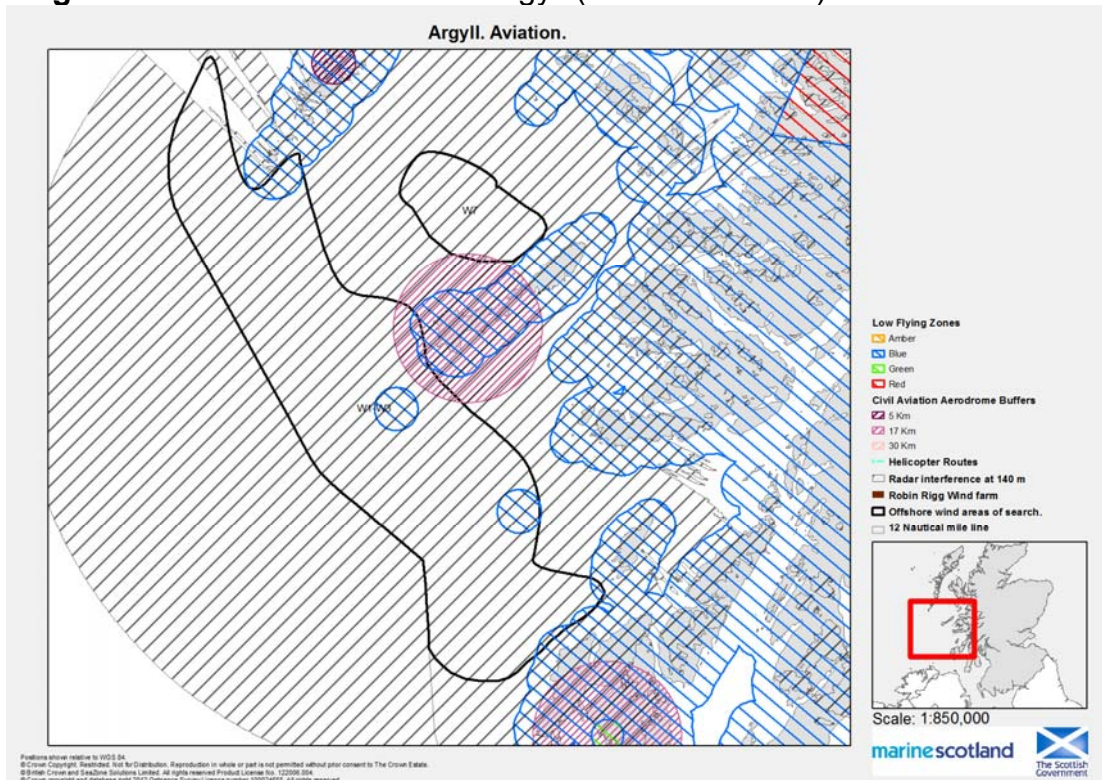
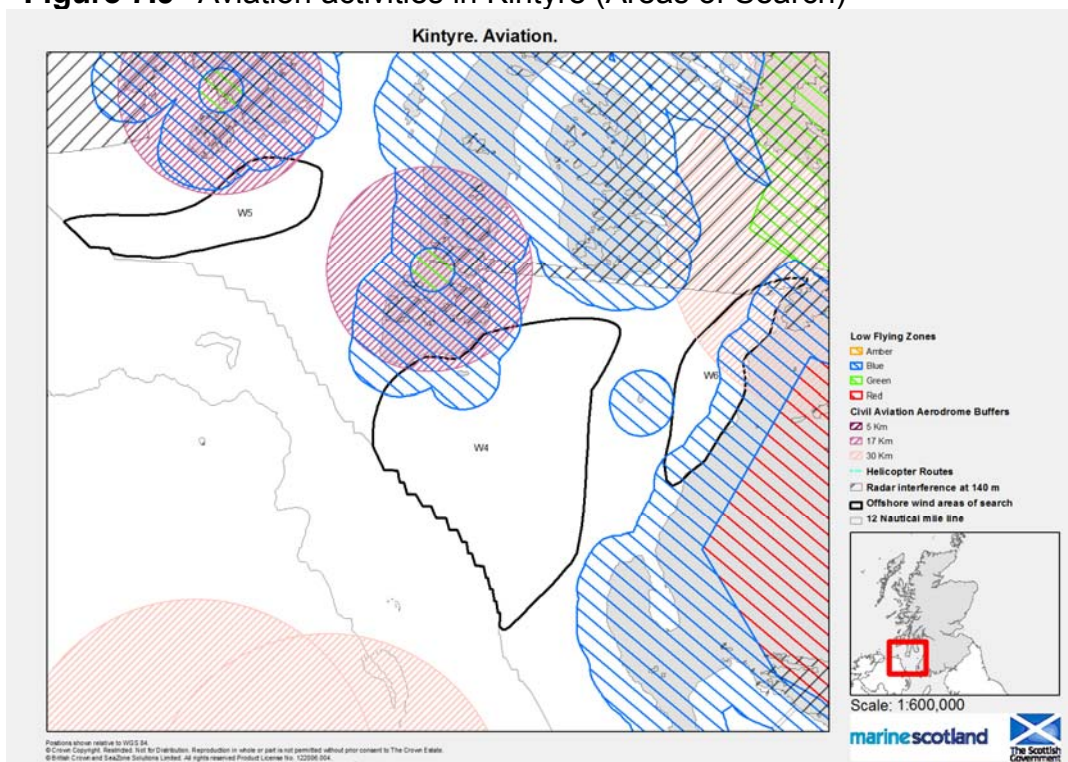


Figure 7.9 Aviation activities in Kintyre (Areas of Search)

7.4 Bathymetry and Seabed

- 7.4.1 Depths around the areas of search in this section range from 20 m to 260 m with a mean of 80 m. Area of search W1-3 contains both the shallowest point, a sandbank that rises to 10 m at around 14 nm southwest of Mull, and the deepest point at the southern tip of the trench between Barra and Tiree (see Figure 7.10).
- 7.4.2 This search area lies mostly on sandy sediment with some muddy sand in the deeper parts towards the North. In the shallower areas at the southern tip of Barra there is some rocky substrate as well as some gravelly sand. On the southern tip the sandy substrate gives way to coarser gravelly sand and sandy gravel in the shallower waters north of Islay. The EUNIS data (Figure 7.11) shows rock at the north and central part of the area of search, mud in the deep trench and sand and muddy sand towards the south.
- 7.4.3 Directly north of the Isle of Tiree within area of search W7 the depth varies between 40 to 170 m. This area contains relatively steep gradient slopes. Muddy sediments dominate in the deeper areas with muddy sand giving way to sandy mud in a northwesterly direction, with sandy sediments prevalent at the shallower south easterly part of the search area. The habitat is also described as muddy for all of the deeper parts of the area of search with some rocky outcrops and fine and muddy sands found at the shallower end at the south east.

Figure 7.10 Argyll (Area of Search) Seabed Sediments

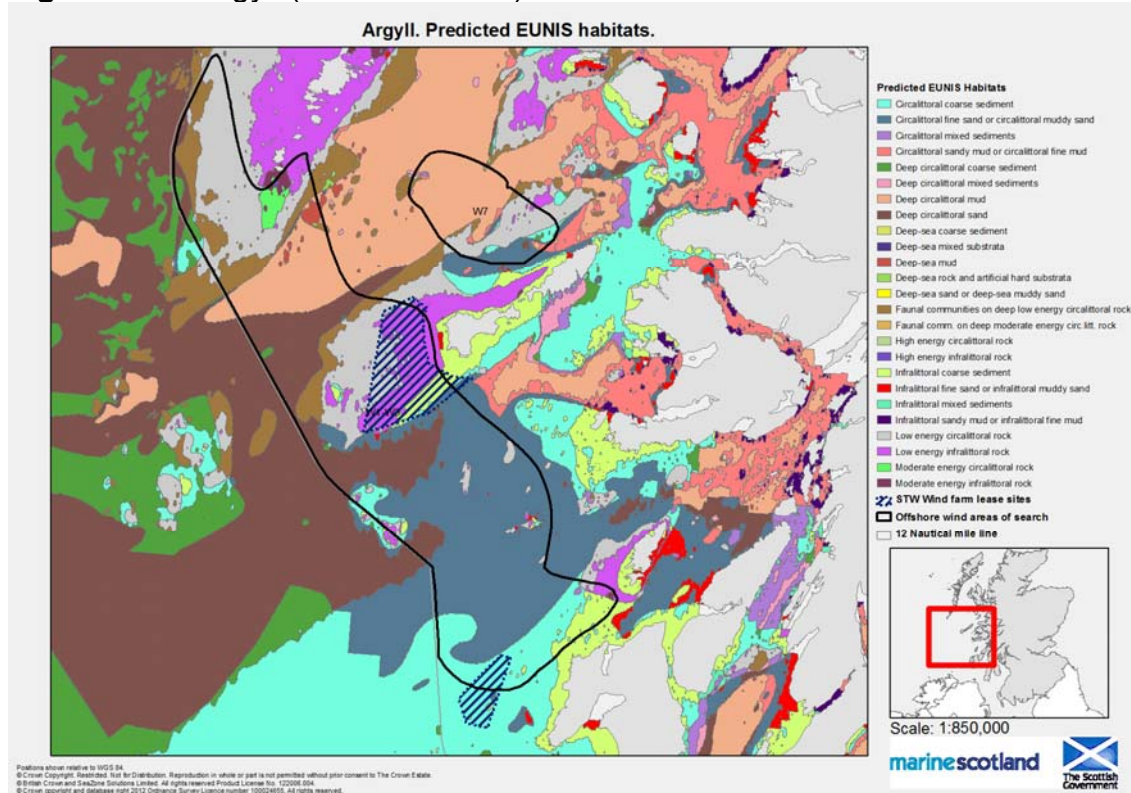
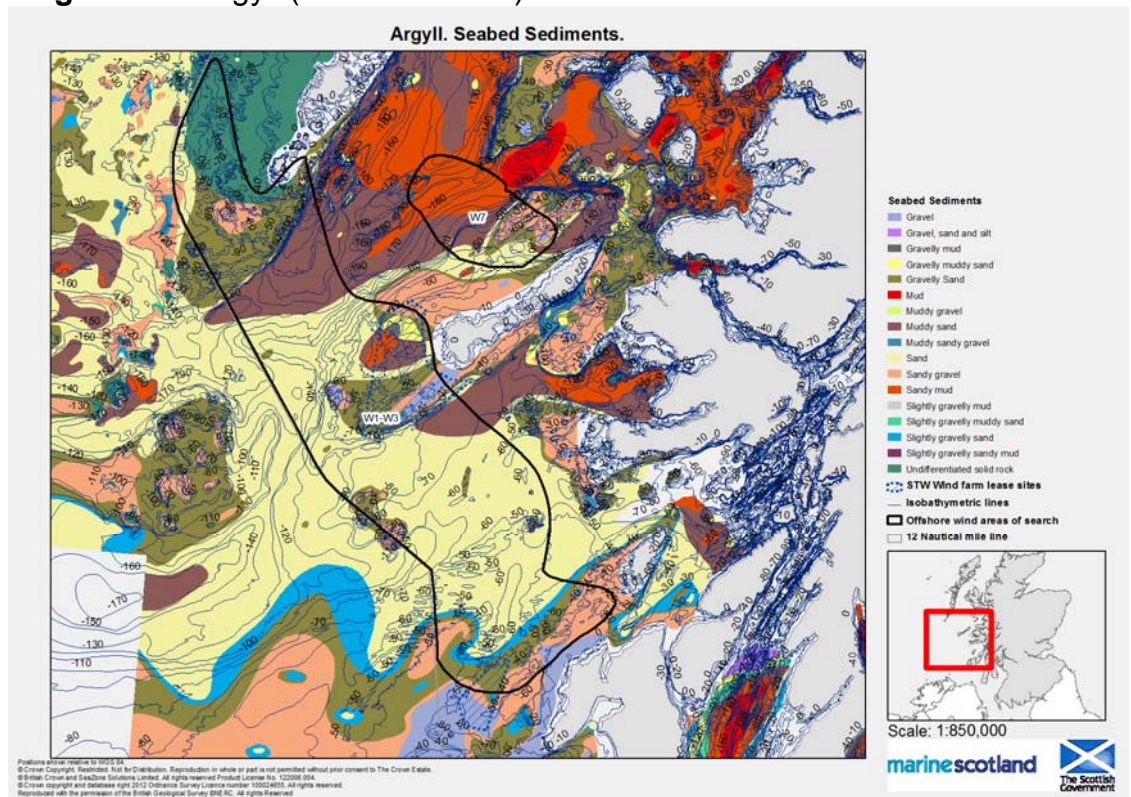


Figure 7.11 Argyll (Area of Search) Seabed Predicted EUNIS Habitats



7.4.4 Area W5 shows increasingly gravelly sand running in an east to west direction and is at its deepest in its mid section. The habitats identified are

mostly deep circalittoral coarse sediment with sand and muddy sand habitats at the eastern shallower end.

7.4.5 Area W4 displays some gravel patches directly south of the Kintyre peninsula's shore. Depths increase after two miles offshore from 40 to 80 m with a maximum depth of 130 m at the north western side. The middle of this area shows a sandy bottom with more gravelly substrate radiating out from it. The eastern part is mostly composed of mud and sandy mud at depths of 50-60 m. The EUNIS habitats describe this area in much the same way with a central sandy habitat, coarser sediment to the south and northwest and mud and muddy sand to the north east.

Figure 7.12 Kintyre (Areas of Search) Seabed Sediments

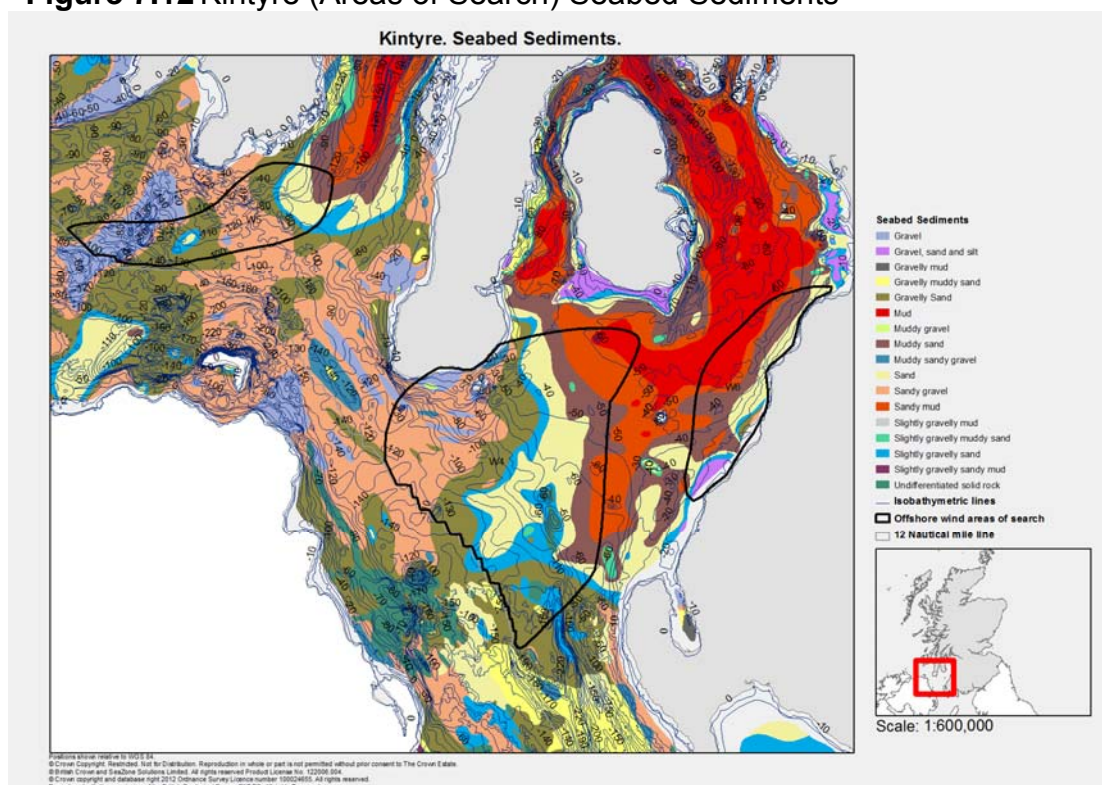
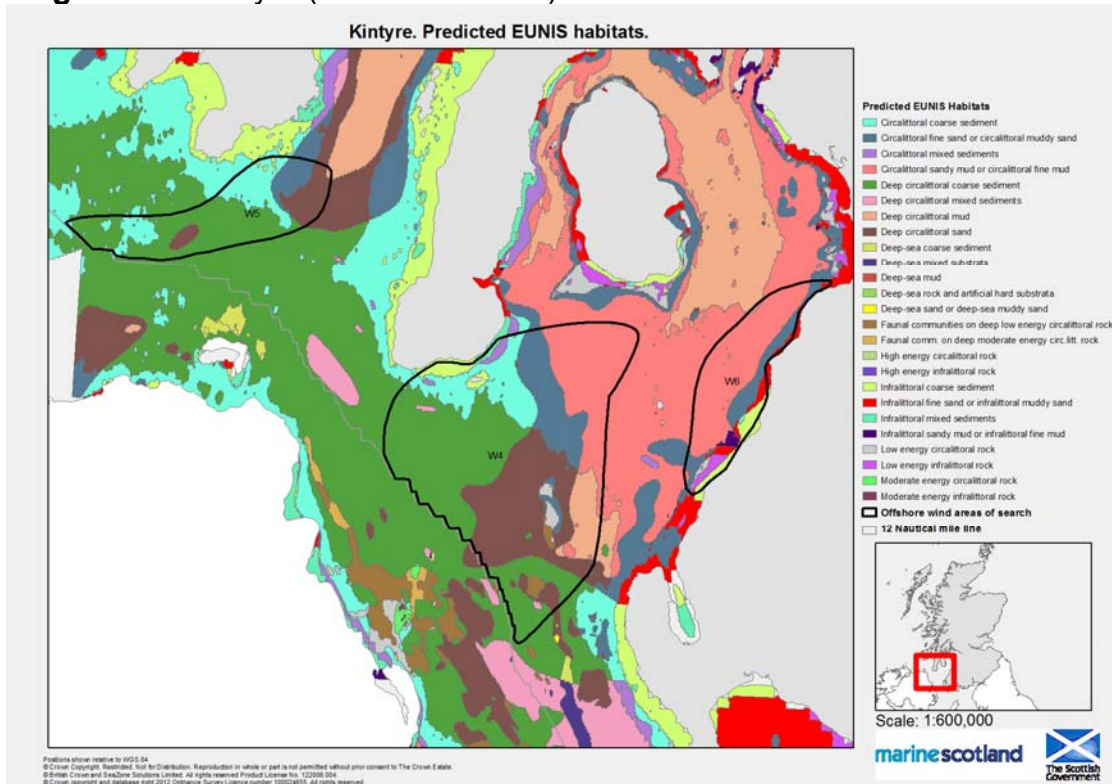


Figure 7.13 Kintyre (Areas of Search) Seabed Predicted EUNIS Habitats



7.5 Cultural Heritage

- 7.5.1 The mapping shows that the area is rich in wrecks and that extensive areas around the coast of the islands and mainland are likely to be rich in submerged archaeology. There is a particularly high concentration in wreck sites in the area identified to the south and west of the Kintyre peninsula.

Figure 7.14 Key Cultural Heritage Assets in the Argyll (Areas of Search)

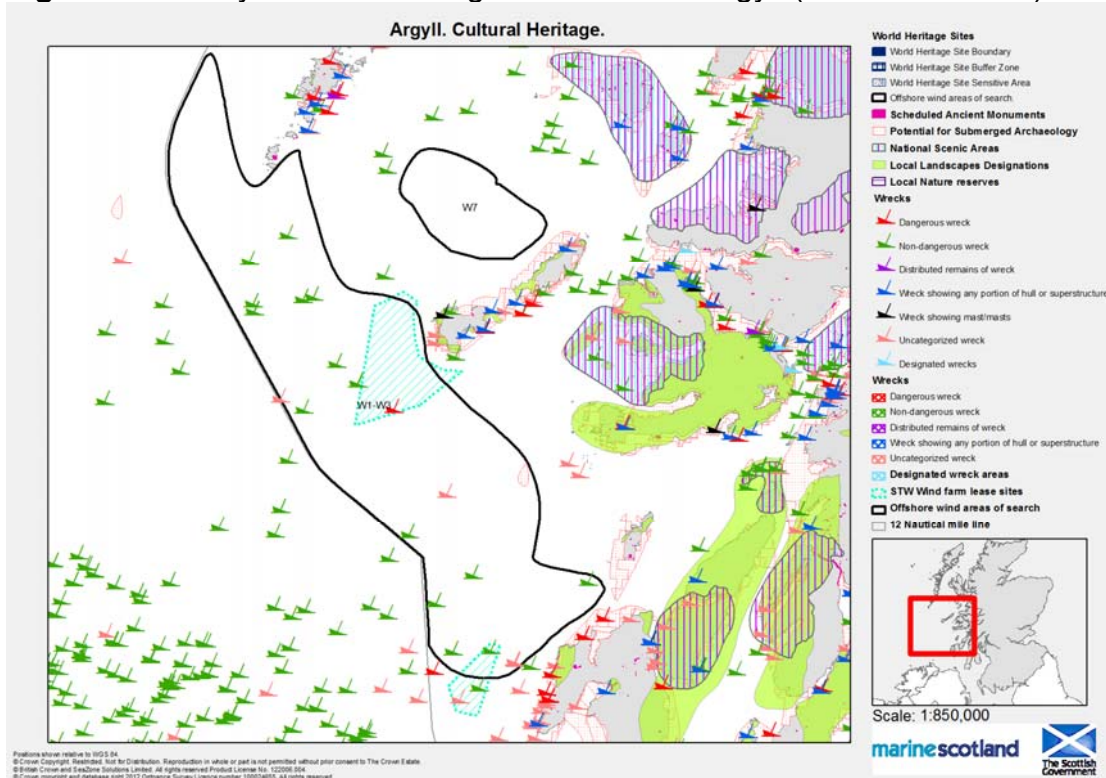
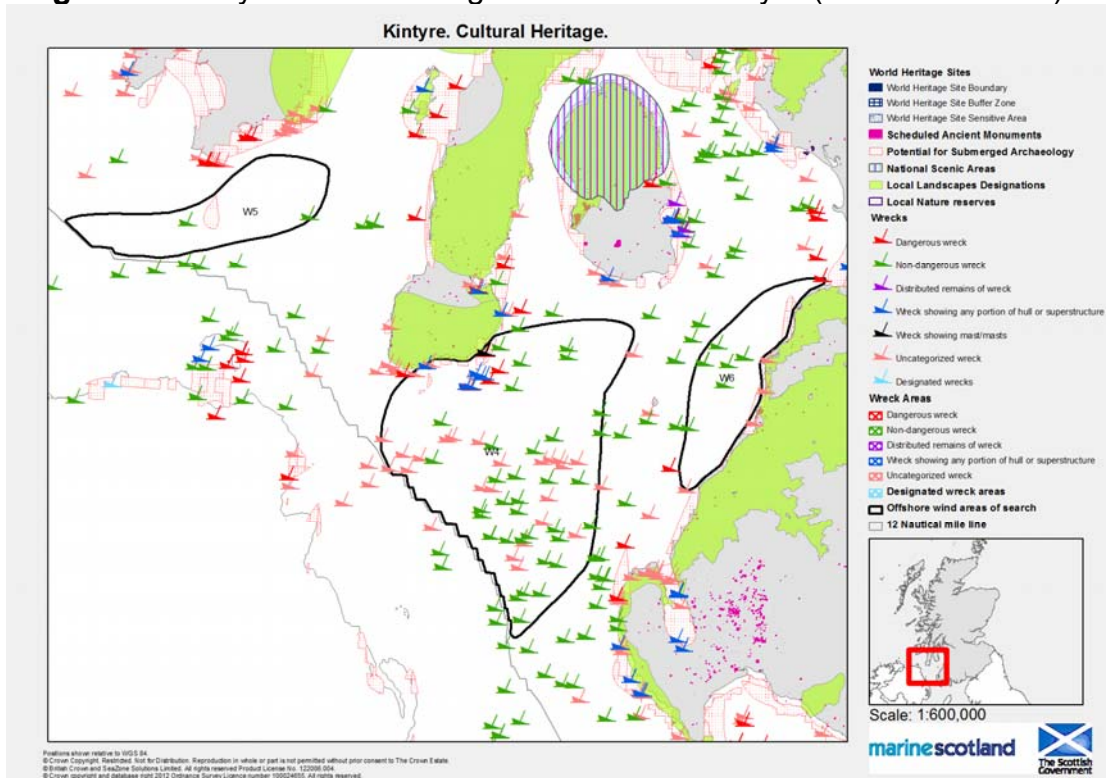


Figure 7.15 Key Cultural Heritage Assets in the Kintyre (Areas of Search)



7.5.2 The mapping shows that the area is rich in wrecks and that extensive areas around the coast of the islands and mainland are likely to be rich in submerged archaeology. There is a particularly high concentration in wreck sites in the area identified to the south and west of the Kintyre peninsula.

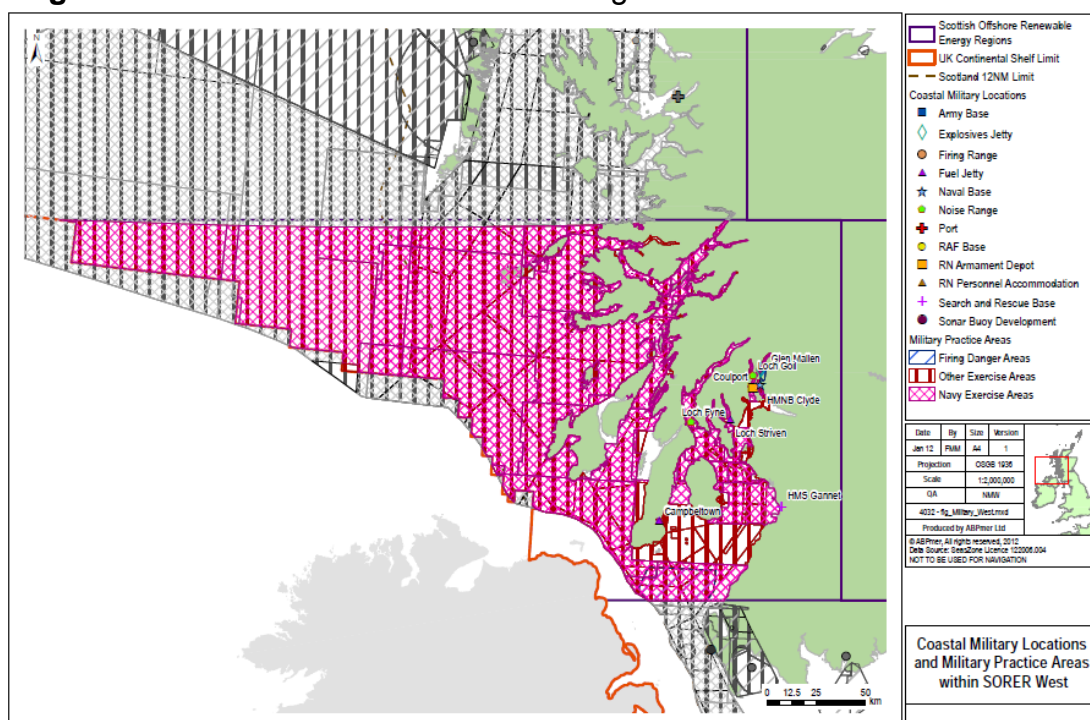
- 7.5.3 To the east, the smallest area of search in the region lies close to the Ayrshire Coast. The coast has numerous sites of historic interest, including Category A listed buildings such as Culzean Castle (which sits within a Garden Designed Landscape), and Dunure Castle and Corsewall Lighthouse to the south, with scattered Category B and C listed lighthouses and harbours, and clusters of listed buildings in coastal settlements such as Girvan. There are also several scheduled monuments on and close to the coast, such as an extensive Roman Fort to the North of Girvan, and clusters of sites around Loch Ryan and in other places along the coast.
- 7.5.4 To the south of Kintyre, Sanda Island, including St. Ninian's Chapel, a scheduled monument and Category B listed building lie within the area of search. The northern end of the area of search may be of particular interest given that it lies close to the coast, where submerged archaeology is likely and there are numerous designated sites and buildings on the Kintyre peninsula. These resources vary in character but include various chapels, castles and dwellings, which are listed or recorded as scheduled monuments. Extensive archaeological investigation has also taken place along the southern coast of the Kintyre peninsula. Similarly, the Ayrshire and Arran, and Dumfries and Galloway coasts include many sites and buildings of interest.
- 7.5.5 The area south of Islay also includes a small area of search, and is close to further coastal areas, where submerged archaeology is likely to exist. There are fewer wreck sites within the area of search, but significant clusters close to Islay's coast. There are further areas of interests south of the area of search where there are several wrecks and associated areas of archaeological interest. On Islay, there are numerous scheduled monuments and listed buildings on and close to the coast, including lighthouses (Port Ellen which is Category B listed), cairns, forts, chapels and the distinctive Islay distilleries and their associated buildings and piers, which are listed. Port Ellen and, further north, Portnahaven on Islay also include numerous buildings of historic interest.
- 7.5.6 The larger areas of search to the west and south of Tiree encompass a number of wreck sites. Areas of archaeological interest close to the site include those highlighted on the west coastal of Islay, around Colonsay, Mull, Tiree and Coll, although the area of search itself only physically overlaps with a small area within its north eastern boundary. On land, these buildings and remains often relate to past settlement and religion (chapels, burial grounds, crosses, townships), and range from local to national levels of interest (e.g. Iona). There are also several listed lighthouses close to the islands' coasts, and Skerryvore lighthouse lies within the boundary and is designated as a Category A listed building. The area to the south of Barra including Mingulay also includes scheduled sites and listed buildings (including the Category A listed Barra Head lighthouse) and there is a dense cluster of wrecks around the Barra coast.

7.6 Defence

7.6.1 The coastal military locations which occur within this region are shown in Figure 7.16. Military interests in this region include:

- HMNB Clyde located at Faslane;
- Loch Goil and Loch Fyne Noise Ranges, for measuring the radiated acoustic signatures of surface and subsurface vessels;
- Military fuel depots at Loch Striven (near Dunoon) and Campbeltown, which provide maritime fuelling facilities to visiting UK and North American Treaty Organisation (NATO) vessels;
- HMS Gannet, located at the North side of Glasgow Prestwick Airport which operates three Sea King helicopters in a Search and Rescue capacity. This is the only military air bases on the West coast (ABPmer, RPA and SQW, 2011); and
- A Royal Navy Scottish Exercise Area (SXA), which covers most of the inshore and offshore waters within this SORER.

Figure 7.16 Defence activities in West Region



7.6.2 Figure 7.17 shows the known defence activities which take place within the current search areas for offshore wind energy in both Argyll and Kintyre.

Figure 7.17 Defence activities in the Argyll (Areas of Search)

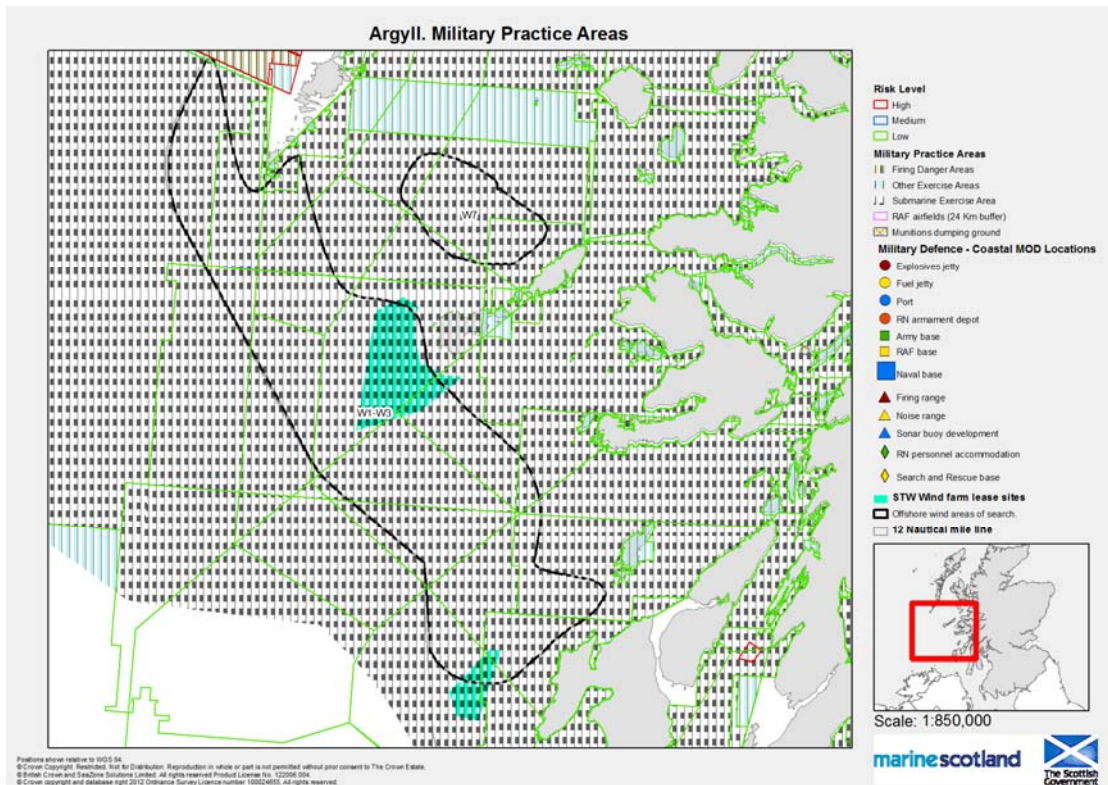
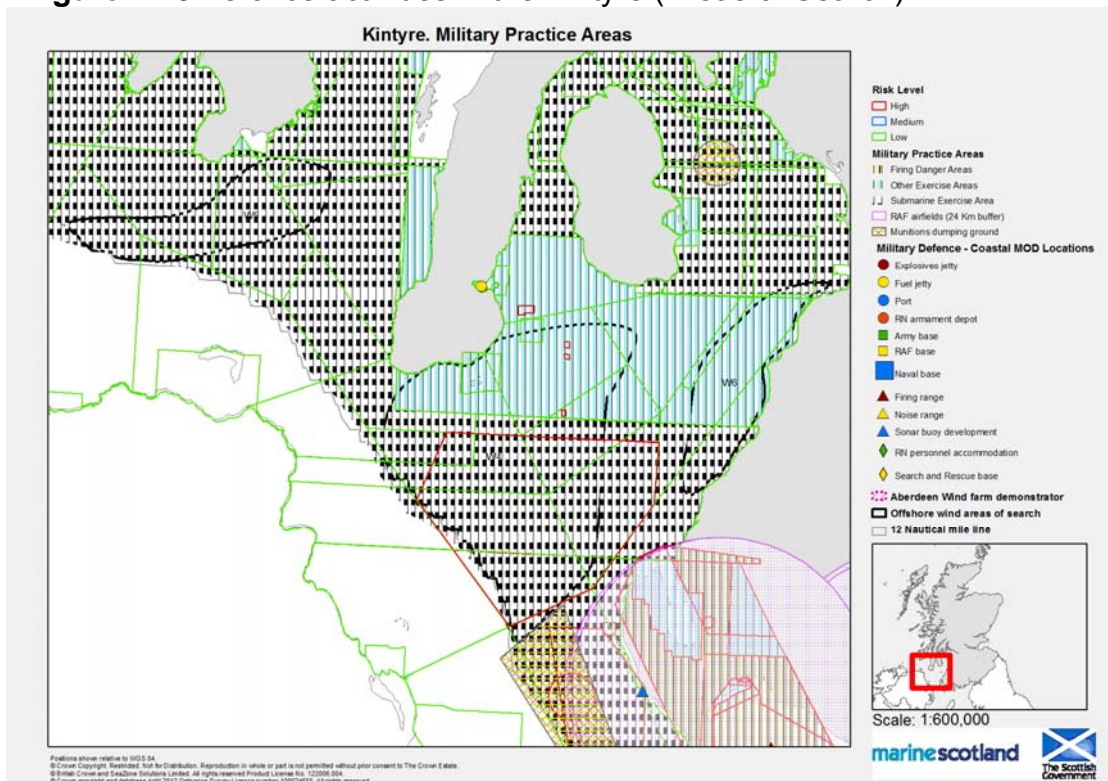


Figure 7.18 Defence activities in the Kintyre (Areas of Search)



7.6.3 Baxter et al (2011) stated that out of the total MOD and Armed Forces personnel employed in Scotland in 2010, 25% were employed in Argyll and

Bute. In addition, a further 1,690 civilians (29% of the total employed in Scotland in 2010) were employed in Argyll and Bute and 1,049 civilians (18% of the total employed in Scotland) were employed in Glasgow (Baxter et al, 2011).

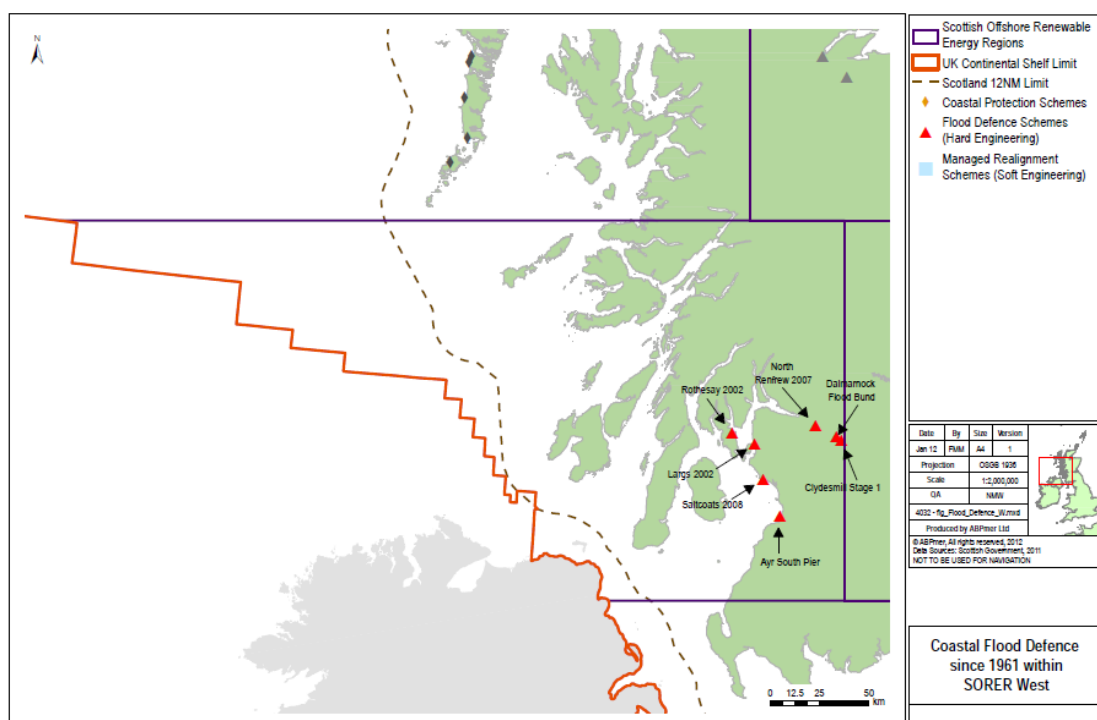
7.6.4 UKMMAS (2010) reported that HMNB Clyde, located at Falslane, is the largest single site employer in Scotland with a workforce of 6,500 drawn from the Royal Navy, MOD civilians, Babcock Naval Services (the MOD's industrial partner at the base) and external contractors.

7.7 Environment

Coastal and Flood Protection

7.7.1 In this region there are seven hard engineered flood prevention schemes, located at Ayr, Saltcoats, Largs, Clydesmill, Dalmarnock, Rothesay and North Renfrew (Figure 7.19). All of these schemes were undertaken under the Flood Prevention (Scotland) Act 1961.

Figure 7.19 Coastal and Flood Defence Schemes in the West Region



Designated Sites

7.7.2 This extensive region includes numerous designated sites:

- On the Ayrshire and Dumfries and Galloway Coast, key areas of interest include Loch Ryan, which is highlighted as a Marine Consultation Area, and some SSSIs designated along the coast;

- Ailsa Craig SPA and SSSI lies between two of the areas of search and is recognised for its seabird assemblage. Of less direct relevance, to the north, the Arran Moors SPA and SSSI is protected for breeding Hen harrier;
- There are several SSSIs on or close to the Kintyre Coast including Sanda Islands which lies within an area of search and is protected for its bird interest. Sanda and Sheep Islands area also identified as particular significance for black guillemot, hence its inclusion within an MPA area of search (see below);
- The area of search to the south of Islay, could interact with designations on the island, including the Oa SPA and SSSI (protected for Chough), and the Rinns of Islay SPA, SAC and SSSI (protected for a range of bird species and other features) although these sites are general dependent on land management activities, as opposed to offshore development. South East Islay Skerries SAC, protected for grey seal, may be of greater relevance;
- The larger area of search, extending from Islay in the south east to Barra in the north west, could also have potential implications for protected sites on Islay and Colonsay. However, of greater relevance, is the sites on Tiree and Coll. Whilst some of these sites, like those on Islay, relate more to bird species and management of crofting land / machair, others are designated for seabird species, such as the Tiree Wetlands and Coast SPA (protected for a number of bird species including geese and waders), and the Coll SPA (also protected for geese) and may be of more direct relevance to both the larger and smaller areas of search. Rum is also covered by a number of international and national designations, including SPA status for its seabirds, divers and Golden eagle, and SAC status to protect its rich diversity of onshore and coastal habitats;
- To the south of this area on the Northern Irish coast, Rathlin Island SAC is protected for its marine and coastal habitats, Red Bay SAC is an protected sea inlet, and the North Antrim Coast SAC is also a recognised coastal habitat;
- At the north west end of the larger area of search (slightly overlapping with the boundary), the Mingulay and Berneray SPA is protected for its seabirds including puffins, guillemot, fulmar, kittiwake, shag and razorbill. Close to, but outwith the area of search, the East Mingulay cSAC is a protected reef;
- To the east of the large area of search, Stanton Banks cSAC has been highlighted as an important reef feature; and
- In terms of areas of search for MPA status, an area initially identified around Coll and Tiree has been replaced by an area extending from Skye to Mull, which is of interest for basking shark, and minke whale. In addition, the Clyde Sea Sill, extending from Kintyre to Loch Ryan, has been identified as a possible MPA, subject to further assessment, as a result of its value for black guillemot and persistent surface fronts.

Figure 7.20 Designated sites in the Argyll (Area of Search)

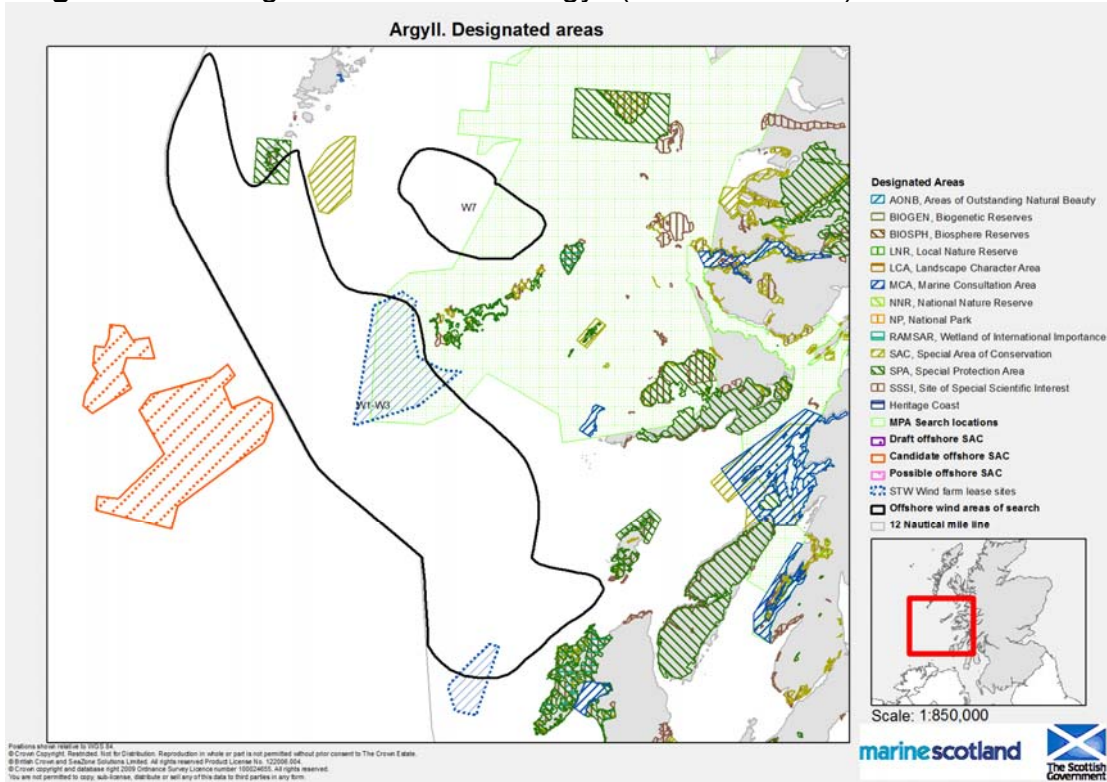
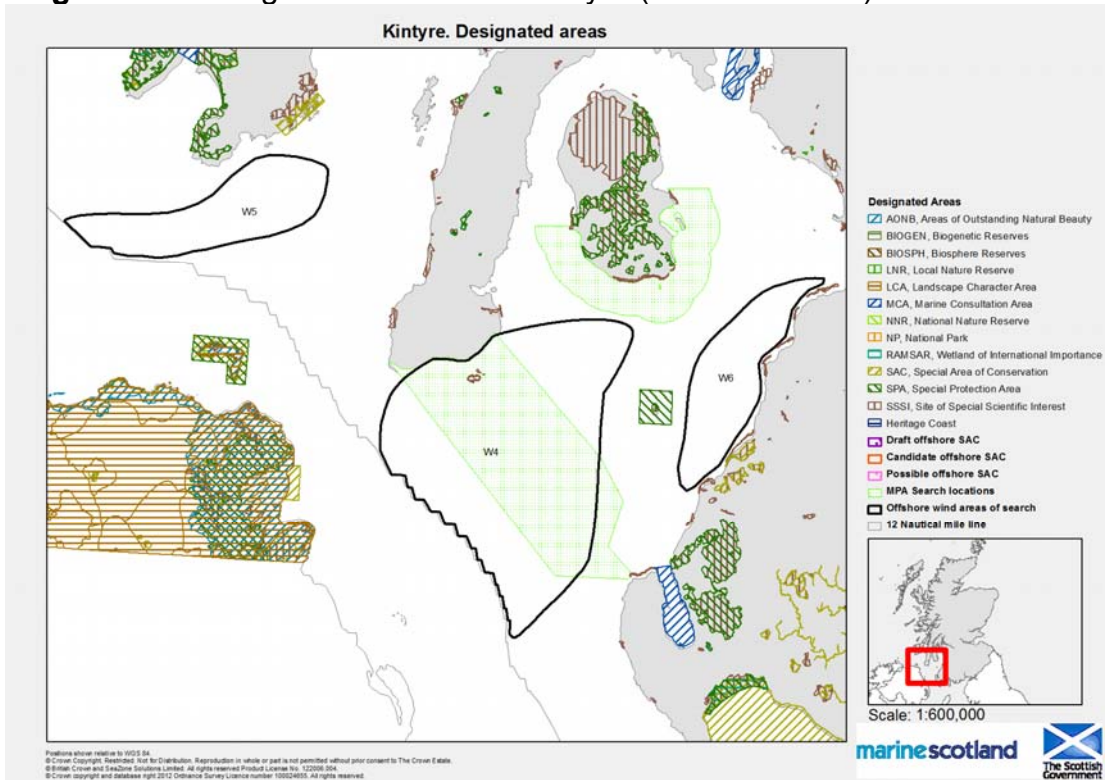


Figure 7.21 Designated sites in the Kintyre (Area of Search)



Landscape Designations with Region

- 7.7.3 There is one National Scenic Area, North Arran within Ayrshire which has a strong coastal relationship. Within Argyll and Bute there are a further four coastal NSA, however these are in some instances closely enclosed by the surrounding landforms, limiting views with the areas of search identified within scoping. Local landscape designations also extend over much of the coastal area of South Ayrshire, and the peninsulas of Argyll and Bute. The areas of search identified at scoping lie to the south of Arran and the Kintyre peninsula, to the south of Islay and Colonsay. **Further confirmation of the areas of search may mean that some of the NSA are removed from further consideration due to their visual containment by the surrounding landform.**

- Argyll and Bute

- 7.7.4 **Kyles of Bute** NSA includes the northern edge of Bute and the surrounding slopes above Loch Ruel, towards Tighnabruaich in the west and Colintrave in the east. There is a strong sense of *drama of the Kyles*, and the sea is the focus of the views. The enclosing hills are covered in *verdant woodland*, and the slopes are *punctuated by rocky outcrops*. In places, *small fields* and pastures lie at the edge of the shore *between water and woodland*. Where present, human habitation is limited to the narrow coastal strip and this provides a *juxtaposition of human settlement and the wider undeveloped landscape of sea and hills*. It is a *peaceful landscape of constant movement and ever-changing vistas*. The head of Loch Ruel is noted as an example of one of the best the *gradual transitions of landscape from land to sea*.
- 7.7.5 **Knapdale** NSA reaches from Loch Caolisphort in the south to the surrounds of Crinan in the north. It is a landscape of *distinctive ridges and loch-filled trenches*. It is also a landscape dominated by *skylines* which form strong linear features within the landscape. *Atlantic oak woodland extends over the ridges and hollows* of the landscape and adds a wild and natural dimension to views which also harmonises the scenery. The hills and woodlands make it an *ever-changing landscape of colour, sound and smell*. The sense of place and history makes it a *profoundly evocative, ancient place*. The roads to the coast are narrow and winding, making it a *long, slow journey to the sea*, but the coastal experience is remote, isolated and secluded. Distinctive local landscape features include the *dramatic juxtaposition of ridges and volcanic plugs rising from the flat expanse of Moine Mhor bog* and the *centre of parallel ridges and secret lochans*. In the south there are *dramatic sea views* and the landscape is dominated by the presence of the sea. The basin of the *Crinan Canal* also is a special feature of the coastal landscape experience, contributing to the uniqueness of the landscape.
- 7.7.6 **Jura** NSA extends over the southern area of Jura to the enclosing slopes above Loch Tarbert. The special qualities¹ of the landscape include the *distinctive peaks of the Paps of Jura*, which tower over the surrounding

¹ <http://www.snh.gov.uk/docs/B699722.pdf>

landscape and make a distinctive landmark. *Human settlement exists on the margins of the vast, featureless moorland terrain. The coastal scenery is varied from the bays, beaches and headlands of the east coast, the steep north coast and the isolated and inaccessible Loch Tarbert, the short south coast with forestry plantations and the uninhabited and inaccessible west coast with raised beaches, ancient caves and sea cliffs. The landscape has little human impact and is noted for its large tracts of wild land, and herds of red deer are often visible. Although close to the mainland, the challenges of access to the island makes it seem more remote.*

- 7.7.7 Scarba, Lunga and the Garvellachs** includes the group of islands which stand to the west of Luing. They are *uninhabited, remote, wild islands* with no permanent habitation. Together the islands create *a seascape of distinctive and contrasting island groups*. Although now isolated and remote, the islands have a long history of human occupation and provide *solitude, sanctuary, reflection and retreat*. There is also *exceptional marine life* within the seas surrounding the islands. Location specific qualities include the stretches of water with the *notorious Corryvreckan and the Grey Dogs* where tidal conditions and underwater geology create spectacular sea conditions. The *pyramidal island of Scarba* has a distinctive profile, and the summit offers panoramic views to the Argyll and Irish coasts. *Lunga has an irregular shape, and is surrounded by attendant islands and reefs, and the low lying slate island of Belnahua* has a distinctive low, flat profile. At the outer edge of the island group, the *sloping and rocky Garvellachs* have exposed steep cliffs.
- 7.7.8 Loch na Keal**, Isle of Mull NSA includes the surrounding slopes above of Loch na Keal, and the islands within the bay which include Ulva, Gometra, Staffa and the Treshnish Isles. The special qualities include the *highly distinctive seaways and shores* surrounding the sea loch, and the influence of the islands. The changing character of the landscape from the inner sea loch to outer isles provides *a voyage from enclosed sea loch to the open Atlantic*. The high terraced hills provide a *dramatic coast of basalt terraces and cliffs*, with their distinctive stepped profile. The sea loch contains *views of an island-studded seascape* which includes *islands and islet groups of astonishingly varied character*. It is *a vast natural world, dwarfing human settlement*, which is sparse within the landscape. The distinctive character of the islands provide location specific qualities which include the *world famous Staffa and Fingal's Cave, the horizontal Treshnish Isles and the recognisable Dutchman's Cap*.
- 7.7.9 Lynn of Lorn** NSA includes the coastal edge of Benderloch and Appin, the island of Lismore and surrounding small isles. Special qualities of the landscape include the island of Lismore which provides *a long-inhabited, fertile landscape* which provides a *green oasis*. The landscape is *strongly orientated in a northeast-southwest pattern* and there is a strong contrast between the *small scale, low-lying landscape within a vast highland backdrop*. The *coastline has a great variety and diversity*. The area is *strategic in its location and has a rich history*, and the area is also an

important *place of retreat and seclusion*. *Castle Stalker, is one of Scotland's iconic romantic images* and stands on an islet at the entrance to Loch Laich.

7.7.10 Significant areas of Argyll and Bute are covered by the local landscape designation Area of Panoramic Quality set out in the Argyll and Bute Local Plan². Areas of Panoramic Quality include the southern tip of Kintyre, areas of north Kintyre, areas of Cowal and Rothesay, the shores of Loch Fyne, large parts of Islay, north Jura, all of Bute (excluding NSA) and extensive parts of the surrounding peninsulas, north of Knapdale and the coast of Lorn and large areas of western Mull. Although these areas are marked on the proposals maps, they do not have any supporting information on their justification or key characteristics.

- *Inverclyde*

7.7.11 The West Renfrew Hills Scenic Area is identified within the Inverclyde Local Plan (Adopted 2006)³, and includes areas with coastal views.

- *North Ayrshire*

7.7.12 **North Arran** NSA includes the whole of the northern area of Arran with its dramatic upland landscape. The special qualities of Arran include a mountain presence that dominates the Firth of Clyde and its surrounds. There is a striking contrast between the wild highland interior and the populated coastal strip. It provides a historical landscape in miniature with different periods of historic land use layered within the landscape. The high mountains form a dramatic, compact mountain area, and the distinctive coastline has a rich variety of forms. North Arran is also one of the most important geological areas in Britain with a variety of rocks from different geological periods. The accessibility and scenery make it an exceptional area for outdoor recreation and also provides the experience of highland and island wildlife close at hand.

7.7.13 The North Ayrshire Local Development Plan identifies Special Landscape Areas which includes the NSA in **North and Central Arran** and **Clyde Muirshiel Regional Park**⁴.

- *South Ayrshire*

7.7.14 There are no NSAs in South Ayrshire, however extensive areas of South Ayrshire are designated as 'Scenic Area' within the Proposed Local

² Argyll and Bute Local Plan (Adopted 2009) <http://www.argyll-bute.gov.uk/planning-and-environment/local-plan>

³ Inverclyde Local Plan (Adopted 2006) <http://www.inverclyde.gov.uk/planning-and-the-environment/planning/development-plan/adopted-inverclyde-local-plan-2005>

⁴ North Ayrshire Proposed Local Development Plan Part 2 Detailed Plan Policies 2011 <http://www.north-ayrshire.gov.uk/Documents/CorporateServices/LegalProtective/LocalDevelopmentPlan/LDPPart2.pdf>

Development Plan⁵. This includes the majority of the coast from the southern boundary with Dumfries and Galloway, to just south of Ayr.

Marine Mammals, Basking Sharks and Seals

- 7.7.15 Cetacean species that occur in and around these areas of search include harbour porpoise, minke whales, short beaked common dolphin, white beaked dolphin and orca. To a lesser degree, the white sided dolphin and Risso's dolphin are also encountered (JNCC Cetacean Atlas,2003). The most important area to cetaceans is the easternmost part of W7. The rest of the areas of search W1 to W6 show a moderate to low level of encounters with cetaceans.
- 7.7.16 Area W1 to W7 are all within the area recognised as holding the most basking shark "hotspots" in Scotland. The highest density of basking sharks is close to area of search W7. This area lies between two of the sites where relative high numbers of basking sharks have been sighted per hour. Speedie (2009) states that waters around Hyskeir, Canna and Coll show the highest levels of densities of sharks. Other areas with high numbers of sightings per unit of observation effort include West Mull and the Treshnish Isles, the Clyde Sea, and South of Barra.
- 7.7.17 Investigations are still required to clarify the nature of the interactions of basking sharks with renewable devices.
- 7.7.18 Three SACs have been put in place in proximity of the areas of search in the west sector. One of these lies 18 nm east of W1-W3 at the Treshnish Isles, established for the protection of grey seals. The other two SACs have been implemented on the Isle of Lismore to protect common seal populations therein. Lismore is a composite site comprising five groups of small offshore islands and skerries which are extensively used as haul-out sites by the colony, (JNCC). Another SAC has been put at the south-east of Islay Skerries where common seals use the rugged coastline to haul-out, pup and moult, (JNCC).
- 7.7.19 Seal haul-out sites have been identified in many locations around areas of search W1 to W7. At Barra Head within the upper east tip of W1-W3, there is a grey seal haul-out site. Three more sites have been identified to the north of W7 at Canna for common and grey seals. There is a total of 12 haul-out sites to the east of W1-W3 at Tiree-Coll and Mull with all but one of these populated by common seals.
- 7.7.20 Directly south of W1-W3 in Oronsay, Jura and Islay there are collectively seven haul-out sites the three easternmost ones are for grey seals, the remainders for common seals. Further south there is a mixed haul-out site (common and grey seals) within area of search W4. Three common seal

⁵ South Ayrshire Proposed Local Development Plan 2012 <http://www.south-ayrshire.gov.uk/documents/proposed%20ldp%20document2.pdf>

sites can also be found directly north of W4, two on the east coast of the Kintyre peninsula and one on the southern tip of Arran.

Figure 7.22 Cetaceans, Seals and Basking Sharks in Argyll (Area of Search)

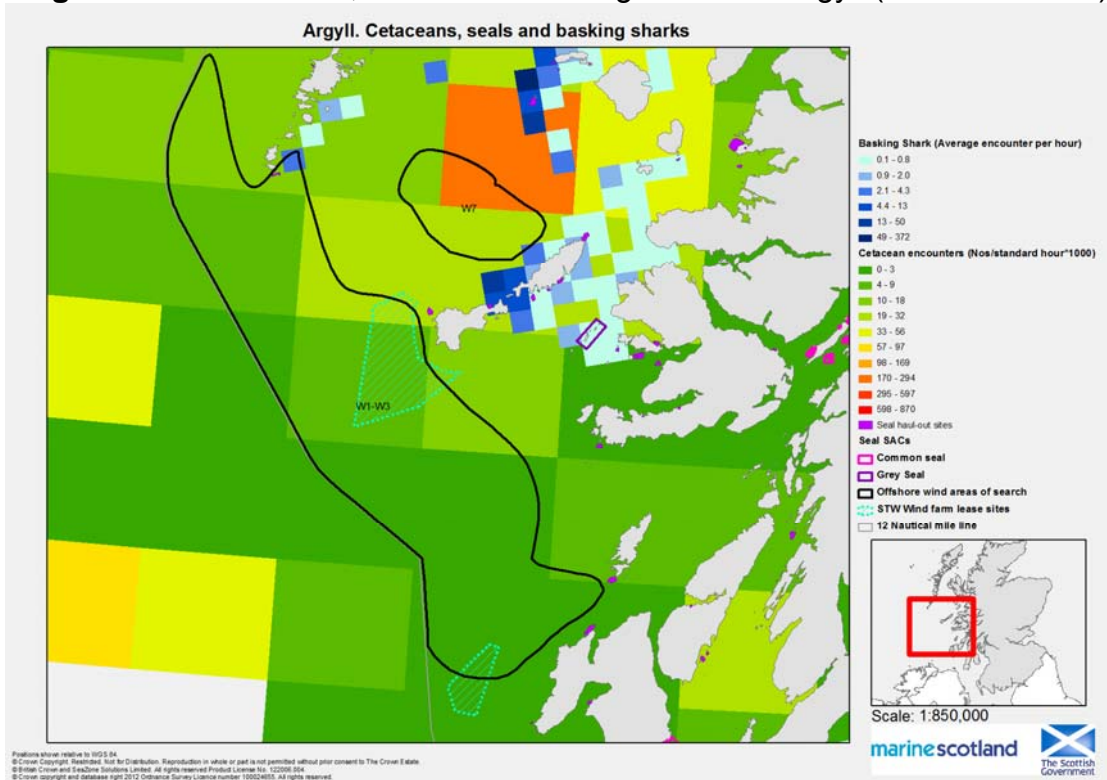
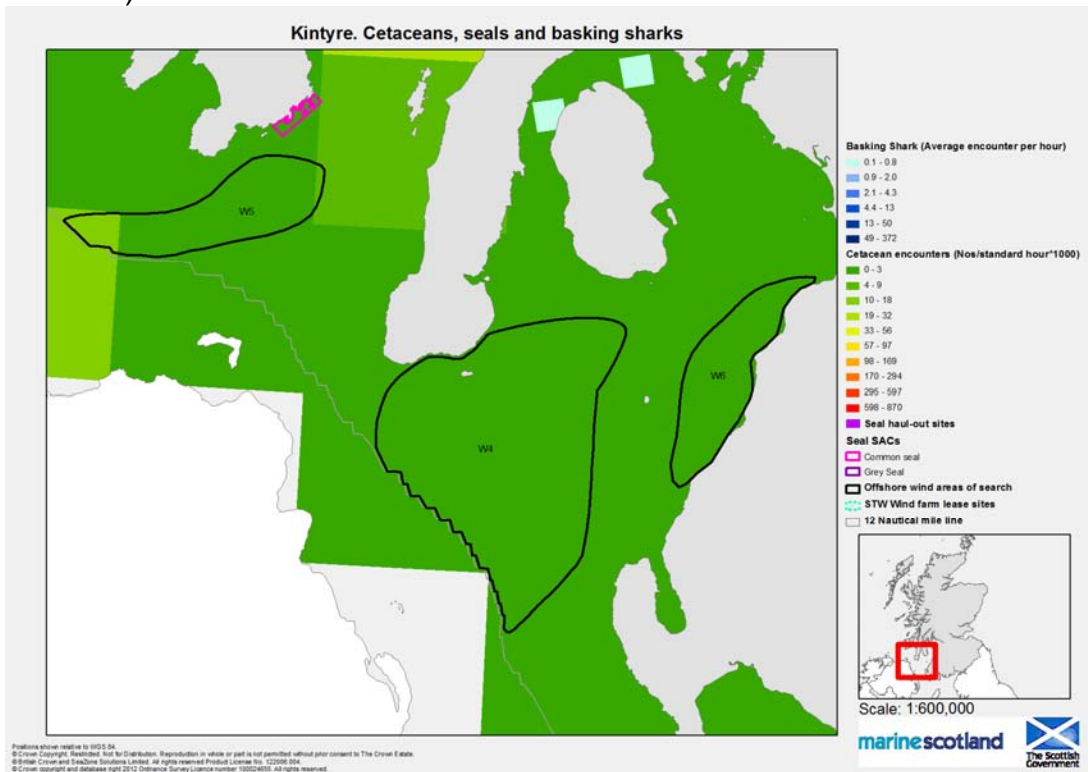


Figure 7.23 Cetaceans, Seals and Basking Sharks in Kintyre (Areas of Search)



Seabirds

7.7.21 Ten SPAs have been established within close proximity of the areas of search in the west sector.

7.7.22 SPAs in the West sector:

- North west of W7 at Canna-Sanday which during the breeding season regularly supports 21,000 individual seabirds including: Puffin, Guillemot, Kittiwake, Herring Gull, Shag;
- The isle of Rum, which is noted for its breeding pairs of Manx shearwater (61,000) and also rarer species like golden eagle (4 pairs) and red throated diver;
- The north west tip of W1-W3 at Mingulay and Berneray is an important breeding site for Razorbill, Puffin, Guillemot, Kittiwake, Shag;
- South west of Coll at the Treshnish Islands important for their breeding seabird colonies, especially Storm Petrel. The most important seabird colonies are on Lunga, which supports the majority of Storm Petrels. The Treshnish Isles are also of importance as a traditional wintering locality for Greenland Barnacle Goose;
- West of the southwestmost part of W1-W3 two SPAs have been designated, one at North Colonsay and the Western cliffs important for breeding seabirds, including gulls and auks. These feed outside the SPA in surrounding waters as well as further away. Chough is also a resident species, breeding on cliff areas and foraging widely. They depend on the diverse mix of habitats present within the site and their continued low-intensity agricultural management. Another SPA at Oronsay and South Colonsay established to protect chough and cornkrake populations;
- South of W1-W3 on the Island of Islay three more SPAs exist at Gruinart Flats, Bridgend Flats and at Laggan, these are designated to protect passing populations of barnacle goose and Greenland white fronted goose; and
- South of the Kintyre peninsula between area of search W4 and W6, this SPA protects nesting sites for a range of seabird species, notably one of the largest colonies of gannet in the world. Also lesser black backed gull, guillemot, kittiwake herring gull are some of the 65,000 seabirds that this site supports during breeding season.

7.7.23 The proportional seabird at sea densities by species show considerable variation within the west sector Argyll and Kintyre, as areas of search W1 to W7 cover such a large area. During the breeding season, area W4 south of the Kintyre peninsula shows higher proportional densities due the presence of breeding black legged kittiwake, herring gulls, razorbills, gannets and common guillemots amongst others. Area W5 in the winter season shows the highest numbers due to mostly herring gulls and common guillemots overwintering here.

7.7.24 Outwith the areas of search, during the breeding season high proportions of the herring gull population are found directly east of area W1-W3. There are

high proportions of the lesser black back gull and black legged kittiwake in the same location during winter.

- 7.7.25 There are many IBAs around the areas of search in this the west region according to information available from RSPB.
- 7.7.26 The island of Tiree and Coll to the south of area W7 and east of area W1-W3 holds an internationally important IBA for a range of birds of wetland and low intensity agricultural land. Mull hosts an IBA for upland birds. Also, breeding black throated diver and pintails are included in this IBA.
- 7.7.27 The Colonsay and Oronsay IBA east of the foot of area W1-W3 hosts 11,000 pairs of breeding seabirds on a regular basis, and is also nationally important for breeding common guillemot (9,050 pairs) and black legged kittiwake (5,650 pairs). Rarer species like the corncrake have also been recorded.
- 7.7.28 The IBA on the west of Islay supports breeding raptors and waders, and wintering geese which come from roosts in other Islay IBAs to feed in this area.
- 7.7.29 An IBA is located less than 3 nm due south of the kintyre peninsula within area of search W4, with more IBAs established at Gigha Island, Machrihanish, the Arran Moors and Loch Ryan north of the Stranraer.
- 7.7.30 RSPB reserves can be found at Coll, Tiree, Oronsay, The Oa on the south of Islay, and Ailsa Craig.

Figure 7.24 Seabirds, Important Bird Areas and RSPB Reserves in Argyll (Area of Search)(Winter)

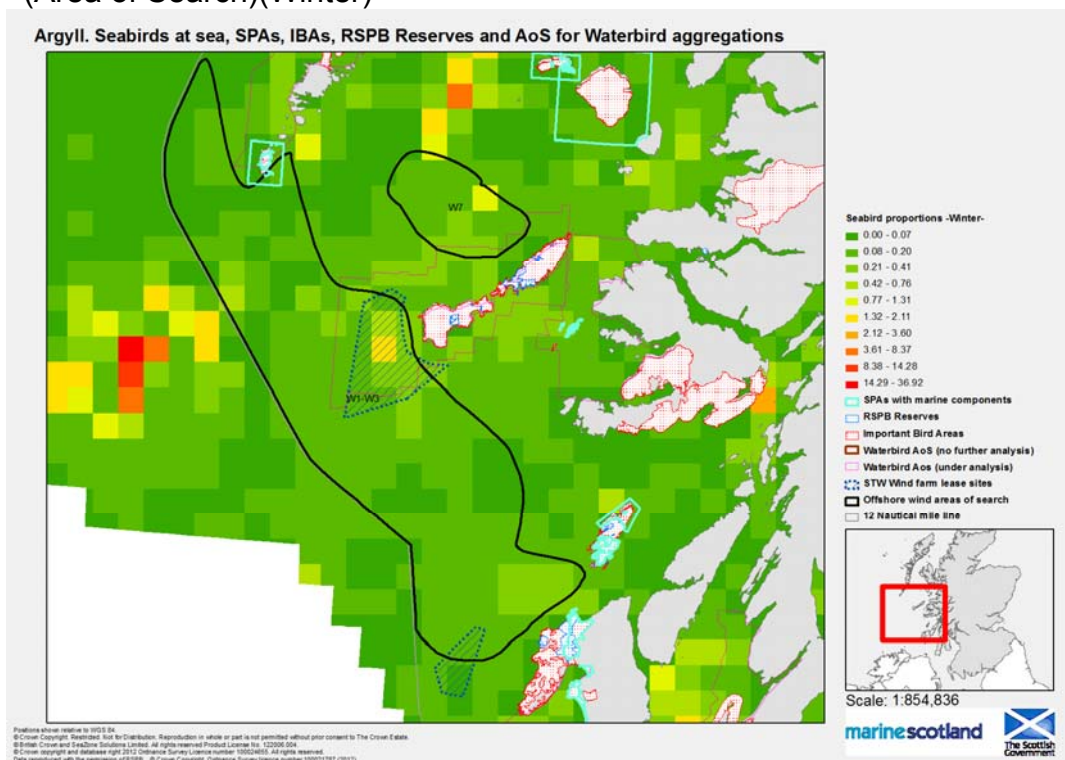


Figure 7.25 Seabirds, Important Bird Areas and RSPB Reserves in Argyll (Area of Search)(Breeding)

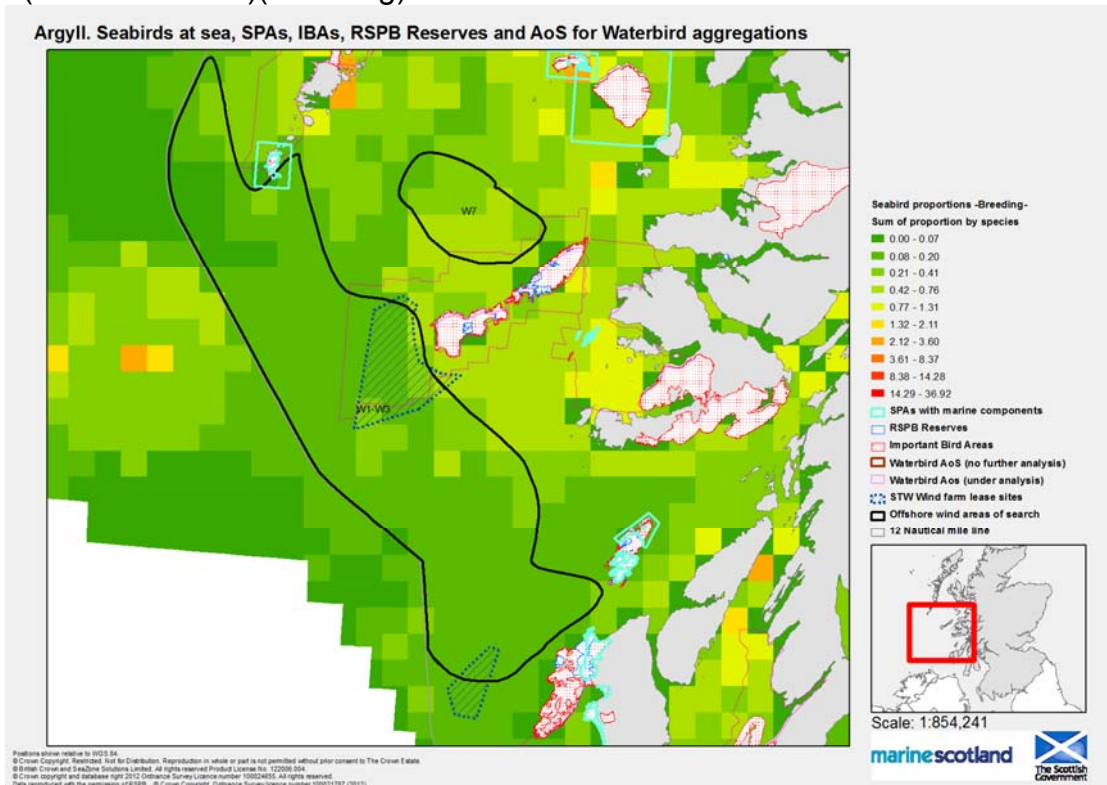


Figure 7.26 Seabirds, Important Bird Areas and RSPB Reserves in Kintyre (Areas of Search)(Winter)

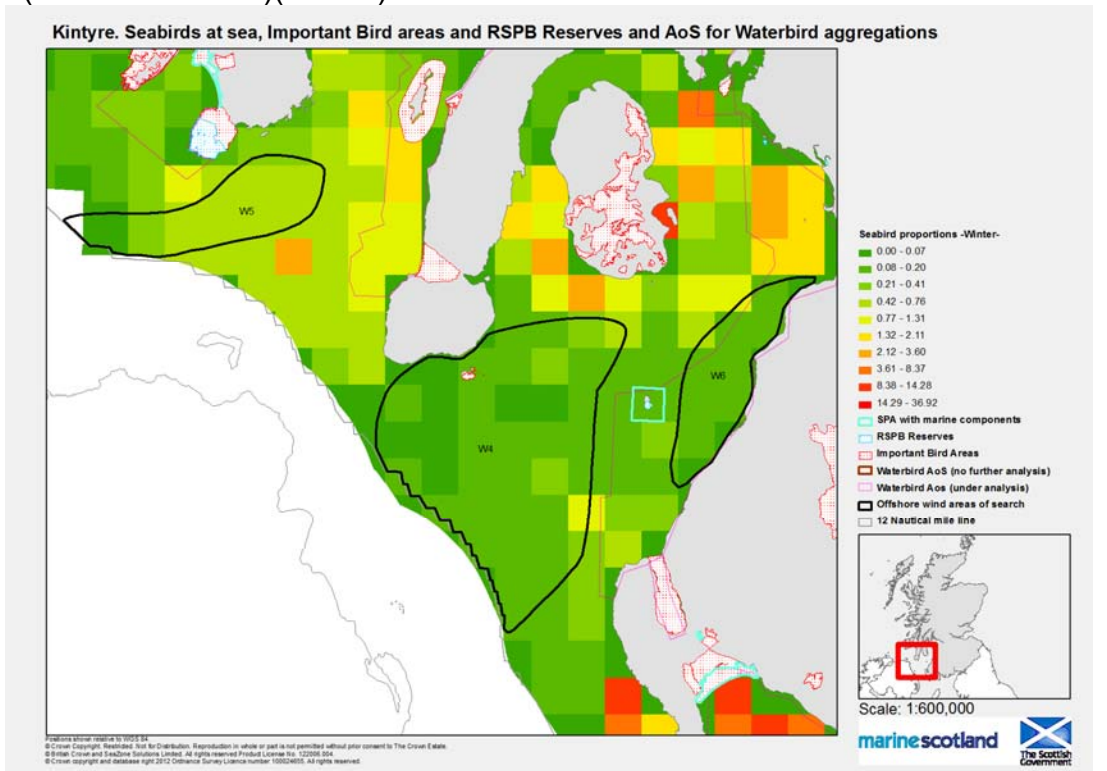
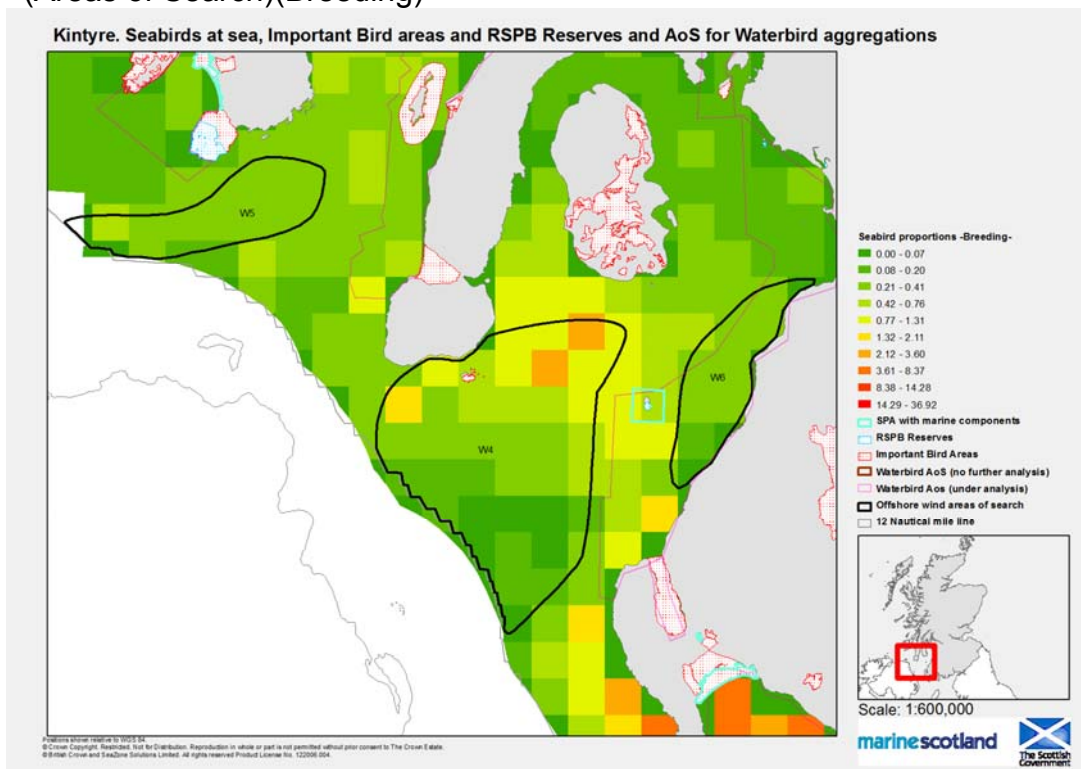


Figure 7.27 Seabirds, Important Bird Areas and RSPB Reserves in Kintyre (Areas of Search)(Breeding)



7.8 Fishing

Commercial Fisheries Regional Overview

- 7.8.1 Landings caught by UK vessels within the West SORER had an average annual value of £44.2 million (11.6% of the Scottish total) and an average annual live weight of 44,100 tonnes (10.3% of the Scottish total) for the ten year period from 2001 to 2010.
- 7.8.2 The majority of the value and volume of landings from within the whole of the West SORER are shellfish, however, this differs markedly between inshore waters (within 12 nm from the coast) and offshore waters (greater than 12 nm from the coast). Nephrops accounted for 60% of the total catch value from inshore waters in 2010 whilst scallops and 'other shellfish' each accounted for 18% of the total catch value. Offshore, landings of mackerel accounted for 59% of the total catch value, 22% were whitefish and 13% were shellfish.
- 7.8.3 In 2010, nearly half the value of landings from inshore waters was taken by vessels 15m and over in length, whilst 25% was landed by vessels over 10m and under 15m and 27% was landed by vessels 10m and under. Offshore, 86% of the total value was taken by vessels 15m and over in length.

7.8.4 For inshore waters, 46% of the total catch value was caught by Nephrops trawl, 30% was caught by pots and 17% by dredges; whereas for offshore waters, 65% was caught by pelagic trawls and 13% by demersal trawls.

7.8.5 There are 524 fishermen employed on Scottish based vessels in the Campbeltown and Oban areas and a further 559 in Ayr. 990 of these are employed full-time and 93 are part-time. Approximately 17% of the Scottish total of employment in the catching sector is in the West SORER (Marine Scotland, 2011d). For much of this region, direct employment in the fishing sector accounts for between 2% and 5% of total employment (Baxter et al., 2011).

Area of Search Interactions

7.8.6 In sites W1-W3 and W7 in the Argyll area spawning species include: herring, sprat, nephrops and norway pout (high intensity), the temporal extent of the spawning periods of these species covers the whole year due to the inclusion of nephrops which spawn all year round.

7.8.7 Species' nursery sites that overlap with these areas of search around the Argyll area are many: cod, haddock, herring, mackerel, nephrops, norway pout, saithe, sandeel and whiting.

7.8.8 Areas of search W4, W5 and W6 overlap with the spawning sites for whiting, herring, nephrops, plaice and sprat and the nursery sites of cod, nephrops, plaice, saithe and whiting.

Figure 7.28 Fishing Intensity in the Argyll (Area of Search) (Scallop Dredge, Demersal – Mobile Gear, and Nephrops – Mobile Gear)

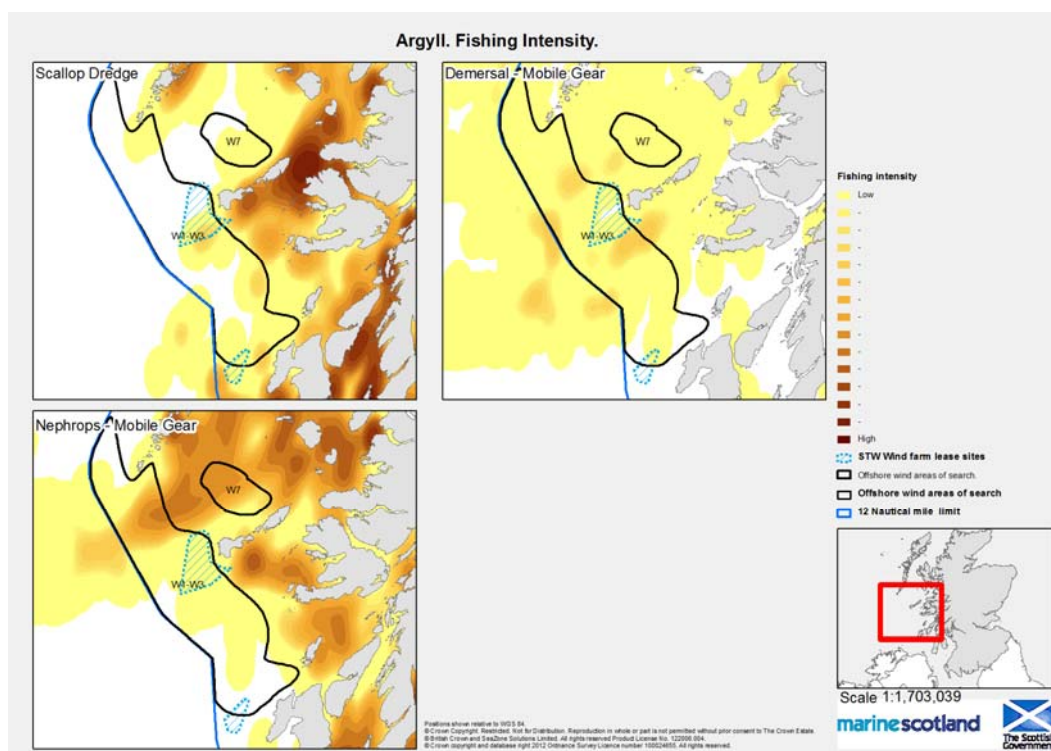


Figure 7.29 Fishing Intensity in the Argyll (Area of Search) (Pelagic, Demersal – Static Gear, Nephrops - Creels)

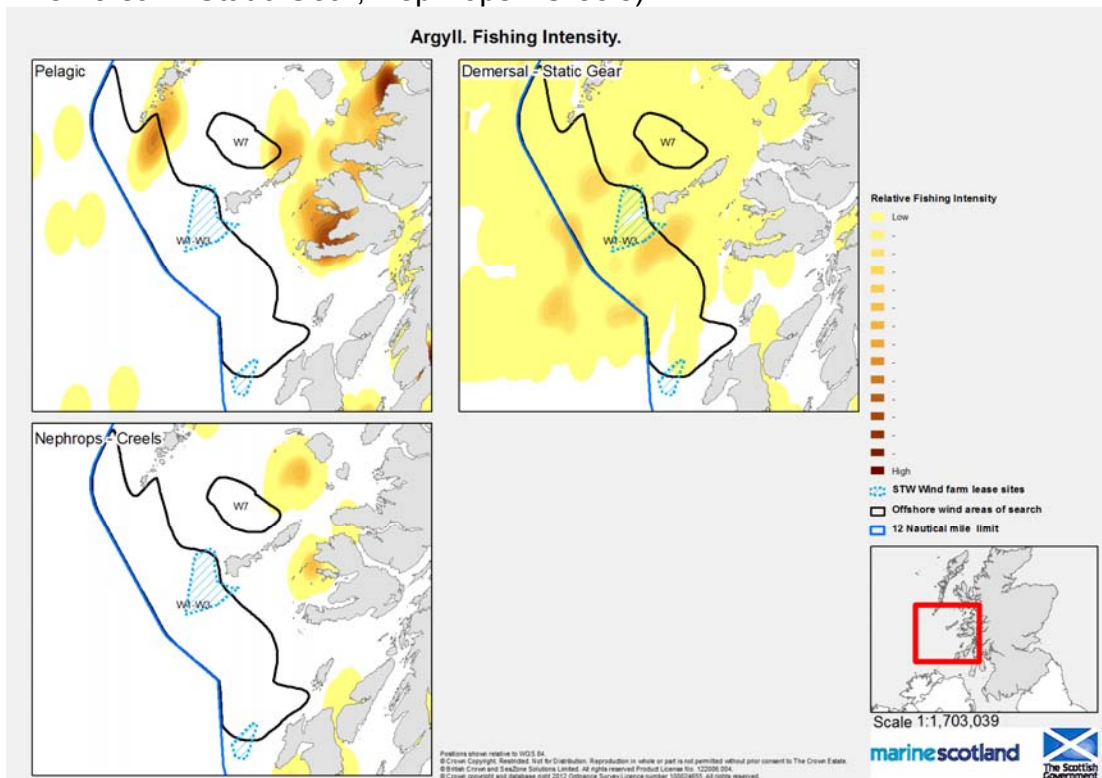


Figure 7.30 Fishing Intensity in the Argyll (Area of Search) (Brown Crab – Creels, Lobster – Creels, Squid)

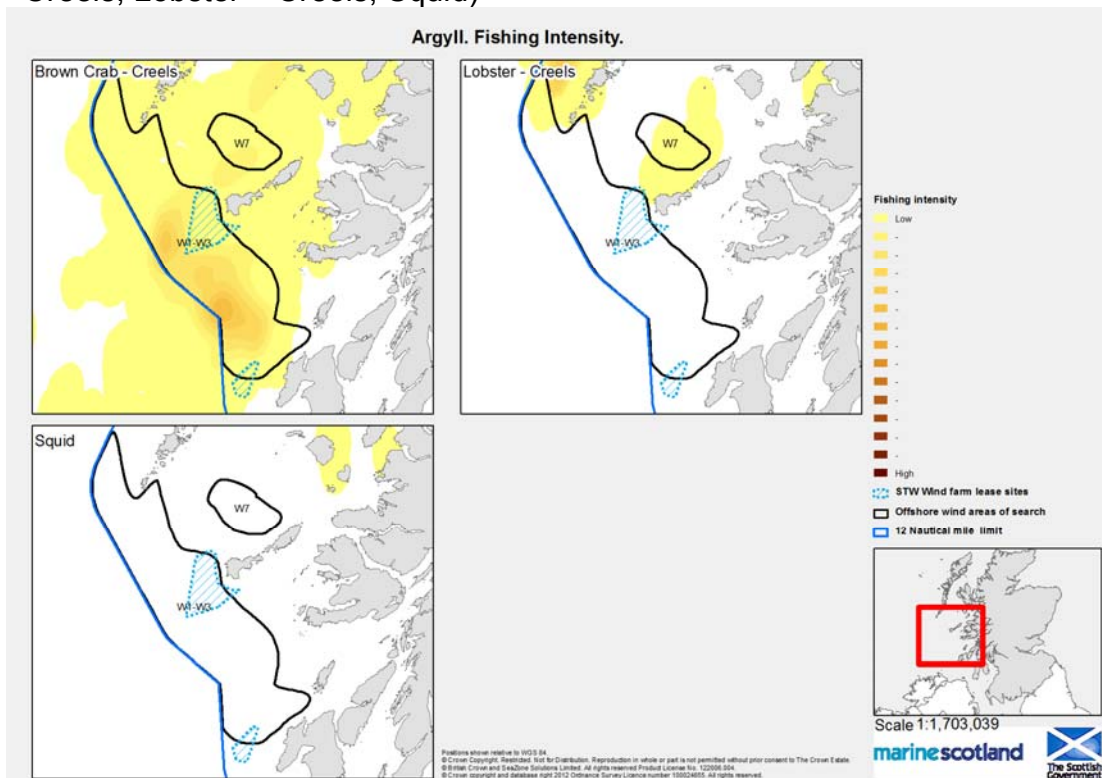


Figure 7.31 Inshore Fisheries in the Argyll (Area of Search) (Mobile Gears)

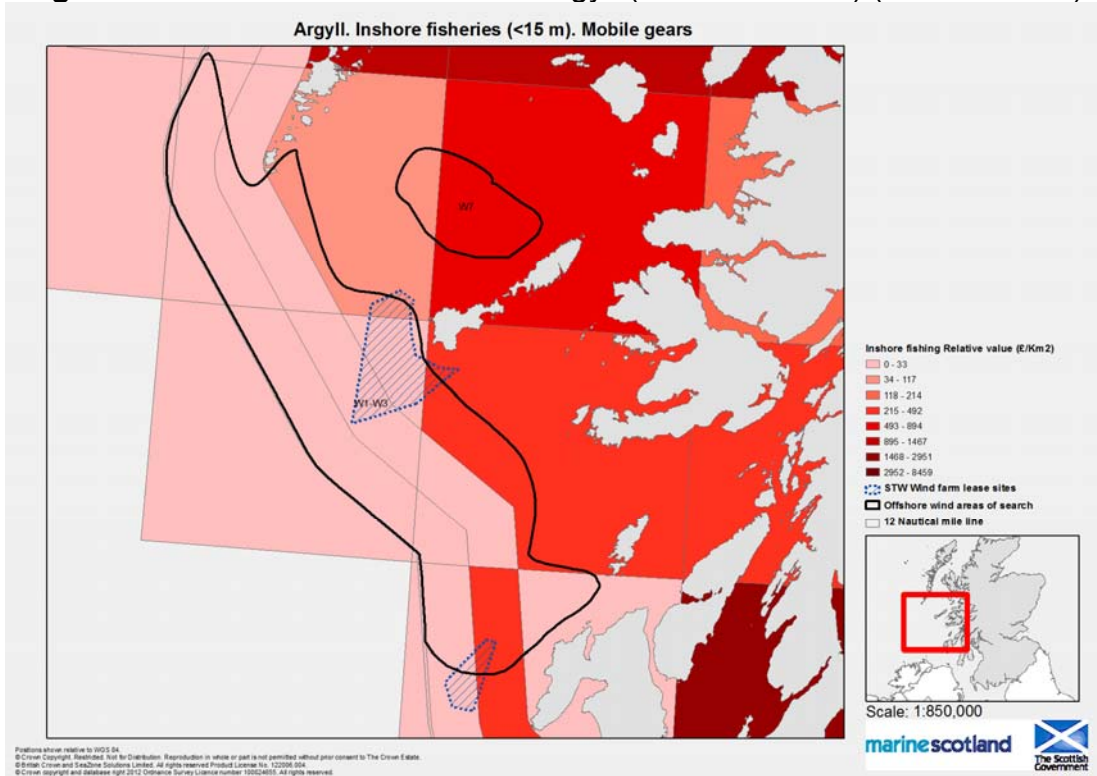


Figure 7.32 Inshore Fisheries in the Argyll (Area of Search) (Static Gears)

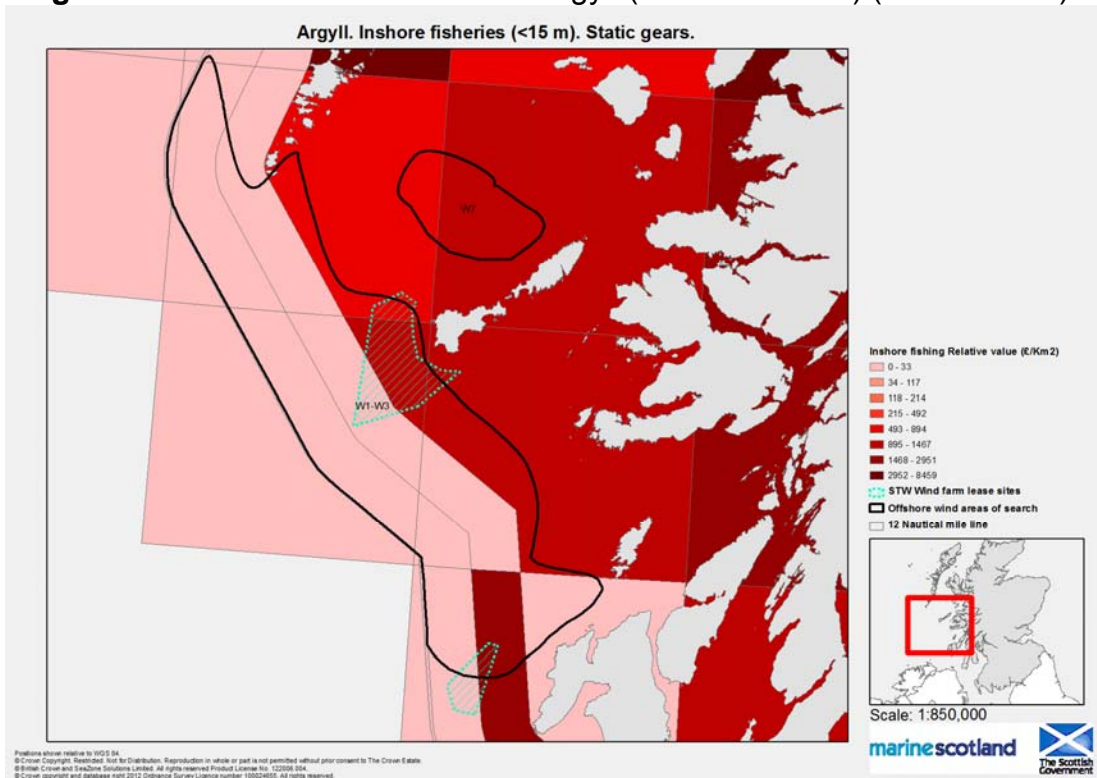


Figure 7.33 Fishing Intensity in the Kintyre (Areas of Search) (Scallop Dredge, Demersal – Mobile Gear, and Nephrops – Mobile Gear)

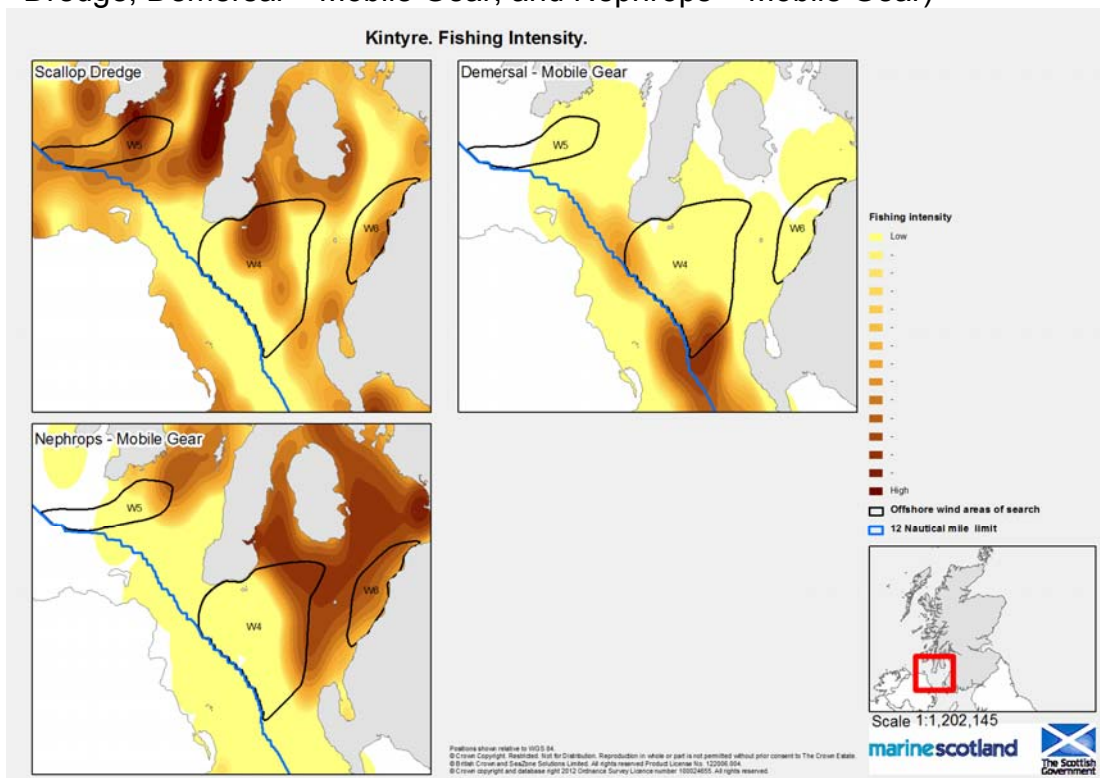


Figure 7.34 Fishing Intensity in the Kintyre (Areas of Search) (Pelagic, Demersal – Static Gear, Nephrops - Creels)

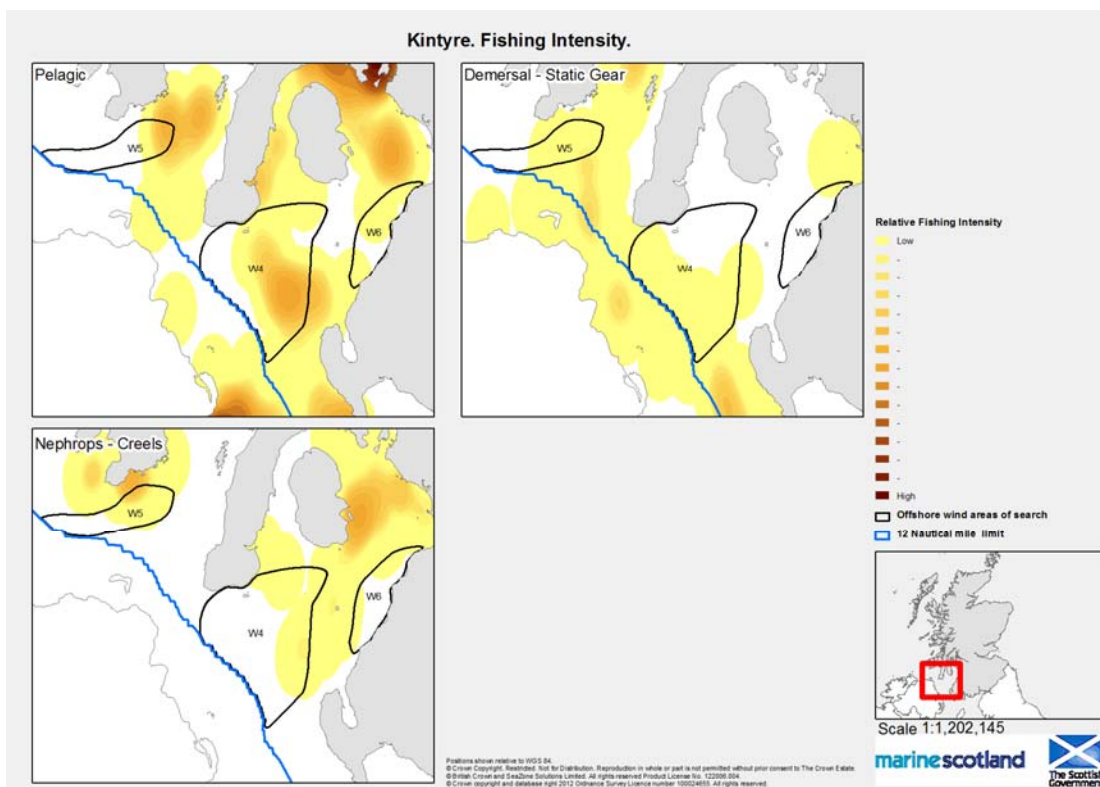


Figure 7.35 Fishing Intensity in the Kintyre (Areas of Search) (Brown Crab – Creels, Lobster – Creels, Squid)

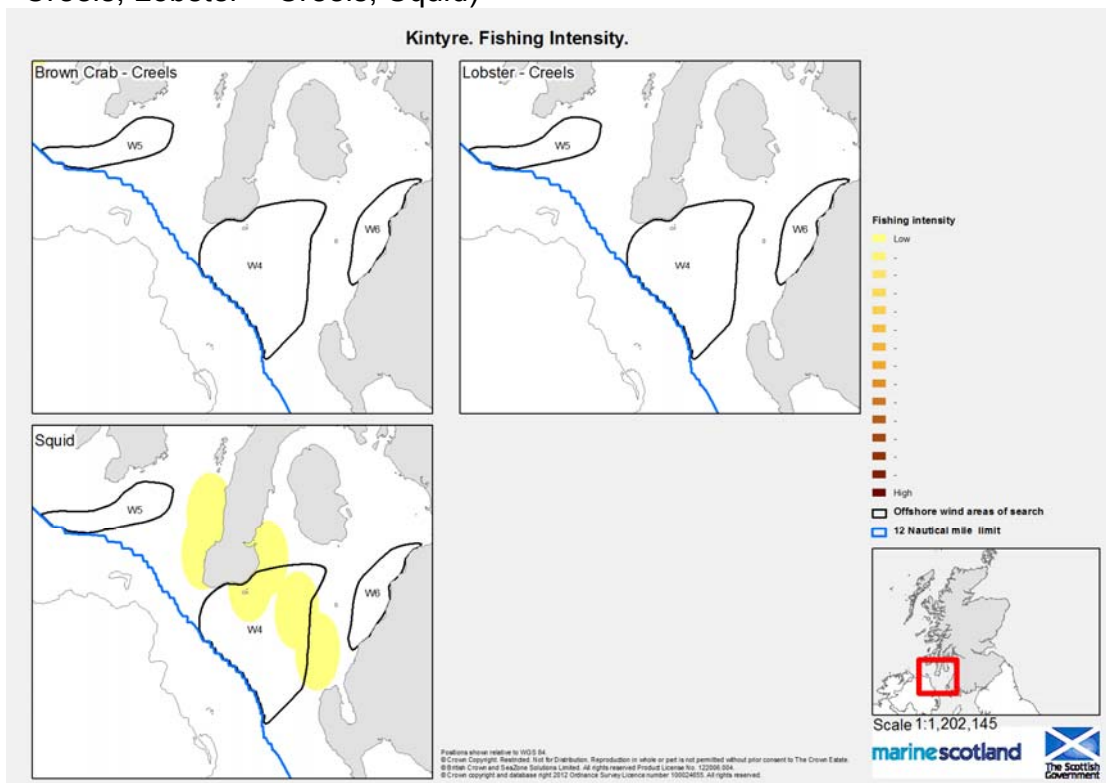


Figure 7.36 Inshore Fisheries in the Kintyre (Areas of Search) (Mobile Gears)

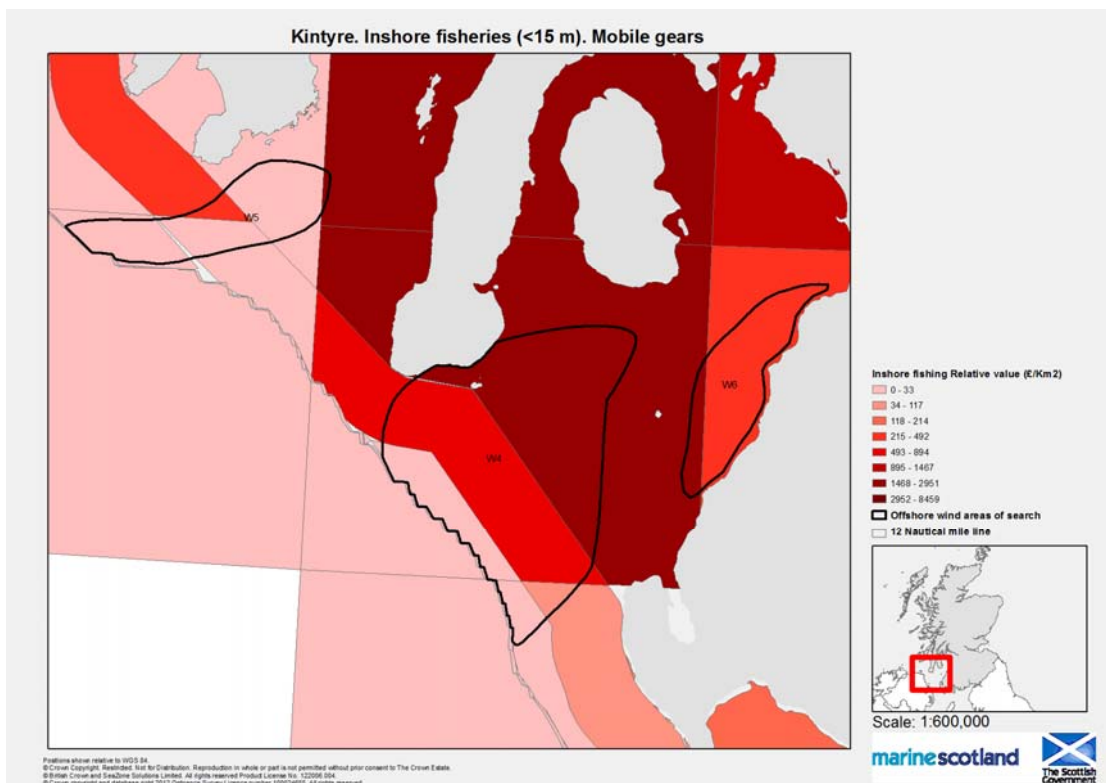
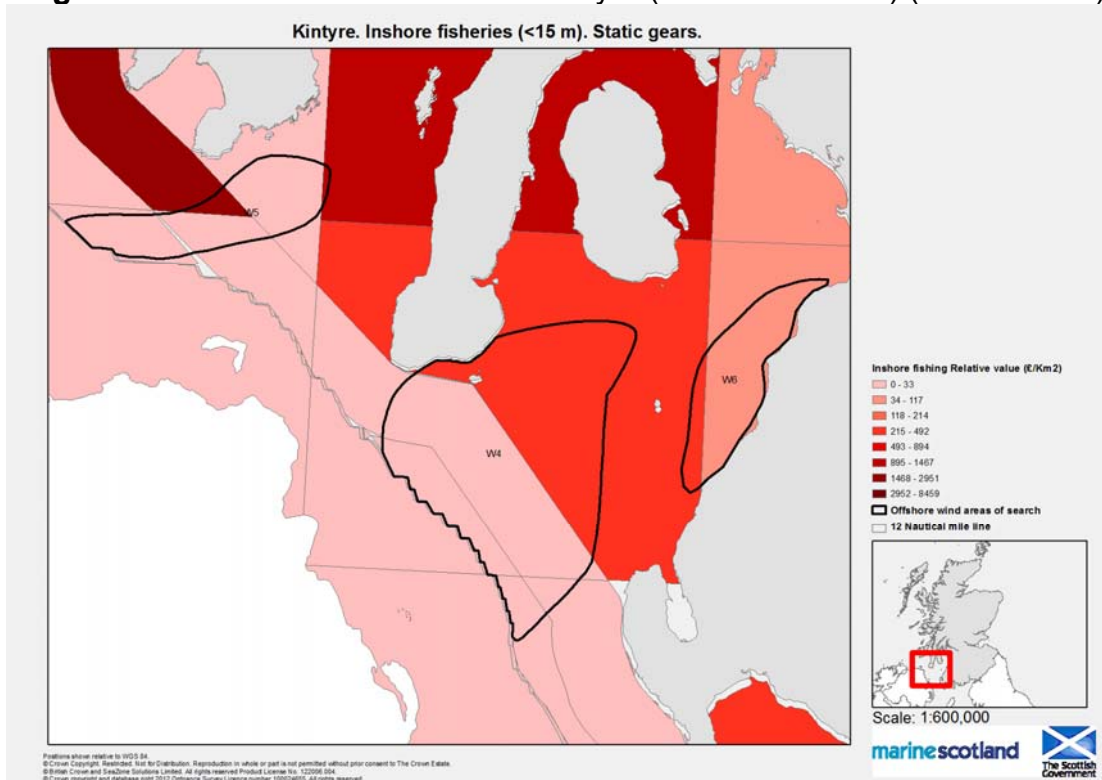


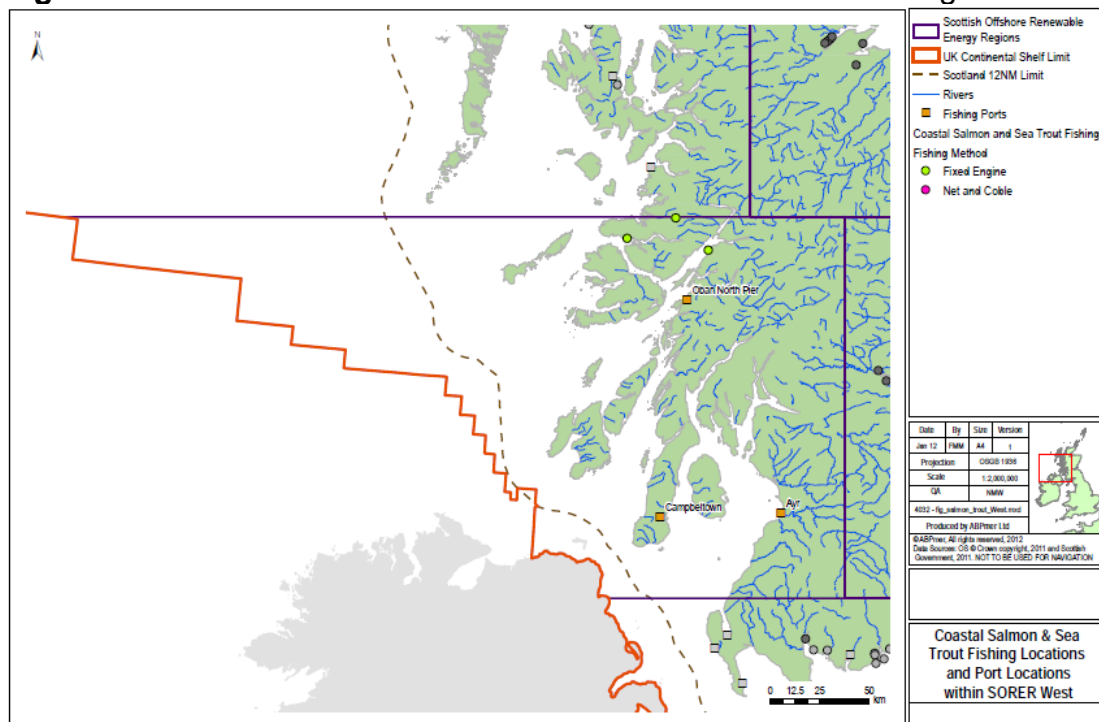
Figure 7.37 Inshore Fisheries in the Kintyre (Areas of Search) (Static Gears)



Wild Salmon and Sea Trout

- 7.8.10 There are three fixed engine netting sites in the North of the West SORER, but no net and coble sites (see Figure 7.38).
- 7.8.11 The main rod and line fishing rivers in this region are the Stinchar (salmon), Girvan, Doon (salmon), Ayr (salmon), Irvine, Clyde, Eachaig (sea trout), Add, Fyne, Awe (salmon), Orchy (salmon) and Aline. (Gray J., 2009).

Figure 7.38 Wild Salmon and Sea Trout activities in the West Region

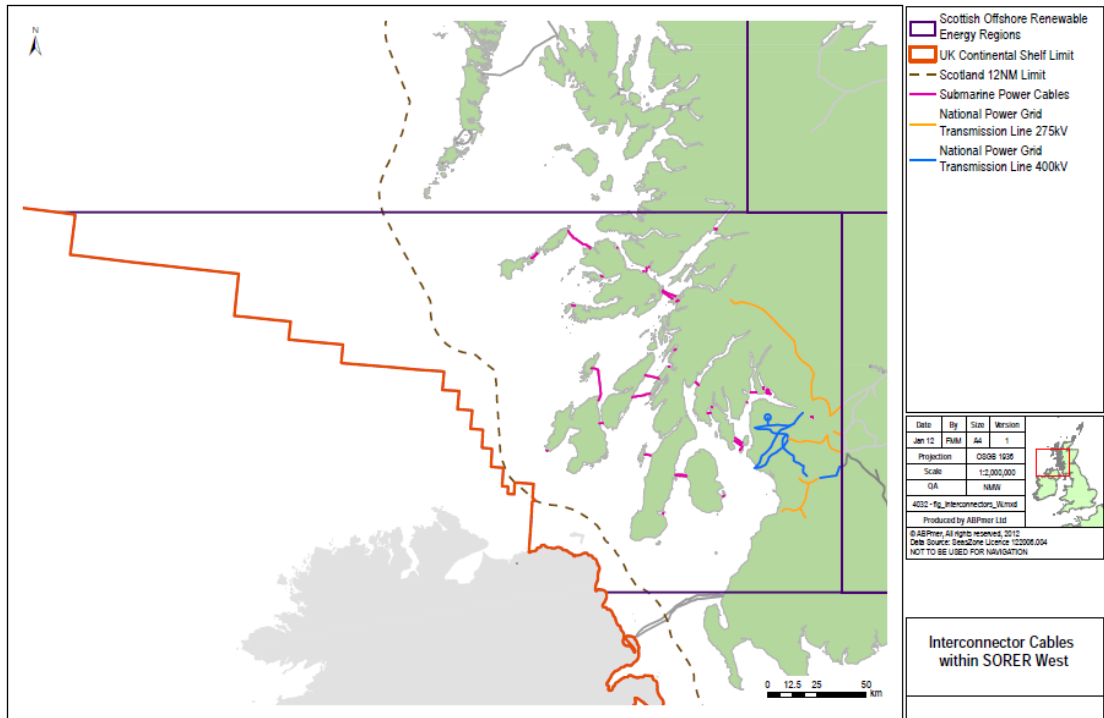


7.9 Infrastructure and Grid Provision

Existing

- 7.9.1 Hunterston B nuclear power station is located within this region, south of Largs in Ayrshire. The power station started generating in 1976, and is expected to be decommissioned in 2016. It has a net electrical output of 890MW. Also within the region is Cruachan pumped storage power station.
- 7.9.2 Numerous domestic subsea power cables exist within inshore waters in this region, connecting areas of the mainland on the West coast and connecting the mainland to islands off the West coast. See Figure 7.39.

Figure 7.39 Interconnector cables in the West Region



7.9.3 Figures 7.40 below provide an indication of the existing infrastructure for power connectivity within the Argyll and Kintyre Regions for Areas of Search W1-3,4,5,6,7.

Figure 7.40 Existing Infrastructure in the Argyll (Area of Search)

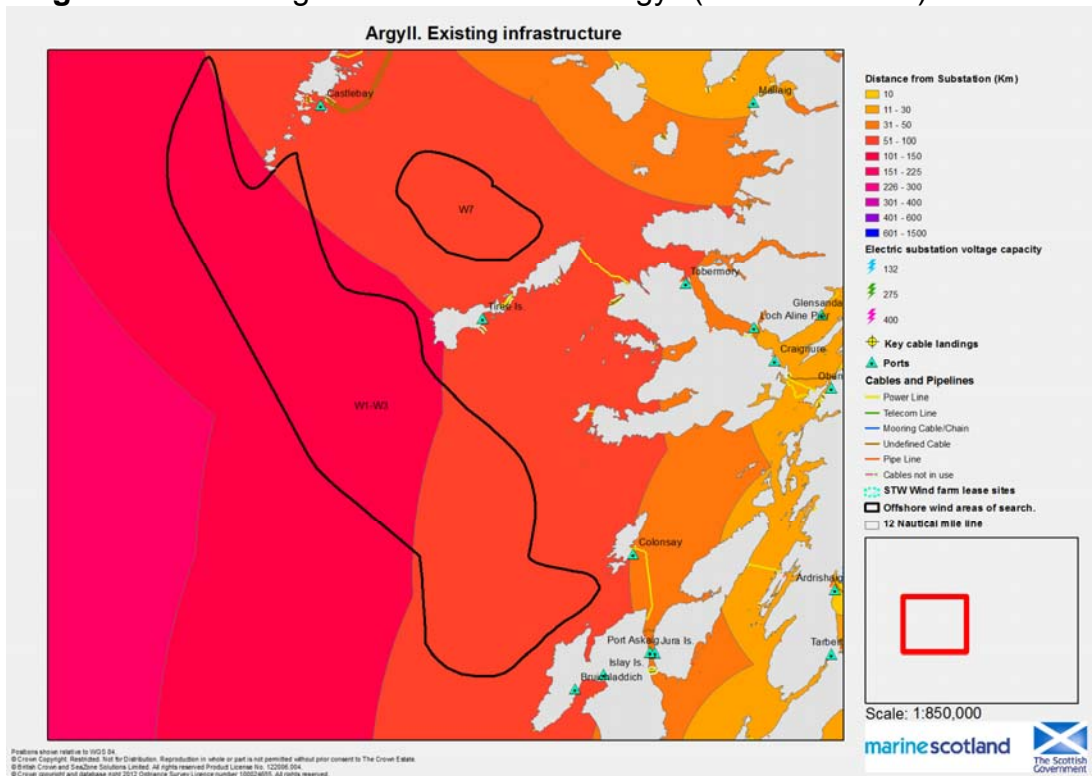
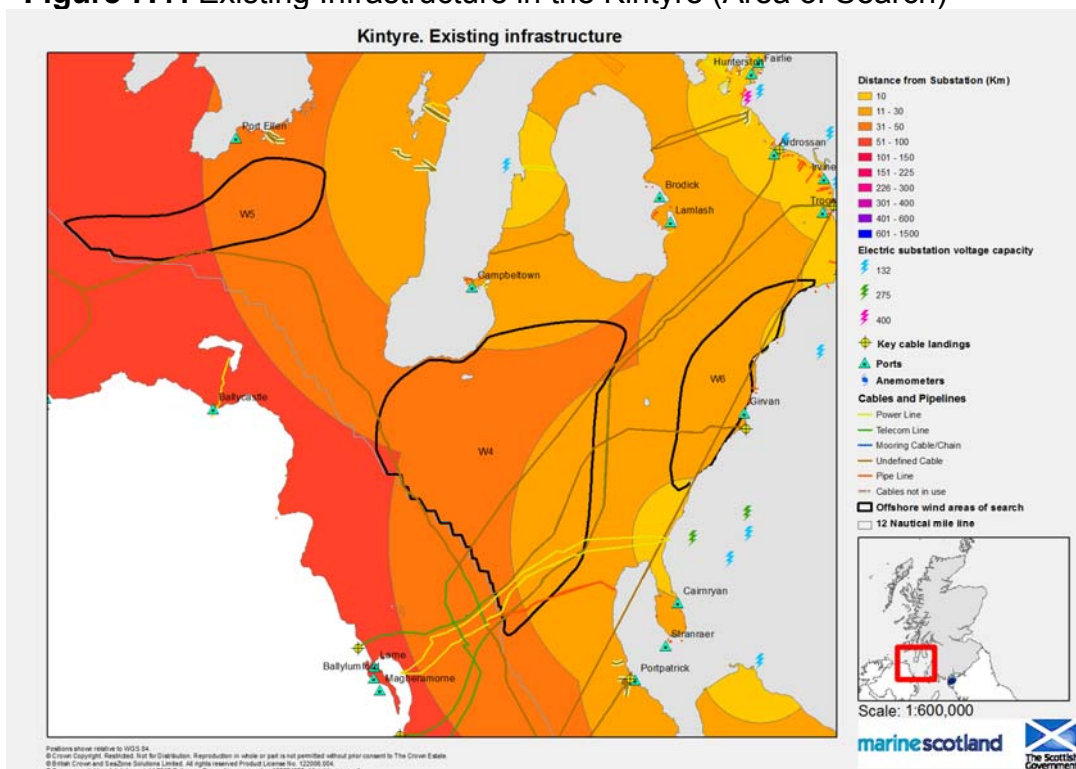


Figure 7.41 Existing Infrastructure in the Kintyre (Area of Search)

7.9.4 Employment in the electricity sector in the West Region can be estimated through looking at statistics from the ONS (2011) Business Register and Employment Survey.. Electrical installation has the greatest number of jobs out of the categories considered, whilst construction of utility projects for electricity and telecommunications has the least. It is likely that there are more jobs in the wider energy generation sector, for example, in relation to surveying, manufacture of components, etc. However, these codes are not included here to avoid overestimation of employment. Since both offshore wind and tidal generation are proposed, it is probable that this region will continue to see people employed in a range of roles in the energy sector. Indeed, employment may even increase.

7.9.5 The potential infrastructure and grid provision activities within the North West Region are:

- Possible link to ISLES project;
- Connect to SPT link – Western HVDC Hunterston to North Wales; and
- Connect via Kintyre to Hunterston.

Table 7.1 Current Stage of Planning for potential Infrastructure projects (West region)

Project	Current Status of Planning
ISLES Project	See previous
SPT link Hunterston to North Wales	See previous
Kintyre to Hunterston	<p>Assessed as a candidate national development in NPF2 and covered in principle in SEA. Included in ENSG but not subjected to environmental assessment Referred to in EGPS but not subjected to SEA.</p> <p>The project has been subject to a full environmental assessment which explored potential route corridor options. The preferred route is an overhead transmission line rebuild between Carradale substation and Cour Bay and a sub-sea cable route from Cour Bay to Portencross (Ayrshire), with an underground cable route from Portencross to Hunterston substation.</p>

7.10 Oil and Gas

7.10.1 There are no oil and gas related activities currently taking place within this Region.

7.11 Planning Issues

Ayrshire

7.11.1 The **Ayrshire Joint Planning Unit**, covering North and South Ayrshire, provided a detailed response to the consultation. It stated that the RLG should take into account the significant international, national and regional interests within the Clyde Estuary. It also referred to the Arran and Ailsa Craig National Scenic Areas, and contended that the scoping study does not appear to recognise these key areas.

7.11.2 The Joint Planning Unit explained that onshore wind farm guidance has been prepared for the area. It requires an assessment of existing and proposed windfarms and their visual impact on the coastal character of the region, but it was noted that the scoping does not consider this or take into account proposals for onshore development and preferred areas for development.

7.11.3 Aviation is also raised as an issue, and the need to safeguard and enhance capacity by avoiding impacts on air space, particularly flight paths, approaches to airports and radar sight lines. It therefore suggested that this

should be scoped into the RLG, noting the importance of sea approaches to Prestwick airport runway, the stacking area around Turnberry and areas with civil and defence interests associated with helicopter flights and marine traffic. This information has been set out in a windfarm radar safeguarding map.

- 7.11.4 Coastal ports are also raised, including Hunterston which is safeguarded as a major transshipment hub in the second National Planning Framework. Local ports at Ayr, Troon and Ardrossan are also major national and international and exit points to the transport network and thus important to the wider regional economy. Approaches to these ports should be safeguarded. It Joint Planning Unit therefore stated that future growth in coastal traffic should be recognised and scoped into the guidance.
- 7.11.5 In addition to natural heritage designations outlined above, the response also highlighted the importance of the historic environment in defining sense of place and distinctiveness. It therefore felt that the historic environment should be taken into account within the development of the RLG, including consideration of nationally significant designed landscapes around Culzean and Brodick. Cultural heritage issues have also been considered further under the relevant section above.
- 7.11.6 The response noted that tourism makes a significant contribution to the economy of Ayrshire and has significant potential for growth particularly sailing and golf, and planning therefore safeguards key assets from inappropriate development. In Ayrshire this includes internationally recognised golf courses, major sailing and recreational locations, designated sensitive landscapes, and isolated and undeveloped coastal shorelines and local communities sensitive to change. Key resources identified were: golf courses at Troon, Prestwick and Turnberry, Clyde Muirshiel Regional Park, regionally significant coastal sensitive landscape areas identified within the development plan and national Scottish Trail Routes (Arran and Ayrshire Coastal Trails).
- 7.11.7 Finally, the Joint Unit highlighted the need to avoid interference with electronic communication media, including television, radio and micro wave links. This can be achieved by measures such as turbine siting and discussion with relevant operators.
- 7.11.8 Providing a more local perspective, **North Ayrshire Council** provided references to a range of relevant policies within the North Ayrshire, and Isle of Arran Local Plans. It also outlined the importance of strategic level Supplementary Planning Guidance produced by the joint structure planning unit (2009) and proposed LDP policies (April 2011). Key policies relate to development proposals at Hunterston, including recognition within the National Renewables Infrastructure Plan, as a location for improved grid connections, as a test site for wind, and development of a multifuel power station (to be determined by Scottish Ministers following refusal by the Council). The latter development will include a sub-sea CO₂ pipeline. The response also reflected issues raised by the Joint Planning Unit relating to

radar constraints, recreational interests (sailing) and fishing interests and noted that these are relevant to west coast areas identified in the scoping study. It also emphasised the need to take into account environmental and heritage protection policies, acknowledging that these should be increasingly taken into account as the areas are refined.

Renfrewshire

- 7.11.9 Renfrewshire Council also responded to the consultation, noting its links to the coast via the Rivers Cart and Clyde. It emphasised the opportunities for economic development in key locations to support the renewables sector and secure associated investment.

Argyll and Bute

- 7.11.10 The Argyll and Bute Proposed LDP is currently being prepared. The Main Issues Report has been subjected to public consultation.

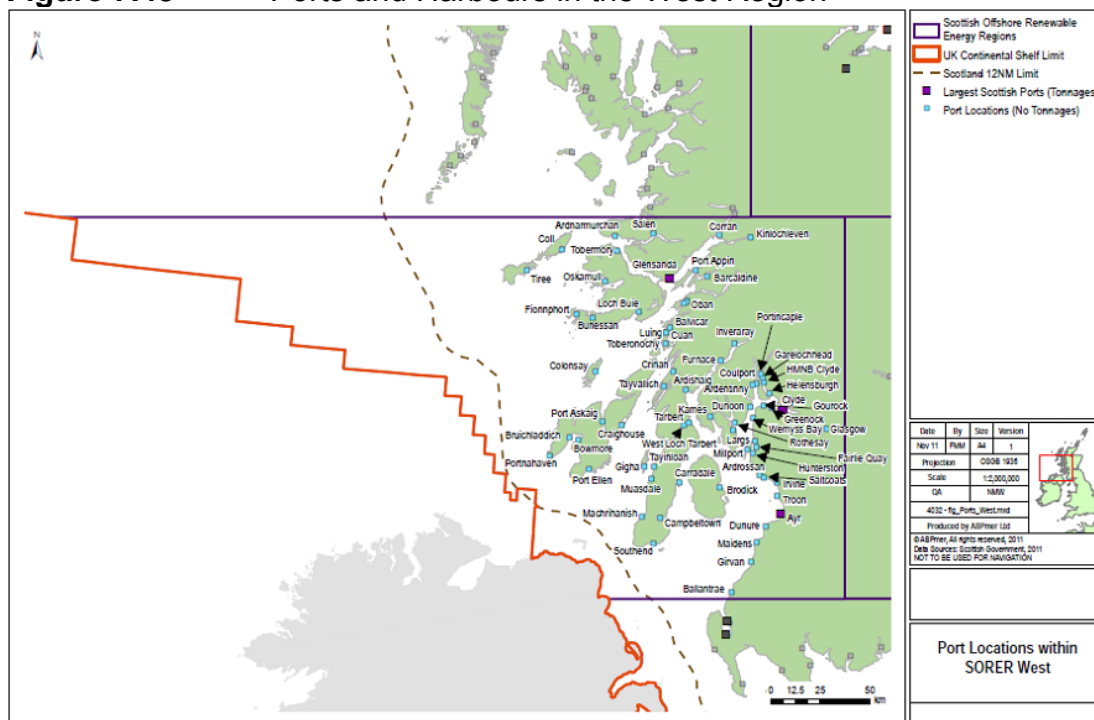
- 7.11.11 The MIR explained that, as a spatial framework for onshore wind, the existing Local Plan provides guidance on areas of search. More recently, a landscape wind energy capacity has been produced. This includes a detailed assessment of scope for wind developments, based on characterisation of landscapes and an assessment of the sensitivities of different areas. This reflects on existing developments and considers future opportunities within the specific context of Argyll and Bute's landscapes. Detailed recommendations are made for different parts of the area, which include siting developments away from coasts where cumulative effects on views from the sea, for example, are expected to arise. This guidance is therefore relevant to further consideration of RLG areas within the SEA process.

- 7.11.12 The MIR notes the significant potential for offshore wind farms, tidal and wave energy. The Council is of the view that it is well placed to take advantage of these resources, and that it has been involved in taking forward wave and tidal opportunities with Scottish Power Renewables. Reference is made to the areas for offshore wind development identified by the Crown Estate at Islay and Tiree and the Council highlights associated opportunities for manufacturing, maintenance, operations, research and supply side services. As a result, it anticipates a supportive framework to realise these opportunities within the Proposed Plan. 'Spheres of Influence' and Key Ports are identified for future investment opportunities arising from these developments. The LDP is expected to play a role in safeguarding land for development and identifying community land and infrastructure improvements. Campbeltown / Machrihanish is a national priority for investment, and work in partnership with the Crown Estate will be taken forward on Tiree with the community to develop a masterplan that may be issued as Supplementary Guidance.

7.12 Ports and Harbours

- 7.12.? The N-RIP Stage 2 report identified Machrihanish / Campbeltown as a Phase 1 site for further manufacturing and operation / maintenance and Hunterston as a Phase 1 site with opportunity for integrated manufacturing.
- 7.12.? The existing site at **Machrihanish** airport is already being utilised. Improvement works are complete at **Campbeltown** to provide a new deep water quay and there are nearby sites available which could be used as a laydown area to support future operations and maintenance works. Transport improvements are complete to upgrade road links between Machrihanish and Campbeltown.
- 7.12.? **Hunterston** is the preferred location for the establishment of a Test Centre of national significance for offshore wind turbines, and has development opportunities for fabrication to support the wave and tidal sectors. The N-RIP Stage 2 report anticipated that, in addition to use of the existing site, there would be land reclamation, construction of a new deep water quay and possible use of additional land.
- 7.12.? North Ayrshire Council set out key development proposed at Hunterston in its response to the scoping consultation, noting the proposal for a multifuel power station which is designated as a National Development within the second National Planning Framework. The Ayrshire Joint Planning Unit noted the multiple uses of the site and its importance as a transshipment hub.
- 7.12.? Other ports within Ayrshire raised by the Joint Planning Unit included **Ayr**, **Troon** (ferry service to Larne) and **Ardrossan** (ferry service to Arran). These were noted as major national and international exit points to the transport network and therefore important to the regional economy. As a result, safeguarding of approaches to these ports and consideration of future growth in coastal traffic was recommended. Ayr and Troon were considered as medium term options within the N-RIP.
- 7.12.? Other key ports and harbours within the region include:
- **Greenock** – the main container port for Glasgow and a port of call for cruise ships;
 - **Oban** – a key fishing harbour; and central hub for ferry services to the Inner and Outer Hebrides. Nearby, **Barcaldine** is the home of the Marine Resource Centre, a commercial development campus for marine resources;
 - **Dunoon** – with two harbours accommodating a passenger and vehicle ferry service from Gourock; and
 - **Rothesay** – serving the Wemyss Bay - Rothesay ferry, a key fishing harbour and recreational boating destination.

Figure 7.43 Ports and Harbours in the West Region



7.12.? In addition there are numerous smaller harbours and marinas supporting commercial and recreational fishing activities, yachting and recreation throughout this region. This includes key ports on the numerous islands across the region, which are essential for servicing lifeline ferry services.

Table 7.2 Ports and Harbours in the West Region

Port	Operator	Type
Ardentinny	Ardentinny Hotel - landing pontoon only	Private
Ardnamurchan		unknown
Ardishaig	British Waterways Scotland	Other
Ardrossan	Clydeport	Private
Ardyne	Lighthouse Caledonia	Private
Ayr	Associated British Ports	Private
Ballantrae		Local Authority
Balvancar		unknown
Barcaldine	Marine Resource Centre Ltd	Private
Bowmore	Bowmore Harbour Association	Private
Brodick		Other
Bruichladdich		Local Authority
Buessan		Local Authority
Campbeltown	Argyll and Bute Council	Local Authority
Carradale		Local Authority
Coll		Private
Colonsay		Private
Corran	Highland Harbours	Local Authority
Coulport		MOD
Craighouse		Local Authority
Crinan		Private
Cuan		Local Authority
Dunoon	Argyll and Bute Council	Local Authority
Dunure		Local Authority
Fairlie Quay	Holt Leisure Group	Private

Fionnphort	Caledonian MacBrayne	Local Authority
Furnace		unknown
Garelochhead	Ministry of Defence??	unknown
Gigha		Local Authority
Girvan	South Ayrshire Council	Local Authority
Glasgow	Clydeport	Private
Gourock	Caledonian MacBrayne	Private
Greenock	Clydeport	Private
Glensanda		Private
Helensburgh		Local Authority
HMNB Clyde	MOD	MOD
Hunterston	Clydeport	Private
Inveraray		Private
Irvine	Irvine Harbour Co	Private
Kames		unknown
Kinlochleven	Alcan	Private
Largs	Caledonian MacBrayne	Private
Loch Buie	Now a complete ruin	unknown
Luing		Local Authority
Machrihanish		unknown
Maidens		Local Authority
Millport	Caledonian MacBrayne	Other
Muasdale		unknown
Oban NLB Base	Northern Lighthouse Company	Private
Oban North Pier	Argyll and Bute Council	Local Authority
Oban Railway Pier	Caledonian MacBrayne	Other
Oskamull	The Howard family	Private
Port Appin	Argyll and Bute Council	Local Authority
Port Askaig	Argyll and Bute Council	Local Authority
Port Ellen	Caledonian MacBrayne	Other
Portincaple		unknown
Portnahaven		unknown
Rothesay	Argyll and Bute Council	Local Authority
Salen	Mark and Jan Drury	Private
Saltcoats		Private
Southend		unknown
Tarbert	Tarbert (Loch Fyne) Harbour Trust	Trust
Tayinloan		Local Authority
Tayvallich		Private
Tiree		Private
Tobermory		Private
Toberonochy		Private
Troon	Associated British Ports	Private
Wemyss Bay	Caledonian MacBrayne	Other
West Loch Tarbert		Local Authority

7.12.? In 2009 there were 7,000 people in full time employment in these sectors, which had reduced to 6,500 people by 2010. There are also over 2,000 people who are in part-time employment. Over 53% of these are employed in building and repairing of ships or boats, this industry is focused on the Clyde (EKOS, 2008). There is no available data on the value of this industry to the economy of the region. This information identifies the employment in industries associated with ports and harbours, and should not be interpreted as direct employees of ports and harbours (although some may be working in this capacity) but as associated industries, often established on port estates.

7.13 Recreation

Recreational Angling

- 7.13.1 The Scottish Sea Angling Conservation Network's (SSACN) Offshore Wind SEA consultation response stated that Loch Etive and Sunart and Clyde are regions that are used extensively for sea angling. Although the Firth of Clyde has relatively poor fish stocks and is not capable of supporting regular sea angling charter activity, the local population size means there are reasonable numbers of local shore anglers who rely heavily on seasonal fish stocks such as mackerel. Own boat and charter boat angling is popular at other locations on the West coast of Scotland where there are a number of excellent sheltered lochs enabling safe comfortable fishing (Radford et al, 2009).
- 7.13.2 Radford et al (2009) estimated the sea angling activity and economic value in eight regions of Scotland. Two of these regions, Argyll and Lochaber and Glasgow and West, fall roughly within the West Region, but also incorporates the Southern part of the North West Region, hence the values may result in a slight overestimate of economic contribution.
- 7.13.3 The total estimated regional sea angling activity and expenditure within these two regions is £22.6m in Argyll and Lochaber and £24.1m in Glasgow and West with approximately 525 people employed in each area. Compared to other regions in the Radford et al (2009) study, Glasgow and the West had the greatest number of adult resident sea anglers (23,548) and the greatest number of angler days (269,783).

Table.7.3 Estimated Regional Sea Angling Activity and Expenditure in West Region

Region	No. Resident Sea Anglers	Annual Sea Angler Days Spent in Region	% of total Activity Undertaken on the Shore	Total Annual Sea Angler Expenditure (£M)	% of total Expenditure Spent on Shore Angling	Number of Jobs Supported
Argyll and Lochaber	5825	252615	47%	22.6	40%	524
Glasgow and West	23548	269783	38%	24.1	36%	523

(Source: Radford et al, 2009)

- 7.13.4 The Firth of Lorne and the Sound of Mull has become the centre for common skate angling contributing over £15 million per year to the local economy. Lochs Sunart and Etive attract vast numbers of shore and boat anglers seeking spurdog, and this fishery is estimated to be worth £15 million per year (Scottish Sea Angling Conservation Network, 2008). The SSACN hold a spurdog tagging event in this area and estimate that the event held in November 2010 was worth £28,000 to the local economy (Scottish Sea Angling Conservation Network, 2010b).

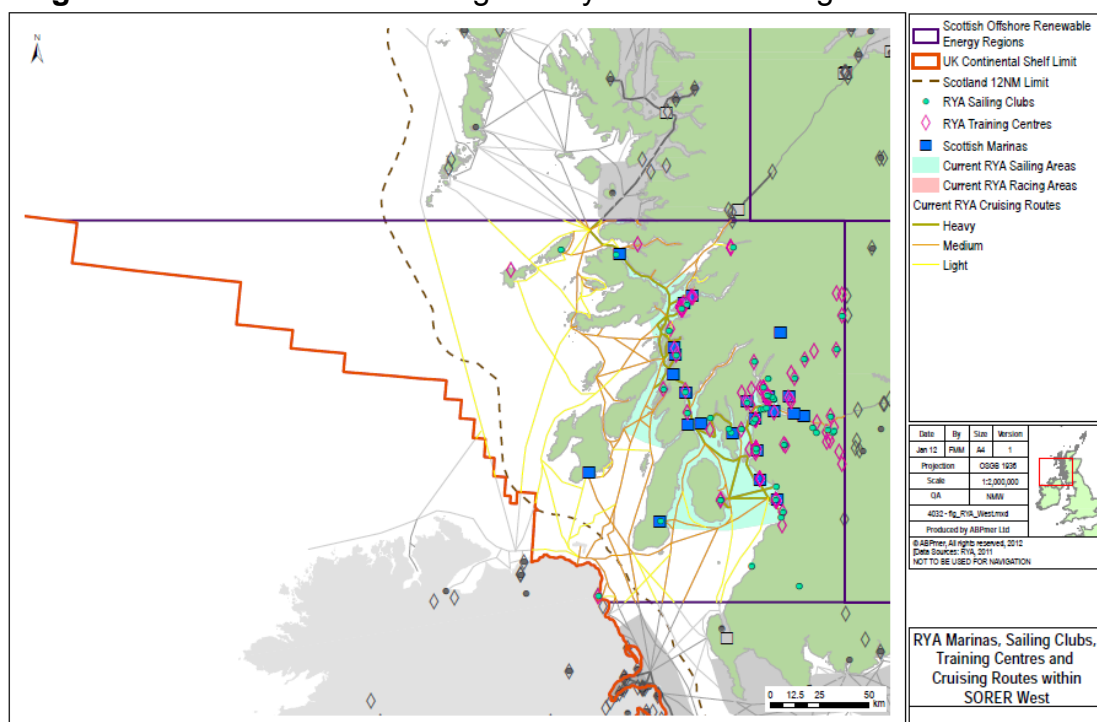
Recreational Boating

- 7.13.5 The West of Scotland is an internationally important yachting destination (RYA Scotland consultation response). Baxter et al (2011) describes the

distribution of sailing as being concentrated along the West coast (comprising parts of the West and North West Region) where the RYA Atlas of recreational boating indicates there are heavy recreational cruising routes 40 and several 200+ berth marinas.

7.13.6 Sailing activity in the West Region is shown in Figure 7.43. The figure highlights that recreational use is most concentrated near the West coast within the sounds of the Inner Hebrides. Heavy recreational use is made of the Sound of Mull, the Firth of Lorne, the North of the Sound of Jura and the Crinan Canal. Heavy use is also made of cruising routes in the Sound of Luing, Seil Sound, Shuna Sound and Loch Melfort and of a route from the Crinan Canal, South through Loch Fyne and the Firth of Clyde via the Kyles of Bute and South of the Isle of Bute. Heavy usage cruising routes also exist between Arran and the mainland (Baxter et al., 2011). Light and medium usage cruising routes connect these heavy routes with the Inner and Outer Hebrides (note the latter falls within the North West Region).

Figure 7.43 Recreational boating activity in the West Region



7.13.7 Light usage cruising routes are present off Tiree and a 'light' route from the Firth of Lorne to the coast of Tiree North of Hynish. Another 'light' route exists from near Kintra on Mull through the Gunna Sound (Scottish Power Renewables, 2010). A light usage route passes off Islay and medium usage routes exist off the Kintyre coast and around the Mull of Kintyre. It should be noted that the RYA UK Recreational Boating Atlas highlights the fact that many lightly used routes are the only routes available and therefore have considerable local importance.

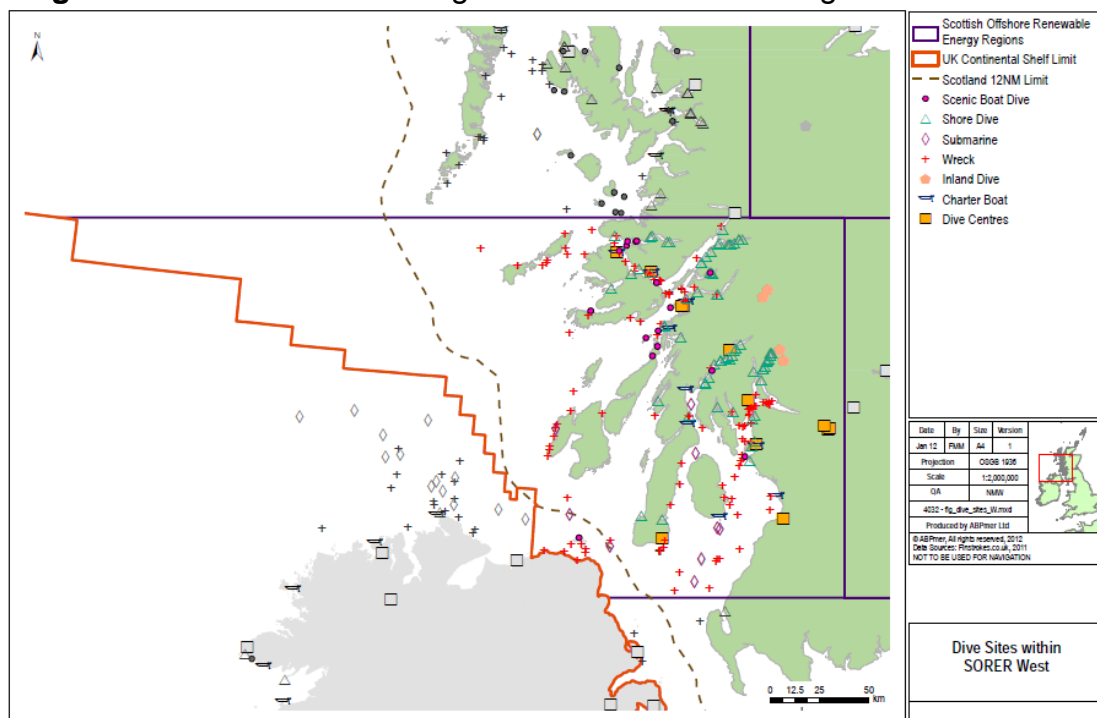
7.13.8 The Clyde and Irish Sea Area has an estimated GVA of around £44 million pounds. This area has around 3,333 pontoons and 2,038 moorings. The

West Coast of Scotland has a GVA of around £39 million with 1,030 pontoons and 2,637 moorings.

Scuba Diving

- 7.13.9 The West Region is a popular scuba diving area. Dive spots are widespread through this region with a particularly high numbers of sites through the Firth of Clyde, Sound of Mull and Loch Linnhe.

Figure 7.44 Recreational diving activities in the West Region



Sea Kayaking and Small Boating

- 7.13.10 Dinghy sailing is a popular activity in the sheltered lochs and bays of the West Region with a high density of coastal dinghy sailing clubs found in the Firth of Clyde and Clyde River (Figure 7.45). Sea kayaking is undertaken throughout the West Region with popular locations including the Firth of Lorn, Gulf of Corryvreckan, Sound of Jura and upper Firth of Clyde (Land Use Consultants, 2007) (Figure 7.46).

Figure 7.45 Dinghy Sailing Clubs in the West Region

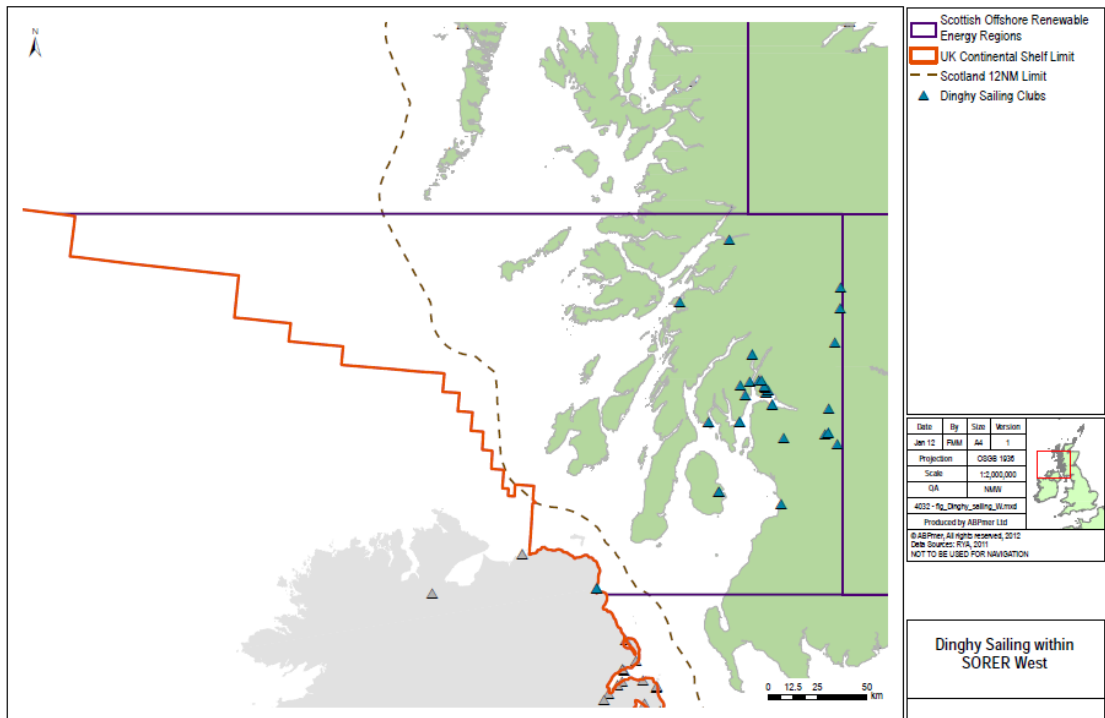
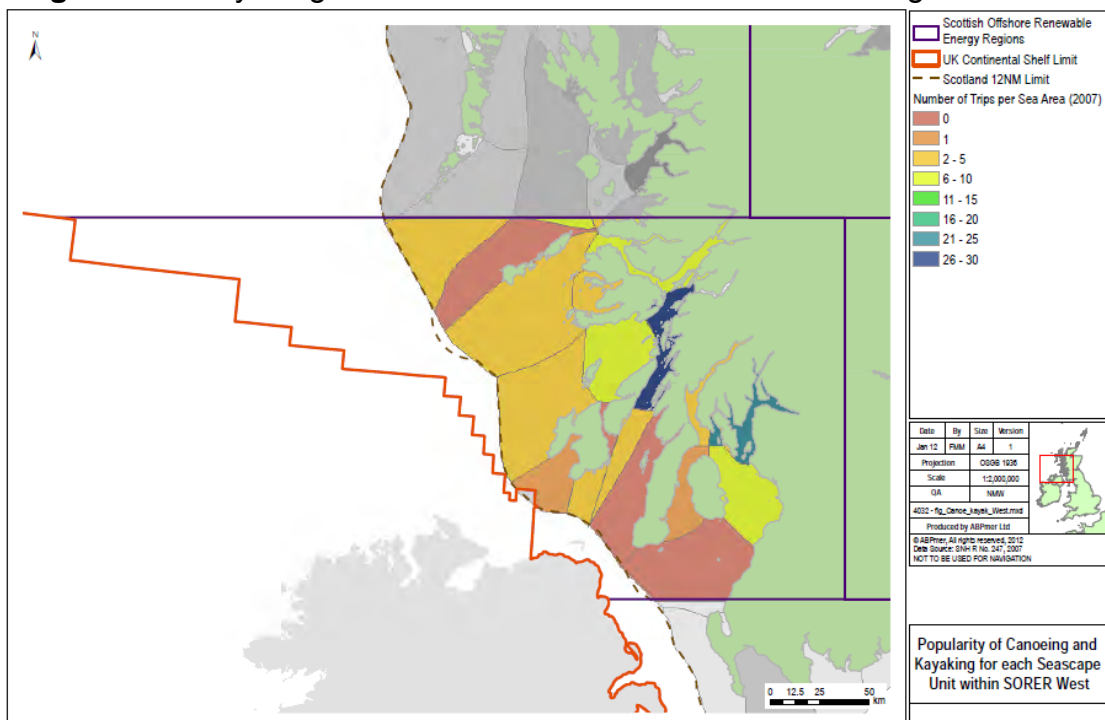


Figure 7.46 Kayaking and Small Boat Activities in the West Region



Surfing and Wind Surfing

7.13.11 The West coast of Scotland and the Hebrides are exposed to swell waves generated in the Atlantic Ocean and offer a range of West to North facing beach and reef breaks along the coasts of the Mull of Kintyre, Isles of Islay and Tiree (SAS, 2009). Some of these spots are considered to be of very high quality, although the remoteness of the locations means that they are uncrowded most of the time (SAS, 2009). A large number of windsurfing locations are also present in this region. The SAS (2009) report maps 17 surfing locations on Tiree, Islay and Kintyre and the Windsurf magazine ‘beach guide’ maps 21 locations along the Ayrshire coast and on Tiree, Islay and Kintyre.

Figure 7.47 Surfing and Windsurfing locations in the West Region

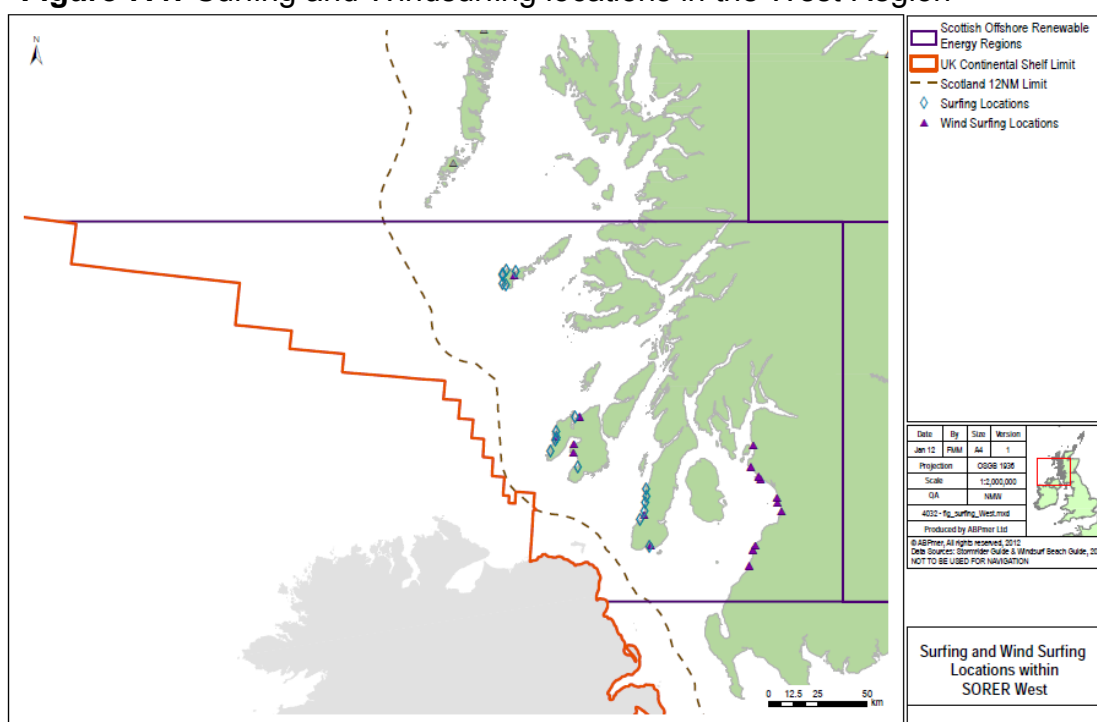


Table.7.4 Key Surfing and Windsurfing Locations in the West Region

West Coast Location	Surf Location	Windsurf Locations
Ayrshire coast		Girvan
		Tumberry
		Maidens
		Prestwick
		Troon beach (North and South)
		Ardrossan
		Helensburgh
		Largs
		Sailcoats

Tiree	Balephetrish	Crossapol
	Balevullin Bay	Gott Bay
	The Hough	Balevullin Bay
	The Maze	The Maze
	Port Bharrapol	The Green
	Balephuill	The loch
Islay	Ardnave Bay	Loch Indaal
	Saligo Bay	Tragh baile aonghais
	Machir Bay	Machir Bay
	Laggan Bay	Laggan Bay
	Lossit Bay	
Kintyre	Caravans	Southend
	Macrihanish	Macrihanish
	Middle Beach	
	Westport	
	Graveyards	
	Dunaverty	

(Source: Based on SAS, 2009 and the Windsurf Magazine 'beach guide' 2011)

7.13.12 Tiree has a niche in outdoor activities. The Scottish Government's analysis of the responses to its Offshore Wind Draft Plan and SEA stated that 60 to 70% of the islands tourism is based on water sports such as surfing and kite surfing. In particular the island is a very important area for windsurfing. The UK's national windsurfing championship, the Tiree International Wave Classic, which is held annually in October, is of significance both for the sport and the local economy (UKMMAS, 2010).

Areas of Search

7.13.13 Figures 7.48 and 7.49 below identify the recreational activities taking place in the Argyll and Kintyre Areas of the West Region for Areas of Search W1 and W3-W7.

Figure 7.48 Recreational activity in the Argyll (Area of Search)

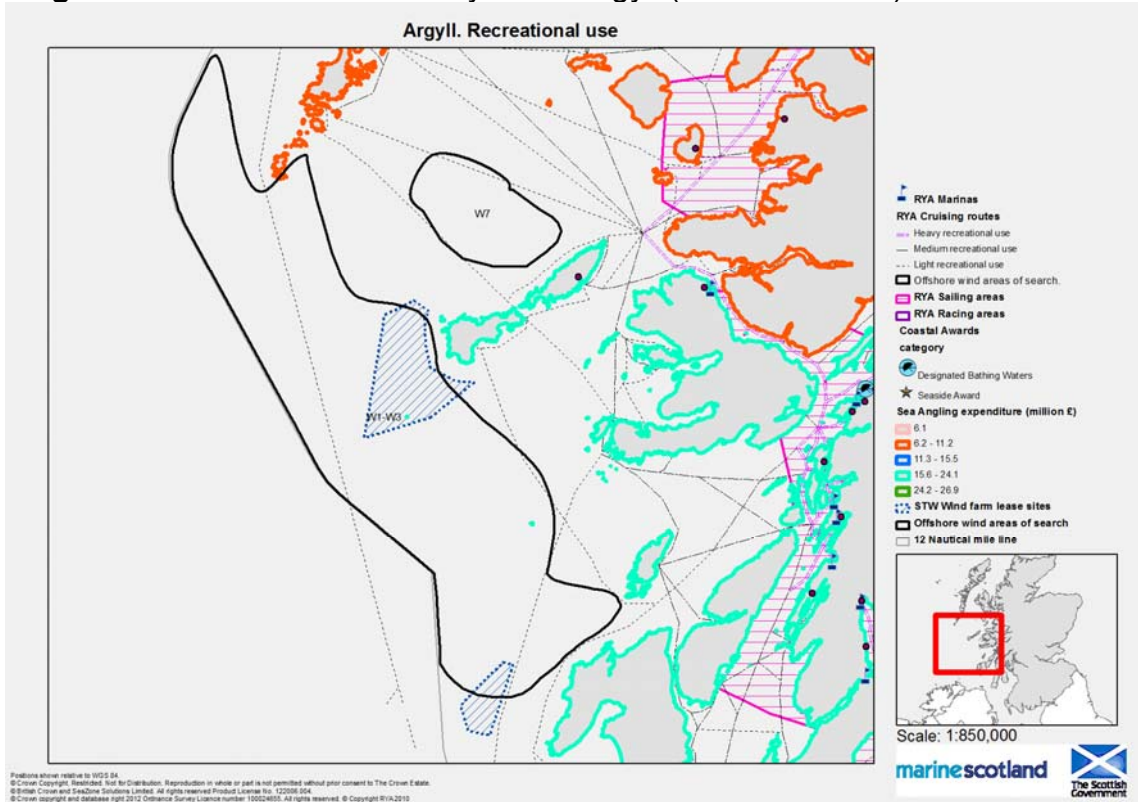
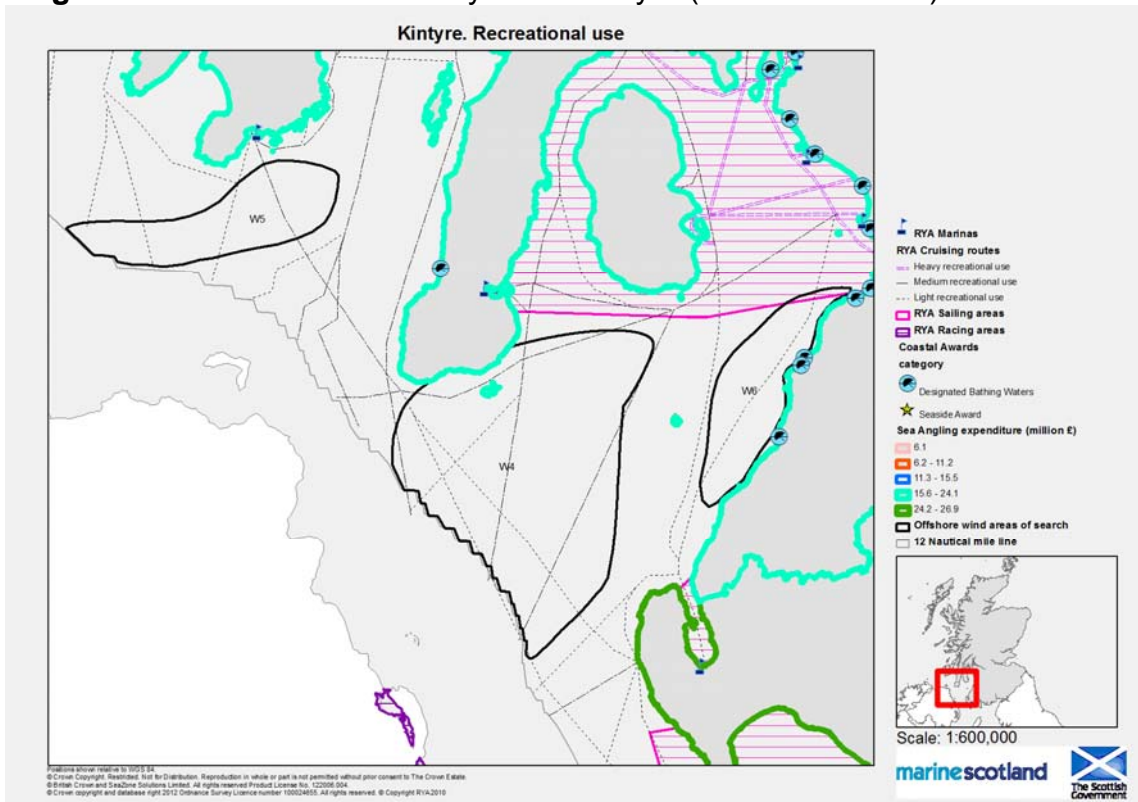


Figure 7.49 Recreational activity in the Kintyre (Areas of Search)



7.14 Shipping

- 7.14.1 The Firth of Clyde is a deep water route, which is generally unobstructed from a navigation perspective as it is a high and rocky coast with some sandy beaches on its Eastern shore. The Firth has a number of rocky islands rising steeply from deep waters which include: Arran, Sanda and Pladda on its North and West edge and Ailsa Craig in the middle of an otherwise clear channel. Traffic of all size and types (passenger, cargo, leisure and Government) navigate this area in significant quantity, either departing or arriving at local ports or as through traffic transiting to Ireland. Fishing occurs throughout the area. There are a substantial number of leisure users who sail in the Firth of Clyde, and further North into the Western Isles (GLA, 2010).
- 7.14.2 The Western Isles presents an almost uninterrupted succession of deep indentations, fronted by bold rocky cliffs and headlands forming islands, narrows and sea lochs. From a shipping perspective drying rocks and reefs are frequent, often with deep navigable waters immediately adjacent. The Mull of Kintyre to Ardnamurchan coast line is no exception exposed directly to the Atlantic Ocean and the full force of winter gales the coast is frequently obscured by low cloud and driving rain. Strong tidal streams, and eddies can be experienced in narrows and inshore making navigation difficult and unpredictable (GLA, 2010).
- 7.14.3 Further offshore, larger vessels (which remain within the Traffic Separation Scheme) transit to and from the North Channel and keep to the South West of Skerryvore before turning North to the Minch or heading Northwest for the deep water route. Smaller coastal vessels often choose to pass through the sound of Islay and to the East of Coll and Tiree. (GLA, 2010).
- 7.14.4 In addition, other ports provide important inter-island connectivity supporting both economic activity and jobs, such as Oban which is a hub for ferry traffic and supports fishing, a small numbers of general bulk cargo transhipments, fish farm support (feed and smolt) and frequent seasonal cruise vessel traffic along with a substantial number of leisure craft. Corpach handles bulk timber and quarry products while Fort William at the South end of the Caledonian Canal which sees significant leisure traffic. Throughout the area, particularly on the islands, there are a number of smaller ferry and coaster berths, fishing harbours and leisure craft moorings and marinas (GLA, 2010). A quarry terminal at Glensanda operates large bulk carriers with 130 to 270 arrivals per year.
- 7.14.5 Local life line ferries operate Kennacraig to Port Ellen and Port Askaig; Oban to Colonsay, Port Askaig, Craignure, Lismore, Coll, Tiree, Barra and South Uist; across the Sound of Mull and to Iona and Gigha. There are further council operated ferries at Corran, Lismore, Luing, Easdale, Fort William and Jura. Figure 7.50 demonstrate the complex interconnection between islands in this region, with 33 separate routes.

Ballycastle to the north. The Stranraer-Belfast ferry route is 1 nm south of W4.

7.14.12 Cargo and tanker shipping density is of the order of 14 vessel movements per week at the highest density point within W4.

7.14.13 This area of search is located directly in the route that leads to the port of the Clyde. This port receives up to 15000+ vessels per annum.

7.14.14 Area W6 straddles the Ayrshire coast between Dunure and Ballantrae and is intersected by the Troon-Belfast ferry.

7.14.15 Vessel traffic is also high in this area as W6 lies in the path of Clyde-bound vessels.

7.14.16 Further south area W7 is crossed by the routes from the ferry from Oban-Barra and Barra-Tiree.

Figure 7.51 Shipping activity in the Argyll (Area of Search)

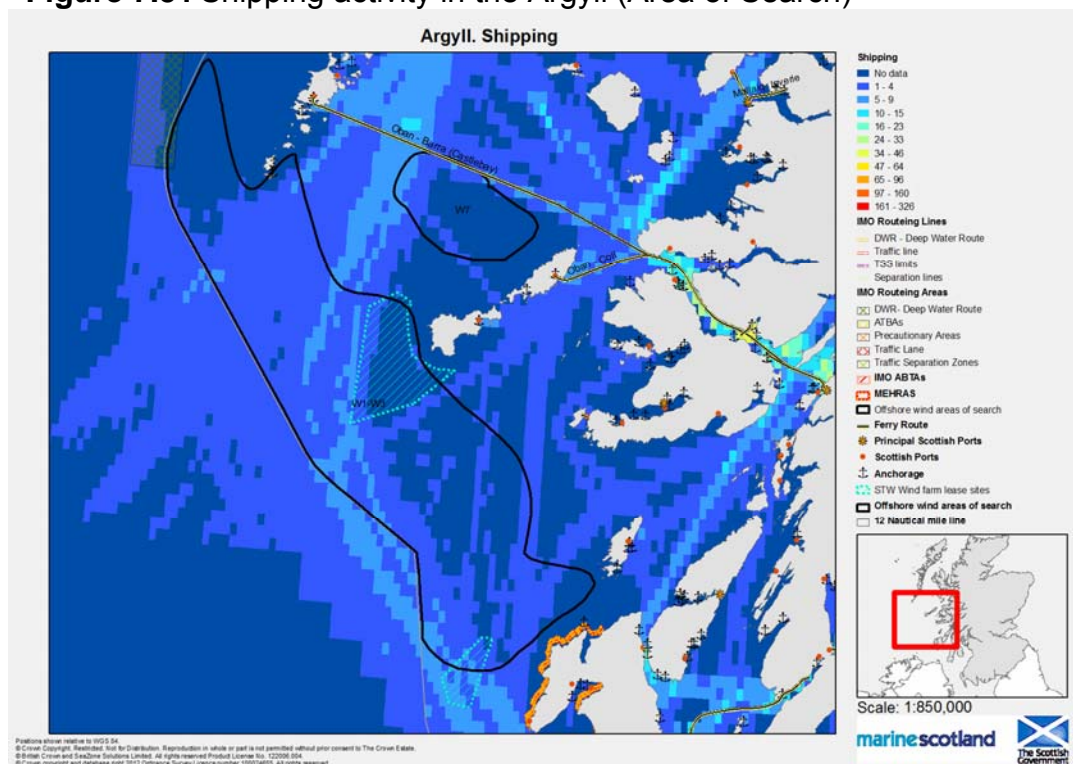
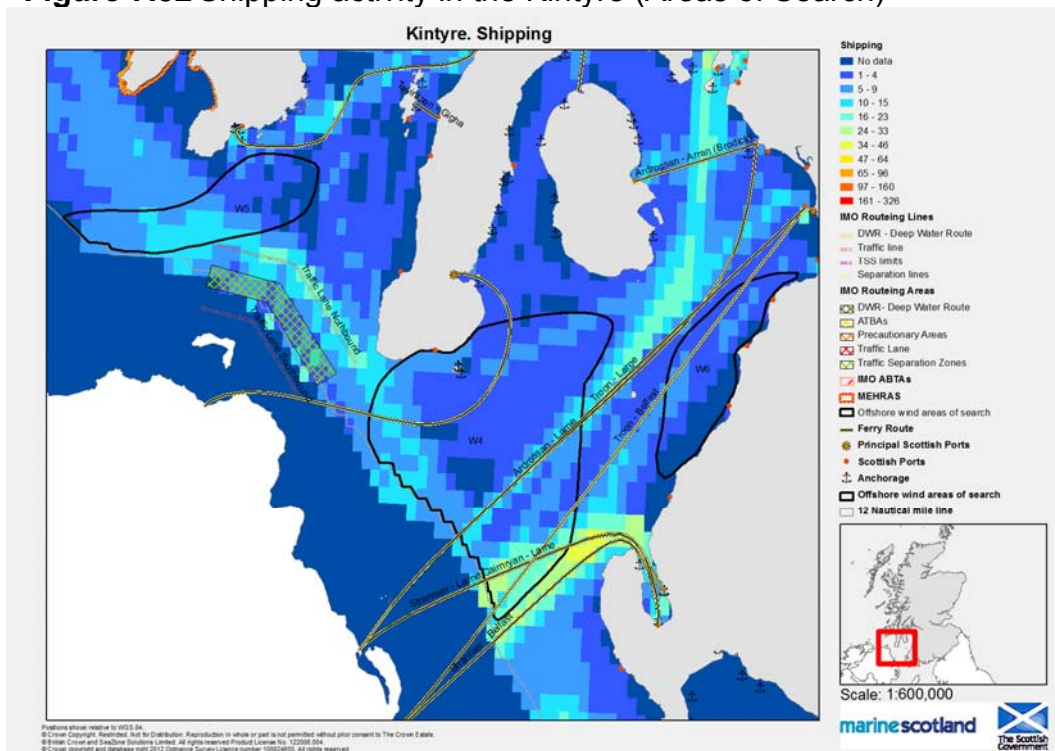


Figure 7.52 Shipping activity in the Kintyre (Areas of Search)



7.15 Social Considerations

7.15.1 The total population in West Region is 1.67 million. The population of the West is slightly greater in the 10-14 to 20-24 age bands, but is lower than the national average for ages greater than 45-59, before increasing to greater than then national average again between 60-89. The overall average age in the West Region is 39 years old (the same as the national average).

7.15.2 There has been a continual decline in the number of children in the region by 14.4%, from 265,000 in 1996 to 227,000 in 2010, and a continual increase in the number of people of pensionable age (by 5.8%, from 251,000 in 1996 to 266,000 in 2010). The number of people of working age has changed only slightly over the total period (increasing by 0.6%, from 821,000 in 1996 to 826,000 in 2010). However, the working age population has fluctuated over the period, decreasing between 1996 and 2000 and 2004 and 2008, and increasing between 2000 to 2004, and 2008 to 2010.

7.15.3 Median weekly gross income for full-time employees in the West region was £348.00 in 2001. By 2010, this had risen to £487.59, an increase of £139.59. Taking account of average inflation of 3.1% per year, this is an increase of 3.2% between 2001 and 2010. This is slightly higher than the national average (£478.39).

7.15.4 The greatest number of jobs are associated with human health and social work activities (17% of the total for 2010) and wholesale and retail trade at 15%. Other industry sectors accounting for more than 10% of jobs are in administrative and support service activities at 10%. Agriculture, forestry and fishing makes up 0.2% of all jobs, while accommodation and food

service activities account for around 7%. Jobs in arts, entertainment and recreation make up almost 3% of all jobs in the West.

- 7.15.5 Crofting is an important part of some communities in the West Region, with crofting taking part in Argyll, Bute and Tiree. There are 534 crofts in Argyll and Bute with 18,425 households in crofting communities. Tiree has 275 crofts with 399 households. Crofting makes up similar proportions of overall income and income from crofting activities; 34.5% and £7,110 in Argyll and Bute, 34.83% and £7,500 in Tiree.
- 7.15.6 The local authority with the highest population that rated their health as good or very good was Argyll and Bute (89.4% in 2001/2002 increasing to 90.4% in 2007/2008). The lowest proportion of the population rating their health as good or very good was in Glasgow City (80.2% in 2001/2002 and 83.6% in 2007/2008).
- 7.15.7 There are 241 SIMD coastal datazones in the West Region (14% of all datazones). The coastal zones are less likely to be in the 10% most deprived for education, skills and training (7% compared with 11%), employment (11% compared with 14%), income (11% compared with 15%) and housing (9% compared with 16%). Coastal datazones are also less likely to be in the 10% most affluent datazones for these key indicators, and for health. The average ranking for coastal datazones is higher for four of the five indicators suggesting coastal datazones are more affluent overall, but is slightly lower for housing. The data show that coastal datazones are more likely to be deprived than affluent overall, and across the individual indicators in the West. Overall, the average ranking of coastal datazones suggests that they are less deprived than non-coastal datazones. This indicates that there are some coastal datazones that are much more deprived.
- 7.15.8 In terms of the population with no qualifications, the range is between 8.1% and 22% in 2004, and between 7.6% and 21% in 2010, showing very little overall change. The area with the highest proportion of the population with no qualifications is Glasgow City in both 2004 and 2010. The areas offering the greatest proportion of job-related training in 2004 were inland local authorities such as East Dunbartonshire and East Ayrshire in 2010. The area offering the lowest rates of job-related training in 2010 was Argyll and Bute.
- 7.15.9 The minimum drive time to a college of Further or Higher Education in the West Region is an average of 13.4 minutes (Argyll and Bute). This is considerably shorter than the average for the West as a whole (88 minutes) and significantly less than the maximum of 100 minutes in Glasgow City, Inverclyde, and Renfrewshire amongst other local authority areas).
- 7.15.10 House prices vary considerably between local authorities in the West Region. Two coastal local authorities have mean house sale prices that are greater than the national average (Argyll and Bute and South Ayrshire). North Ayrshire has some of the lowest mean house sale prices. Prices are also lower than the national average in Renfrewshire, Inverclyde and Glasgow City. The variation in mean house prices makes it difficult to

compare house prices and average earnings, although North Ayrshire was recorded as having the second lowest percentage of disposable income spent on mortgage payments in the UK in 2011 at 17.8%. Of the ten most affordable local areas in Scotland, six are in the West Region, including the coastal local authorities of North Ayrshire, Inverclyde and South Ayrshire. For first-time buyers, the West Region is one of the areas with the lowest average age and lowest house price to earnings ratio. The lowest house price to earnings ratios in were in North Ayrshire (2.8) and South Ayrshire and Inverclyde (2.9).

7.15.11 When asked to rate the perception of their neighbourhood, the highest proportion rating it as good or very good in 2007/2008 was in Argyll and Bute (72.5%) and the lowest in Glasgow City (35.9%). The change across nine of the eleven local authorities in the West Region has been an increase. The largest overall increase is in Argyll and Bute (+16.7% between 1999/2000 and 2007/2008). Considering other coastal authorities, smaller increases have been seen in Renfrewshire (+4.1%), Inverclyde (+3.5%) and Glasgow City (1.7%). East Ayrshire showed a reduction (-0.4%) in the perception of neighbourhood as being very good or good between 1999/2000 and 2007/2008.

7.15.12 The average electricity consumption (per household) in the West Region was 5.0 MWh in 2009 (compared with an overall estimated average per household for Scotland of 5.7 MWh). A reduction in MWh consumed per household was seen in all local authorities, although the change is small. Those households where the highest income (HIH) earner is 60+ are more likely to be in fuel poverty than the whole population in 2007/2009. At 41.1%, this is lower than the national average of 45.9% for this group. The percentage of HIH 60+ in fuel poverty has also increased over time. There is considerable variation across the region, with the highest percentage of HIH 60+ being in fuel poverty at 56% (Argyll and Bute) and the lowest being 31.8% (West Dunbartonshire). However Argyll and Bute does show an overall decrease of 1.6%.

Future Trends

7.15.13 Table 7.5 summarises the statistics and trends discussed above to give an indication of the likely future changes by indicator, comparing national with local trends (where data are available). There is much greater uncertainty over trends for the time period of 30 to 50 years and, in both cases, it is assumed that future trends follow recent and historic trends. .

Table.7.5 Summary of future trends in West Region

Indicator	National		Regional		Evidence for Trend
	10-20 years	30-50 years	10-20 years	30-50 years	
Average age	↑	↑	↑	→	Estimate of proportion of the population that is of pensionable age between 2001 and 2010, change may be small for this region
Working age population	↑	→	→	→	Recent trends suggest no real change in the number of people of working age
Income	↑	↑	↑	↑	Recent trends suggest increase in median weekly income over time
Health	↑	→	↑	↑	Recent trends suggest increase in perception of health
Perception that neighbourhood is a very good place to live	↓	↓	↑	↑	Regional trends suggest increase in 9 of 11 local authorities
Affordability of housing	↑	→	↑	→	Suggestion that affordability has increased recently, but this may not be sustained. Large variability across the region, although the West Region includes some of the most affordable housing in the UK
Housing quality	↑	↑	↑	↑	Housing quality, as measured by percentage of housing failing the SHQS, is improving, although the definition used in the standard has changed over time, making this difficult to confirm
Energy consumption	↓	↓	↓	→	Recent trends suggest potential for continued slight decline, in longer term is more uncertain
Fuel poverty	↑	→	↑	→	Recent trends show an overall increase even though the Scottish Government policy is that there should be no fuel poverty in the medium to long-term. Disability and long-term sick has shown small decrease
Key: ↑: indication of upward trend expected ↓: indication of downward trend →: no significant change up or down expected ↕: uncertain trend could be up or down					

7.16 Supply chain

7.16.1 In the West Region, there are 2 sites identified by N-RIP as suitable for offshore wind manufacturing:

- Hunterston, Firth of Clyde; and
- Campbeltown/Machrihanish, Kintyre Peninsula, Argyll.

- 7.16.2 Hunterston has a deep water jetty for handling bulk cargo, coal storage area with rail sidings, and a 37 hectare (91 acre) marine construction yard including a large dry dock. Envisaged future capacity will include construction of a new deep water quay with backfill to create a building platform, capable of supporting large scale industrial structures developed on a bespoke basis. There is also a planned offshore turbine test centre at Hunterston, testing devices in the 6-10.5 MW+ range.
- 7.16.3 The Machrihanish site, in conjunction with the nearby Campbeltown Harbour, is suitable for large scale manufacturing, fabrication and construction in the renewable energy sector. The Campbeltown Harbour site is undergoing improvements, including the construction of a new deep water quay/new open piled pier, and increasing the dredge level from 5 to 9m with committed completion by December 2012.
- 7.16.4 These priority sites can be supported by the following other sites in the West Region, offering potential for Operations and Maintenance, logistical support services and supply chain manufacturing:
- Barcaldine, Oban, Argyll;
 - Ayr, Ayrshire*;
 - Inchgreen*, Inverclyde; and
 - Troon, Ayrshire*.
- *N-RIP Phase 2 Ports
- 7.16.5 The West Region contains supply chain companies involved in the engineering of major components for offshore wind structures, supplies for gravity base foundations, vessel service and maintenance and wind turbine operations and maintenance. Further information can be found at www.sdi.co.uk
- 7.16.6 In terms of educational facilities, the West Coast of Scotland is home to the University of Strathclyde. The University's Institute for Energy and Environment is one of the largest electrical power engineering and energy technology university research groups in Europe. It is also home to the UK's only Wind Energy Doctoral Training Centre, providing high calibre PhD graduates with the specialist skills required by the wind energy industry. The Department of Naval Architecture and Marine Engineering also provides marine technology expertise, and offers specialist BEng and MEng degrees.
- 7.16.7 The University of Glasgow School of Engineering brings together the expertise of the Departments of Aerospace Engineering, Civil Engineering, Electronics and Electrical Engineering and Mechanical Engineering, with wind tunnel testing facilities and expertise in aerospace R&D and fluid mechanics. Courses relating to the development of offshore renewable energy are also provided by the Glasgow Caledonian University and the University of the West of Scotland.

- 7.16.8 In addition, there are a range of courses provided by a number of colleges in the West Region in related offshore energy disciplines including fabrication, welding and inspection, engineering systems, construction management and maritime skills.
- 7.16.9 Further information on all of the above supply chain activities is available in *Scottish Offshore Renewables Development Sites: West Coast Cluster* Scottish Development International (www.sdi.co.uk).

Argyll and Bute Council

- 7.16.10 There is a strong ambition in Argyll and Bute to create the environment for a substantial business sector to service offshore wind – encouraging business growth in areas of strengths, such as manufacturing and marine services, benefitting sustainable economic growth for Argyll and Bute.
- 7.16.11 The ‘Lorn Arc’ project is an ambitious £20 million proposal to extend Oban’s North Pier and construct road infrastructure in Dunbeg/Dunstaffnage. The proposal covers Oban, Dunstaffnage, Dunbeg, North Connel and Barcaldine. Argyll and Bute Council has been given approval by the Scottish Government to develop the proposal under the Tax Incremental Finance (TIF) scheme.
- 7.16.12 These proposals intend to stimulate private sector investment across the Lorn area: the North Pier extension will be a catalyst for the growth of the renewables industry, marine tourism (including cruise ship market) and aquaculture; the road infrastructure will allow development of industries relating to the improved harbour facilities and other key investments at Dunbeg/Dunstaffnage, such as the European Marine Science Park.

Glasgow City Council

- 7.16.13 Glasgow has significant experience of large scale nautical engineering and manufacturing due the history of shipbuilding within the City and broader region. In relation to offshore wind energy, three major developers, SSE, ScottishPower Renewables and Gamesa have based their Centres of Excellence in Glasgow. SSE’s Centre also houses Mitsubishi, Siemens and Atkins. A number of the other firms working within renewable energy and engineering are also based or have offices in Glasgow.
- 7.16.14 SSE, Scottish Power and Weir have launched a collaborative research programme with the University of Strathclyde, and the University of Strathclyde is building an £89million Technology and Innovation Centre.

Renfrewshire Council

- 7.16.15 The centre of the Council's involvement with offshore wind energy is, in this respect, Westway Industrial and Business Park, Renfrew. Here there is a dock facility, shortly to be upgraded, that has been, and will be, used by engineering companies located in the Park, notably Steel Engineering.

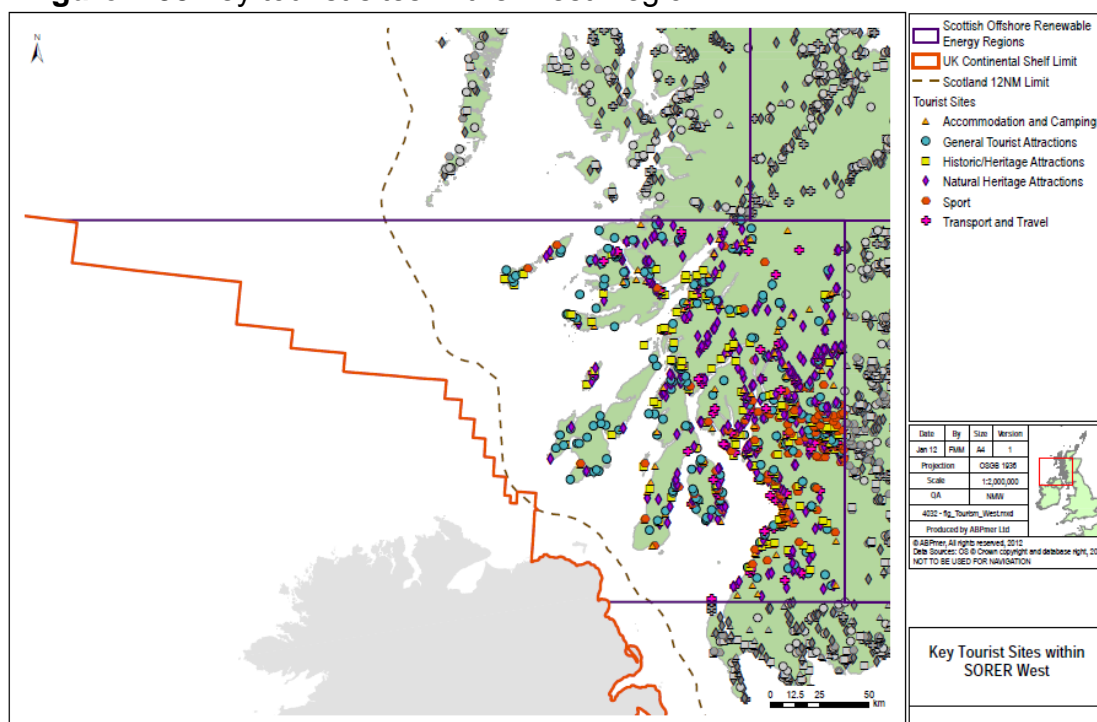
Following a successful trial, last year, by Steel Engineering, plans to refurbish the dock and improve navigability along the Cart, are well advanced, thereby allowing easy access to offshore sites along the West Coast of Scotland and beyond.

7.16.16 Westway lies approximately 7 miles west of Glasgow City Centre, close to Glasgow airport, on the east bank of the White Cart. It currently provides approximately 130,000 m². of industrial and business space with the construction of a further 34,000 m² of space at Masterplan stage. The main occupier, Steel Engineering, is committed to renewables, including offshore wind, wave and tidal power.

7.17 Tourism

7.17.1 The West Region has a range of tourism sites, with historic / heritage attractions scattered throughout the region. (See Figure 7.53)

Figure 7.53 Key tourist sites in the West Region



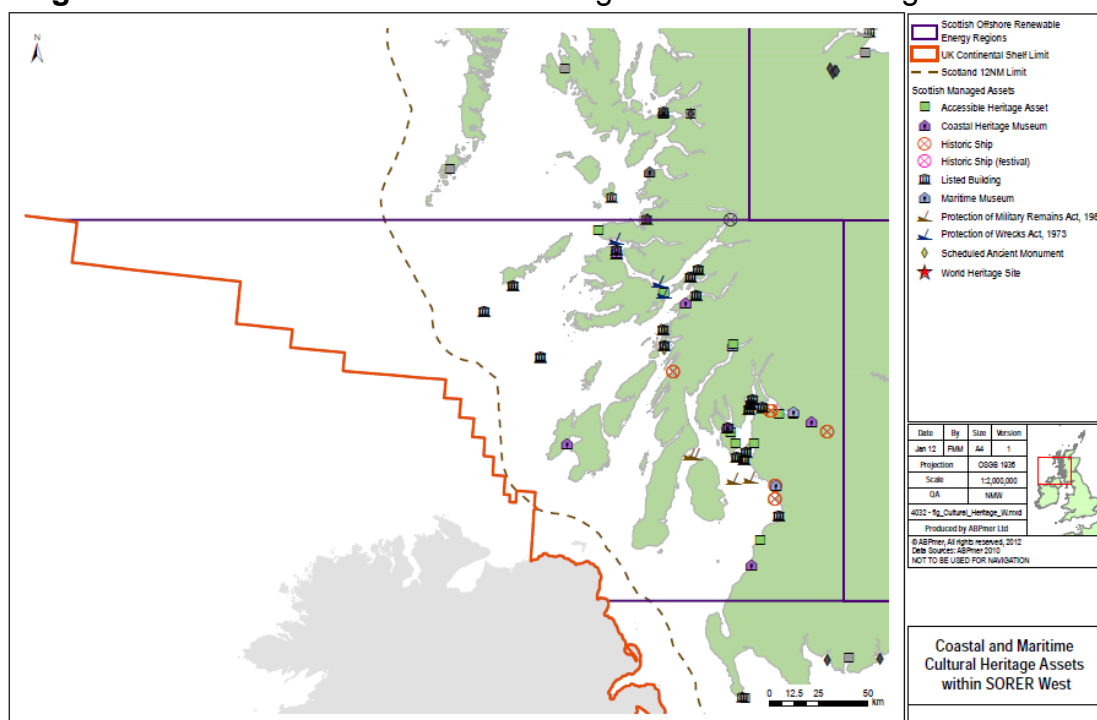
7.17.2 The Island of Coll in the Inner Hebrides has been established as a basking shark hotspot (Speedie et al, 2009), whilst the Isle of Mull was the first to establish cetacean watching in 1989 and is the location of the Hebridean Whale and Dolphin Trust Visitors Centre. It is of note that wildlife tourism has increased, even in times of recession (Scottish Government, 2010).

7.17.3 Marine and coastal tourism in particular is very important for Argyll and the Isles and this region has valuable marine and coastal resources. There are 6 Marine Special Areas of Conservation, which are protected under the EU Habitats Directive. These areas cover reefs, saltmarsh and mudflats and

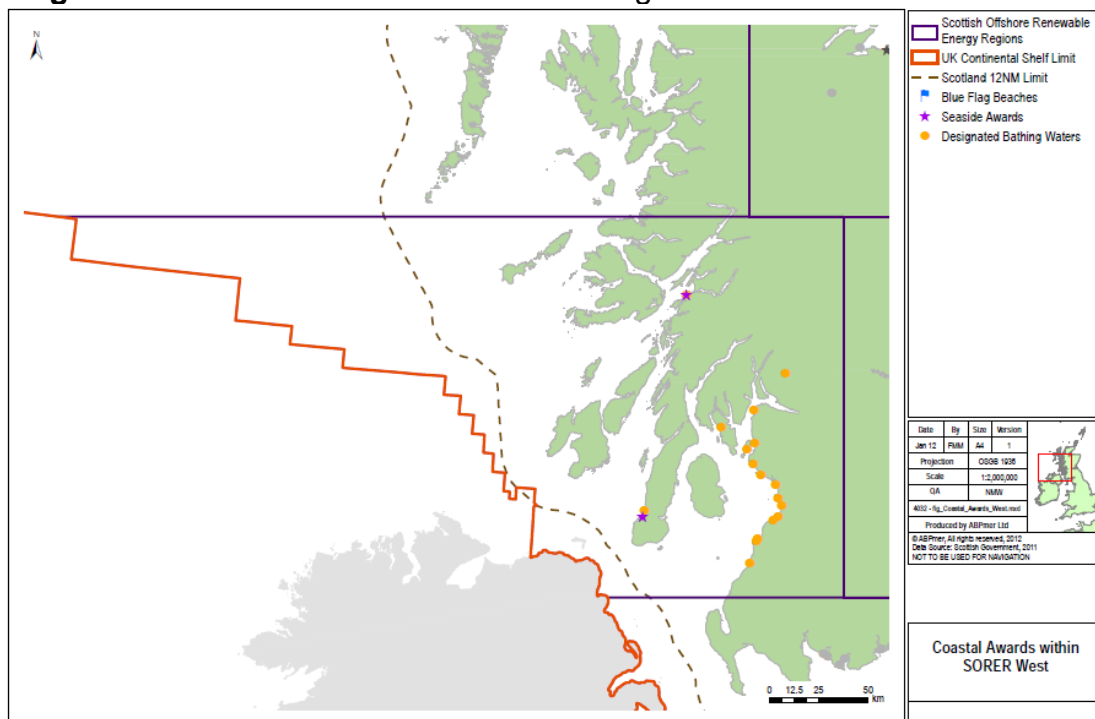
seal hotspots (Benfield and McConnell, 2007). A survey found that the main reasons for visiting the area were scenery (89%) and wildlife (56%), with 73% of people expressing that the marine and coastal environment had been a very important factor when choosing to visit the area (Benfield and McConnell, 2007). The most popular marine and coastal activity in this area was coastal walks, followed by beach visits and wildlife watching boat trips; all three of these activities have the potential to be affected by offshore renewables projects. The most popular areas visited were Oban, followed by Mull, Tiree, Coll and Staffa (Benfield and McConnell, 2007).

7.17.4 Many tourism sites are located in coastal areas, for example, around the coastline of the Isle of Arran. There are also a considerable number of historic/heritage attractions along the coast near Oban. Indeed, Figure 7.54 indicates that the region has many coastal listed buildings, as well as several historic ships and locations designated under the Protection of Military Remains Act and the Protection of Wrecks Act.

Figure 7.54 Cultural and Maritime Heritage Assets in West Region



7.17.5 West Scotland also has a number of designated bathing waters along the West coast of the Firth of Clyde (see Figure 7.55). Other locations with this designation include Machrihanish and Ganavan Sands (both Argyll and Bute), which additionally have seaside awards. Estimates of the numbers visiting the region can be based on information from Visit Scotland.

Figure 7.55 Coastal awards in the West Region

7.17.6 Data from VisitScotland for 2009 indicate that:

- UK residents made 2.13 million trips to Greater Glasgow and Clyde, staying for 6.06 million nights and spending £4689 million. For the same year, overseas visitors made approximately 0.78 million trips, stayed for 5.08 million nights and spent around £222 million;
- UK residents made around 0.89 million trips, stayed 3.1 million nights and spent around £155 million in Ayrshire and Arran. In the same year, overseas visitors made approximately 130,000 trips, stayed for 780,000 nights and spent £46 million (VisitScotland, 2010); and
- UK residents made around 1.57 million trips, stayed for 6.0 million nights and spent around £325 million in Argyll, Loch Lomond, Stirling and Forth Valley. Overseas visitors made around 290,000 trips, stayed for 1.26 million nights and spent around £325 million.

7.17.7 The West Region is therefore important for both UK and international tourism. Given the number of attractions along the coast, much of this tourism is likely to be related to marine and coastal areas.

7.17.8 For employment, Benfield and McConnell (2007) give figures of 17,902 people employed in tourism related jobs in the Argyll and Islets region, whilst 334 people had jobs specifically related to the marine and coastal sector (these figures were from 2001, and must be taken as indicative only). Given upwards trends, these figures may now be higher.