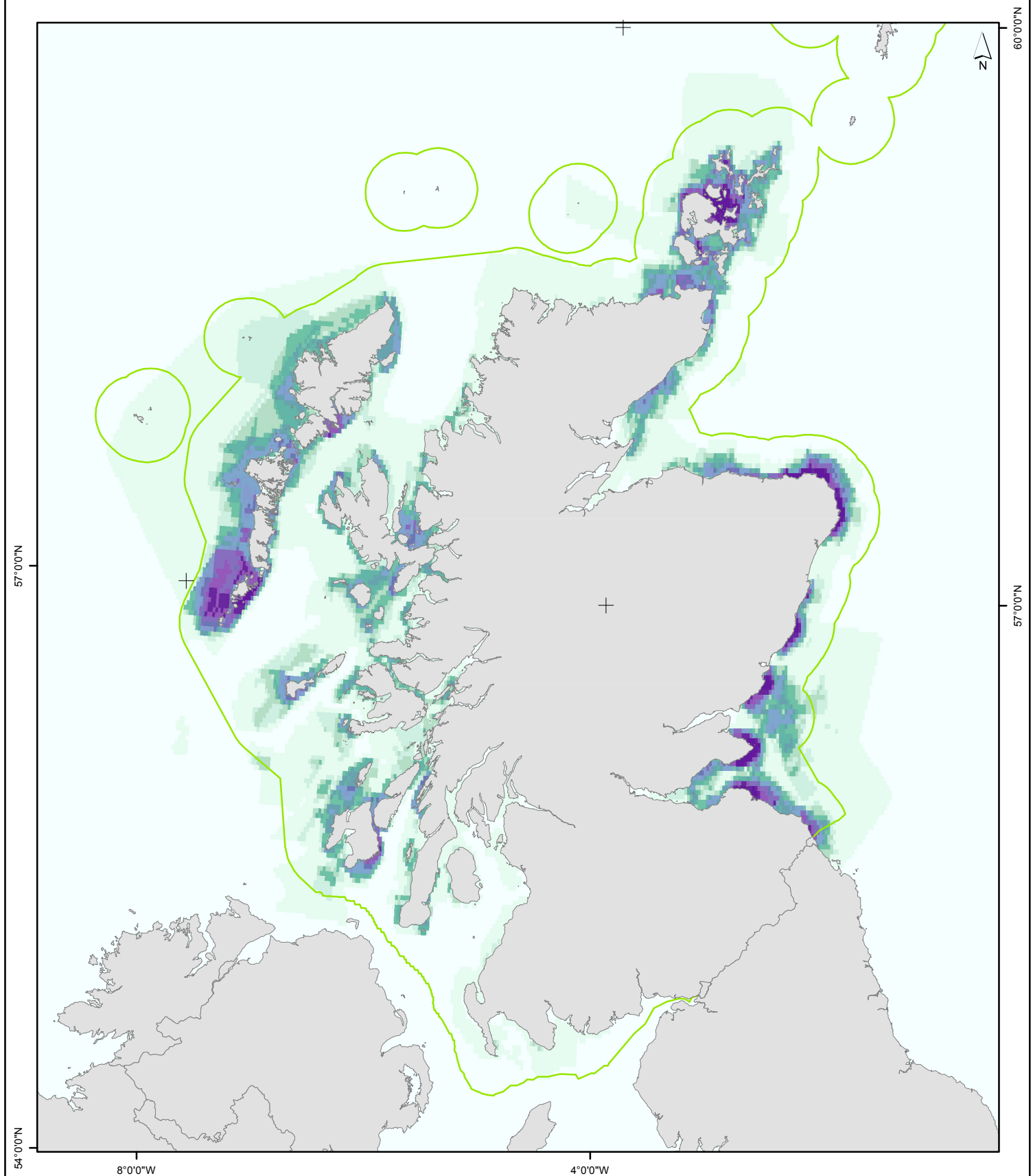


ScotMap - Crab & Lobster Pots - Number of Vessels



<p>United Kingdom</p> <p>12 Nautical Miles Limit</p> <p>Number of Vessels / cell</p> <p>1 3 4 5 6 7 8 9 10 11 12 13 14-15 16-17 18-21 22-45</p>		<div> <div>0 30 60 120 Km</div> <div> <div>1:3,000,000</div> <div>Size : A4</div> </div> <div> <div>Author:</div> <div>Andronikos Kafas</div> </div> <div> <div>Science Project Manager:</div> <div>Anne McLay</div> </div> <div> <div>Version 4.0</div> <div>24/07/2013</div> </div> </div> <p>Number of Interviews: 1090; Number of Polygons: 2634; Classification scheme: Quantile 15 classes. Positions shown relative to British National Grid.</p> <p>© British Crown and SeaZone Solutions Limited. All rights reserved Product Licence No. 122006.004.</p> <p>© Crown copyright and database rights 2009 Ordnance Survey 100024655. You are not permitted to copy, sub-license, distribute or sell any of this data to third parties in any form.</p> <div> <div> <div>Marine Laboratory</div> <div>PO Box 101,</div> <div>375 Victoria Road,</div> <div>Aberdeen, AB11 9DB</div> <div>+44(0) 1224 876544</div> <div>www.scotland.gov.uk/marinescotland</div> </div> <div> <div>marinescotland</div> <div>science</div> </div> <div> </div> </div>
--	--	--