



# Short-Term Behavioural Responses of Wintering Waterbirds to Marine Activity: Appendix 1

Scottish Marine and Freshwater Science Vol 9 No 7

D Jarrett, A S C P Cook, I Woodward, K Ross, C Horswill, D Dadam and E M Humphreys



## **Appendix 1**

### **Bathymetry Maps for VP Sites**

**BTO Research Report No. 695**

**Quantifying the Sensitivity of Waterbird Species  
during the Non-Breeding Season to  
Marine Activities in Orkney and the Western Isles**

Authors

**Kathryn E Ross, Aonghais S C P Cook, Daria Dadam, Catharine Horswill &  
Elizabeth M Humphreys**

Report of work carried out by the British Trust for Ornithology  
on behalf of the Marine Scotland Science

February 2017



## GURNESS

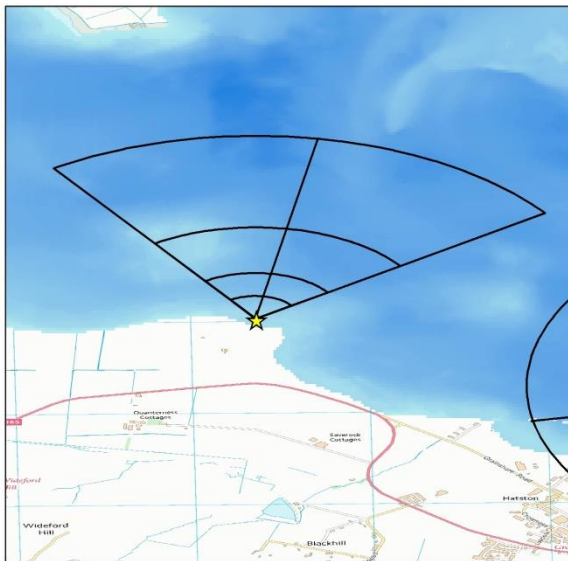
### Bathymetry (m)



Bathymetry data:  
© Crown Copyright, 2017. All rights reserved.  
License No. EK001-20140401.  
Not to be used for Navigation.

Background map:  
Contains Ordnance Survey data  
© Crown copyright and database right (2017)

**Figure A1.1:** Bathymetry data for Broach of Gurness VP



## QUANTERNESS

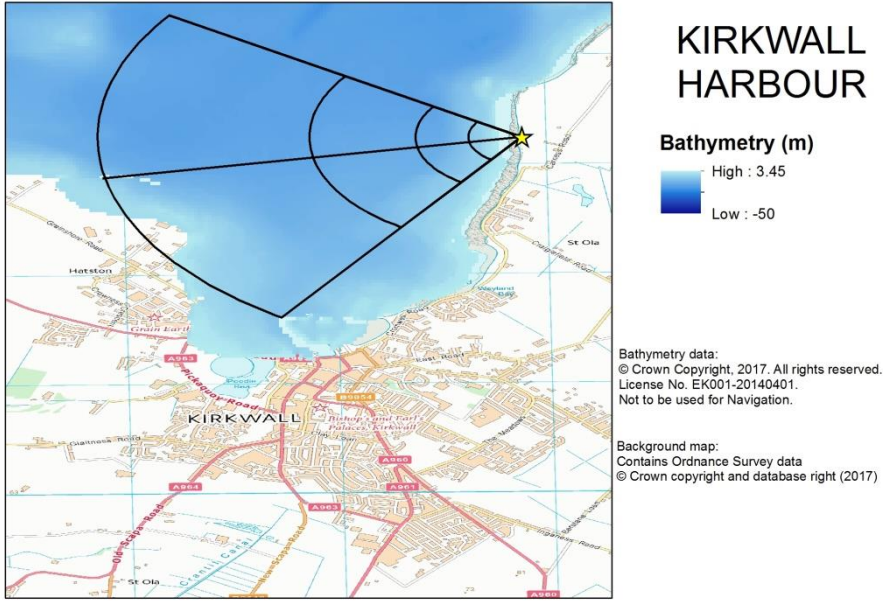
### Bathymetry (m)



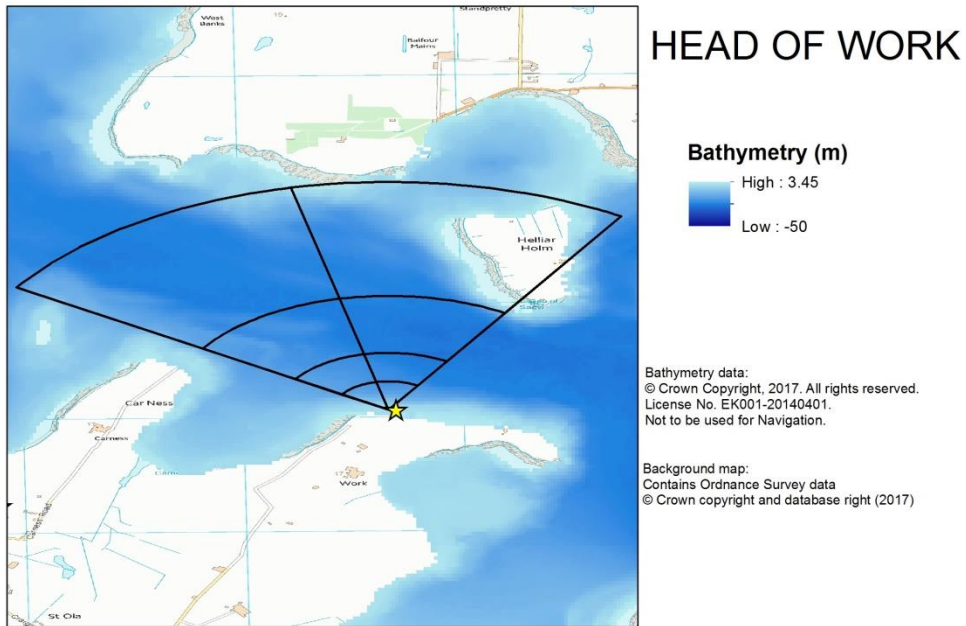
Bathymetry data:  
© Crown Copyright, 2017. All rights reserved.  
License No. EK001-20140401.  
Not to be used for Navigation.

Background map:  
Contains Ordnance Survey data  
© Crown copyright and database right (2017)

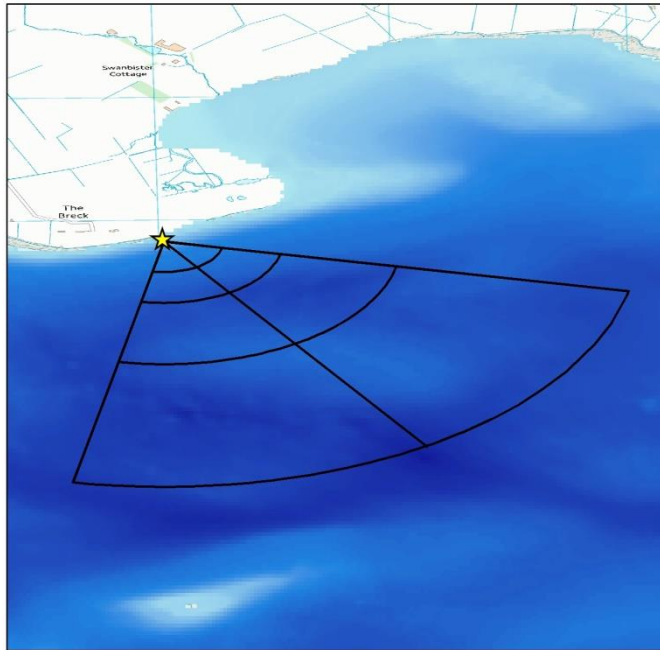
**Figure A1.2:** Bathymetry data for Quanterness VP



**Figure A1.3:** Bathymetry data for Bay of Kirkwall VP



**Figure A1.4:** Bathymetry data for Head of Work VP



## THE BRECK

### Bathymetry (m)



Bathymetry data:  
© Crown Copyright, 2017. All rights reserved.  
License No. EK001-20140401.  
Not to be used for Navigation.

Background map:  
Contains Ordnance Survey data  
© Crown copyright and database right (2017)

Figure A1.5: Bathymetry data for The Breck VP



## HOUTON

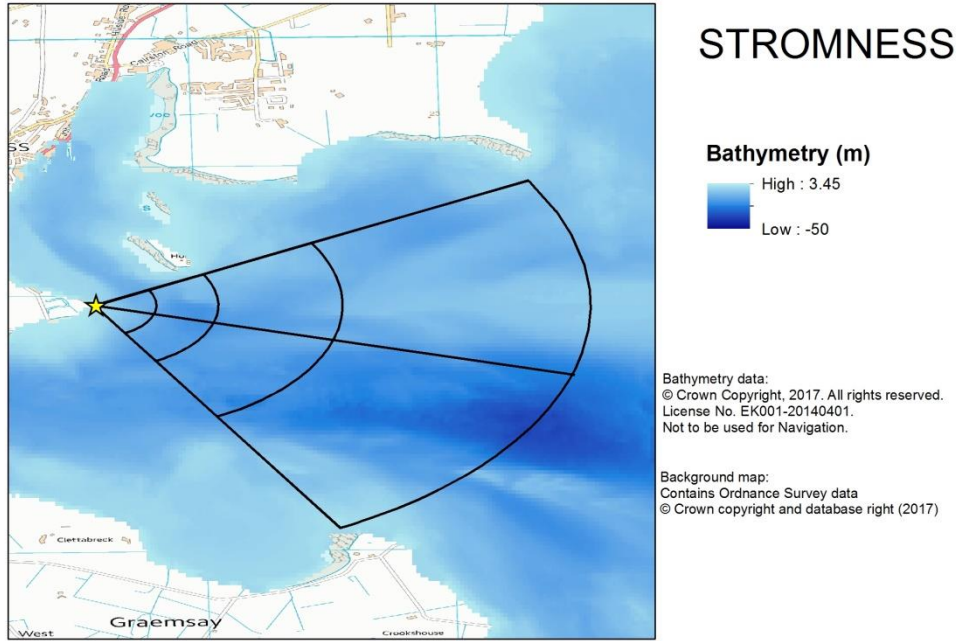
### Bathymetry (m)



Bathymetry data:  
© Crown Copyright, 2017. All rights reserved.  
License No. EK001-20140401.  
Not to be used for Navigation.

Background map:  
Contains Ordnance Survey data  
© Crown copyright and database right (2017)

Figure A1.6: Bathymetry data for Houton VP



**Figure A1.7:** Bathymetry data for Stromness VP